

Applicator Unit, Moving

Part Number/Price

REF #	PART #	DESCRIPTION	QTY	SYNONYM	PRICE
1	103224	Cushion, applicator	1	103-3787-13	\$27.50
2	Consult	Cover, arm, harness	1	078-0763-29	\$6.00
3	Consult	Bracket, fan	1	103-3872-17	\$79.00
4	Consult	Shaft, joint	4	078-0786-15	\$4.00
5	Consult	Spring, coil, compressive	2	068-5127-10	\$4.00
6	Consult	Masking plate, Z, lower	1	078-0638-17	\$6.00
7	Consult	Block B, slide, applicator	1	077-4983-29	\$4.00
8	Consult	Bracket arm	1	078-0787-46	\$69.00
9	Consult	Threaded rod, round, FF	2	078-0639-11	\$7.00
10	Consult	Spring, coil, compressive	2	075-1084-07	\$4.00
11	Consult	Cover, applicator, Z	1	095-4278-01	\$25.00
12	116275	Bracket, sensor	1	078-0753-12	\$27.50
13	103223	Sheet	1	066-1916-03	\$5.50
14	172616	Bearing radial, deep groove	2	057-0387-08	\$34.00
15	Consult	Timing pulley, XL	1	059-8296-42	\$28.00
16	195586	Timing pulley, XL	1	059-8460-10	\$21.00
17	157889	Timing belt, XL, rotation, white	1	078-0759-05	\$8.00
18	Consult	Bracket rotation, lower	1	077-4777-19	\$41.00
19	116276	Spacer, fan	1	078-0635-16	\$1.50
20	Consult	Bracket, rotation, upper	1	077-4778-21	\$24.00
21	172615	Bearing unit, linear, rolling	1	072-5427-21	\$365.50
22	Consult	Block B, holder, Z	1	077-4982-07	\$11.00
23	Consult	Shaft, slide	1	075-1082-00	\$27.00
24	48206	Bearing, linear bush, 121-5347-00	1	028-1516-05	\$32.00
25	Consult	Holder, belt	1	077-4780-39	\$8.00
26	Consult	L plate B, sensor, Z	1	078-0631-11	\$7.00
27	45229	Timing pulley, XL, AF	1	041-1527-03	\$13.00
28	117784	Timing belt, XL, up/down, white	1	030-8488-01	\$12.00
29	172572	Bearing, radial, deep groove	8	094-2650-00	\$5.50
30	Consult	Bearing, radial	3	000-3622-08	\$13.00
31	157890	Timing belt, XL, front/back, white		021-3286-05	\$13.50
32	Consult	Shaft, slide	2	077-4775-30	\$22.00
33	172609	Bearing, linear bush	2	069-4928-01	\$40.50
34	173743	Holder, belt	3	068-5090-25	\$2.50
35	173746	Holder, belt Y	1	078-0756-13	\$10.00
36	Consult	L plate A, detect plate, Y	1	077-4779-16	\$6.00
37	Consult	Housing, linear, Y	2	077-4981-03	\$38.00
38	Consult	Shaft, linear	2	077-4773-14	\$41.00
39	Consult	Detect plate, rotation, lower	1	078-0632-15	\$4.00
40	Consult	Detect plate, rotation, upper	1	078-0633-19	\$4.00
41	Consult	L plate B, stopper	1	078-0764-22	\$6.00
42	Consult	Cover, applicator, Z	1	103-3871-13	\$101.00
43	Consult	Housing, linear, X	1	077-4984-04	\$31.00
44	157900	Bearing, linear bush	4	069-4929-04	\$25.50
45	Consult	Timing pulley, XL, BF	1	076-1831-00	\$21.00
46	Consult	Shaft, bearing	3	078-0629-13	\$8.00

X-axis - right/left, Y-axis - front/back, Z-axis - up/down

Price and availability confirmation recommended

An ISO 9001 Registered Company ©2022 Rice Lake Weighing Systems 1/22 Prices and specifications subject to change without notice. Visit ricelake.com for current prices.

RICE LAKE
WEIGHING SYSTEMS

Discontinued Products

Applicator Unit, Moving

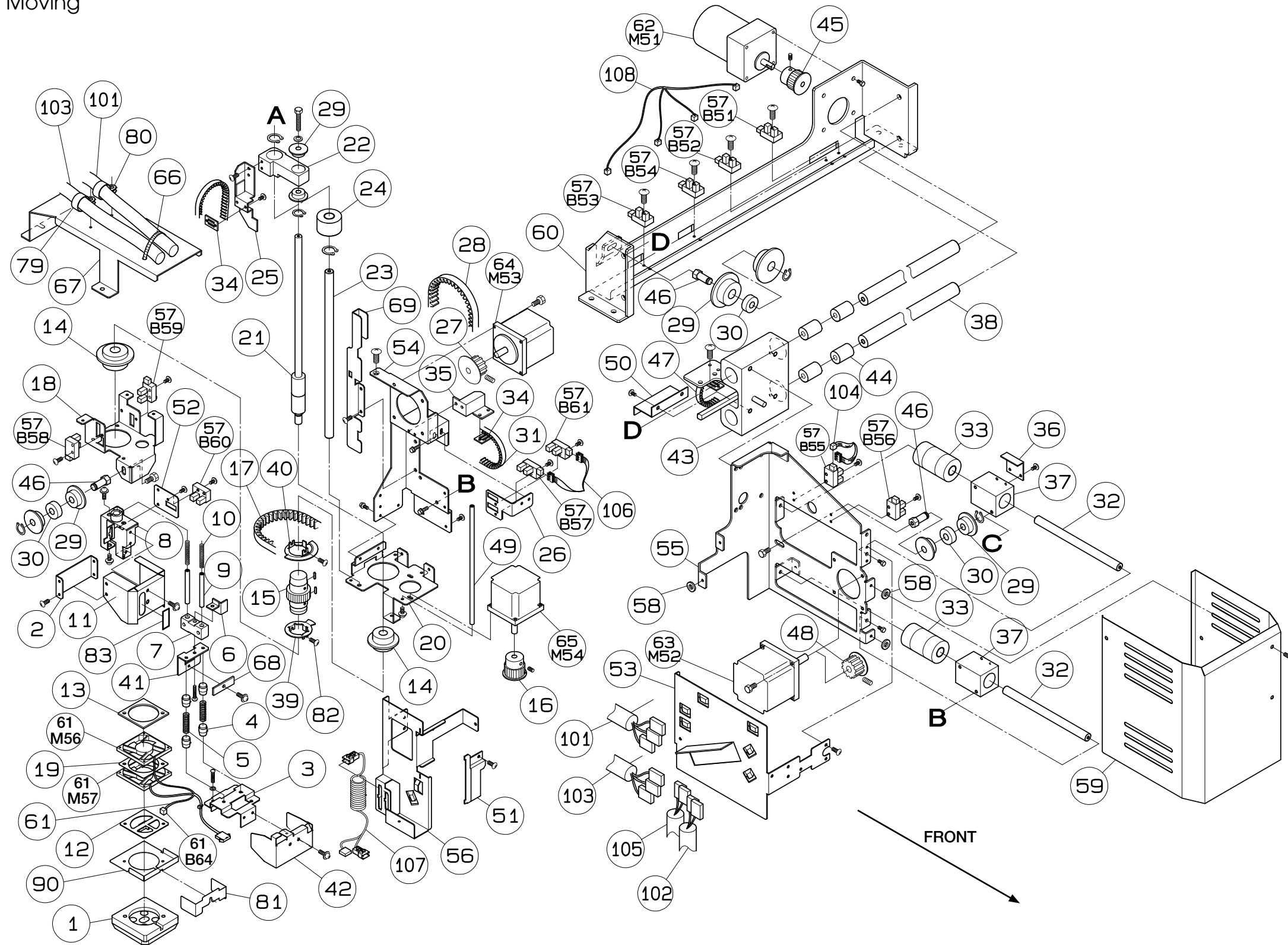
Part Number/Price

REF #	PART #	DESCRIPTION	QTY	SYNONYM	PRICE
47	173747	Timing belt XL, right/left, black	1	078-0765-08	\$12.00
48	Consult	Timing pulley, XL, AF	1	077-4980-19	\$11.00
49	Consult	Threaded rod, round, FF	1	077-4774-09	\$8.00
50	Consult	Crank plate A, baffle plate	1	078-0634-12	\$10.00
51	Consult	Cover, harness	1	078-0640-15	\$18.00
52	Consult	Plate B, sensor	1	078-0630-18	\$5.00
53	Consult	Cover, harness	1	078-0641-19	\$25.00
54	Consult	Bracket, applicator, Y	1	078-0642-31	\$38.00
55	Consult	Bracket, applicator, X	1	078-0809-44	\$62.00
56	Consult	Cover, harness, Y	1	078-0643-25	\$33.00
57	104239	Photo interrupter, transmitter, white conn. (B51~B61)	11	070-5204-14	\$10.00
58	Consult	Sheet	4	075-1075-12	\$4.00
59	Consult	Cover, applicator	1	078-0755-56	\$45.00
60	Consult	Bracket, applicator, X	1	077-4993-35	\$62.00
61	103221	Fan assy, suction (includes fans M56, M57 and sensor B64)	1	094-0414-28	\$148.50
62	162098	Motor assy, stepping, X (M51)	1	079-3002-08	\$208.50
63	162099	Motor assy, stepping, Y (M52)	1	079-3003-11	\$82.00
64	162100	Motor assy, stepping, Z (M53)	1	077-0000-14	\$98.50
65	162101	Motor assy, stepping, rotation (M54)	1	079-3001-04	\$71.00
66	Consult	Accessory, band, fastener	12	000-1842-03	\$2.00
67	Consult	Bracket, wiring, applicator	1	077-4776-06	\$18.00
68	174464	Insulator	1	075-1077-01	\$4.50
69	Consult	Cover, harness	1	078-0808-41	\$12.00
79	Consult	Accessory, clamp, nylon clamp	1	022-7032-08	\$1.00
80	Consult	Accessory, clamp, nylon clamp	1	034-0238-06	\$1.00
81	157901	Tape, sponge side	1	091-2126-02	\$12.00
82	Consult	Screw, plus bind, P3	4	091-2374-00	\$1.00
83	Consult	Tape, magic	1	095-4440-09	\$5.00
90	Consult	Bracket, fan	1	103-3870-10	\$65.00
101	Consult	Harness, C6, motor work X (P-916 to M52, harness 102)	1	079-3007-24	\$90.00
102	Consult	Harness, C4, motor work Y (harness 101 to M53, M54)	1	079-3008-28	\$74.00
103	Consult	Harness, C8, sensor work X (P-916 to harnesses 104, 105)	1	079-3009-21	\$82.00
104	Consult	Harness, C3, sensor Y (harness 103 to B55, B56)	1	079-3006-11	\$10.00
105	157902	Harness, C4, sensor work Y (harness 103 to harnesses 107, 106)	1	079-3010-26	\$78.50
106	157903	Harness, C5, sensor Z rotation (harness 105 to B57, B58, B59, B61)	1	079-3004-32	\$17.50
107	114160	Harness, C3, sensor work Z, coiled cable (harness 105 to B60, assy 61)	1	079-1443-28	\$107.00
108	Consult	Harness, C6, sensor X (P-916 to B51, B52, B53, B54)	1	079-3005-18	\$21.00

X-axis - right/left, Y-axis - front/back, Z-axis - up/down

Ishida WM-4000

Applicator Unit, Moving



- B51 - Right/left (X-axis), right position
- B52 - Right/left (X-axis), printer #1 pickup position
- B53 - Right/left (X-axis), printer #2 pickup position
- B54 - Right/left (X-axis), left position
- B55 - Front/back (Y-axis), rear position
- B56 - Front/back (Y-axis), front position
- B57 - Up/down (Z-axis), middle position
- B58 - Rotation (O-axis), left
- B59 - Rotation (O-axis), right
- B60 - Applicator head tray contact
- B61 - Up/down (Z-axis), upper position
- B64 - Label pickup confirmation

X-axis - right/left, Y-axis - front/back, Z-axis - up/down