

Film Feeder Movement Unit

Part Number/Price

REF #	PART #	DESCRIPTION	QTY	SYNONYM	PRICE
1	Consult	Frame, feeder move, front	1	090-0765-26	\$69.00
2	Consult	Frame, feeder move, rear	1	098-8178-09	\$75.00
3	Consult	Frame, feeder move, R	1	090-0728-37	\$79.00
4	Consult	Frame, feeder move, L	1	090-0729-21	\$69.00
5	Consult	Shaft, linear	2	069-2247-01	\$58.00
6	Consult	Housing, linear, feeder	4	076-1757-07	\$25.00
7	Consult	Bearing, linear bush	8	068-5133-03	\$30.00
8	Consult	Bracket, feeder, FR	1	072-2189-24	\$25.00
9	Consult	Bracket, feeder, FL	1	072-2187-36	\$25.00
10	Consult	Distance, feeder move, front	2	076-1920-08	\$2.00
11	Consult	Holder, timing belt, front	2	076-1919-03	\$2.00
12	Consult	Bracket, feeder, RR	1	072-2188-21	\$25.00
13	Consult	Bracket, feeder, RL	1	072-2186-41	\$25.00
14	Consult	Distance, feeder move, rear	2	076-1946-04	\$2.00
15	Consult	Holder, timing belt, rear	2	076-1918-00	\$2.00
16	Consult	Timing belt, S5M,	4	070-1253-03	\$23.00
17	Consult	Bearing, radial, deep groove	4	030-6368-00	\$24.00
18	Consult	Shaft, feeder move, rear	1	069-2217-36	\$72.00
19	Consult	Shaft, feeder move, front	1	069-2216-32	\$72.00
20	172550	Timing pulley, S5M, AF	6	073-7226-06	\$25.50
21	Consult	Timing belt, S5M	2	070-1076-01	\$21.00
23	Consult	Shaft, tension, front feeder	2	090-0674-02	\$14.00
24	Consult	Shaft, tension, rear feeder	2	090-0673-09	\$20.00
25	93622	Pulley, idler	1	045-3957-08	\$16.50
26	Consult	Timing pulley, S5M, AF	5	073-7221-08	\$22.00
27	47168	Bearing, radial, deep groove	10	000-3659-05	\$22.00
28	Consult	Bearing unit, pillow	2	004-4361-09	\$28.00
29	Consult	Collar spacer	4	000-0406-09	\$1.00
30	Consult	Shaft, drive, feeder	1	090-0685-03	\$74.00
31	Consult	Timing pulley, S5M, AF	1	073-7227-00	\$27.00
32	Consult	Timing belt, S5M	1	072-2277-01	\$28.00
33	157906	Timing belt, S5M	2	072-2278-04	\$34.00
34	Consult	Timing pulley, S5M	2	079-3500-06	\$6.00
36	Consult	Flange, feeder move	4	090-0783-05	\$5.00
37	Consult	Guide, pulley	1	090-0994-04	\$7.00
38	Consult	Guide, pulley	1	090-0993-01	\$7.00
39	Consult	Shaft, pulley, tension	2	069-2189-35	\$20.00
40	88649	Pulley, tension	2	048-3915-03	\$10.00
41	Consult	Detect plate, feeder move, rear	1	090-0684-28	\$16.00
42	Consult	Detect plate, feeder move, front	1	090-0683-33	\$15.00
43	Consult	Guide, harness, upper	1	070-5216-19	\$10.00
44	Consult	Guide, harness	1	090-0687-38	\$38.00
45	Consult	Rubber pad	4	052-4630-01	\$1.00
46	Consult	Bracket, PWB, feeder move	1	090-0681-27	\$26.00
47	Consult	Bracket, PWB, feeder move	1	090-0682-21	\$26.00
48	Consult	Cover, PWB, feeder move	1	090-0766-11	\$8.00
49	Consult	Cover, PWB, feeder move	1	090-0767-14	\$8.00
50	Consult	Bracket, motor, F drive	1	072-2090-01	\$35.00

Price and availability confirmation recommended

An ISO 9001 Registered Company ©2022 Rice Lake Weighing Systems 1/22 Prices and specifications subject to change without notice. Visit ricelake.com for current prices.

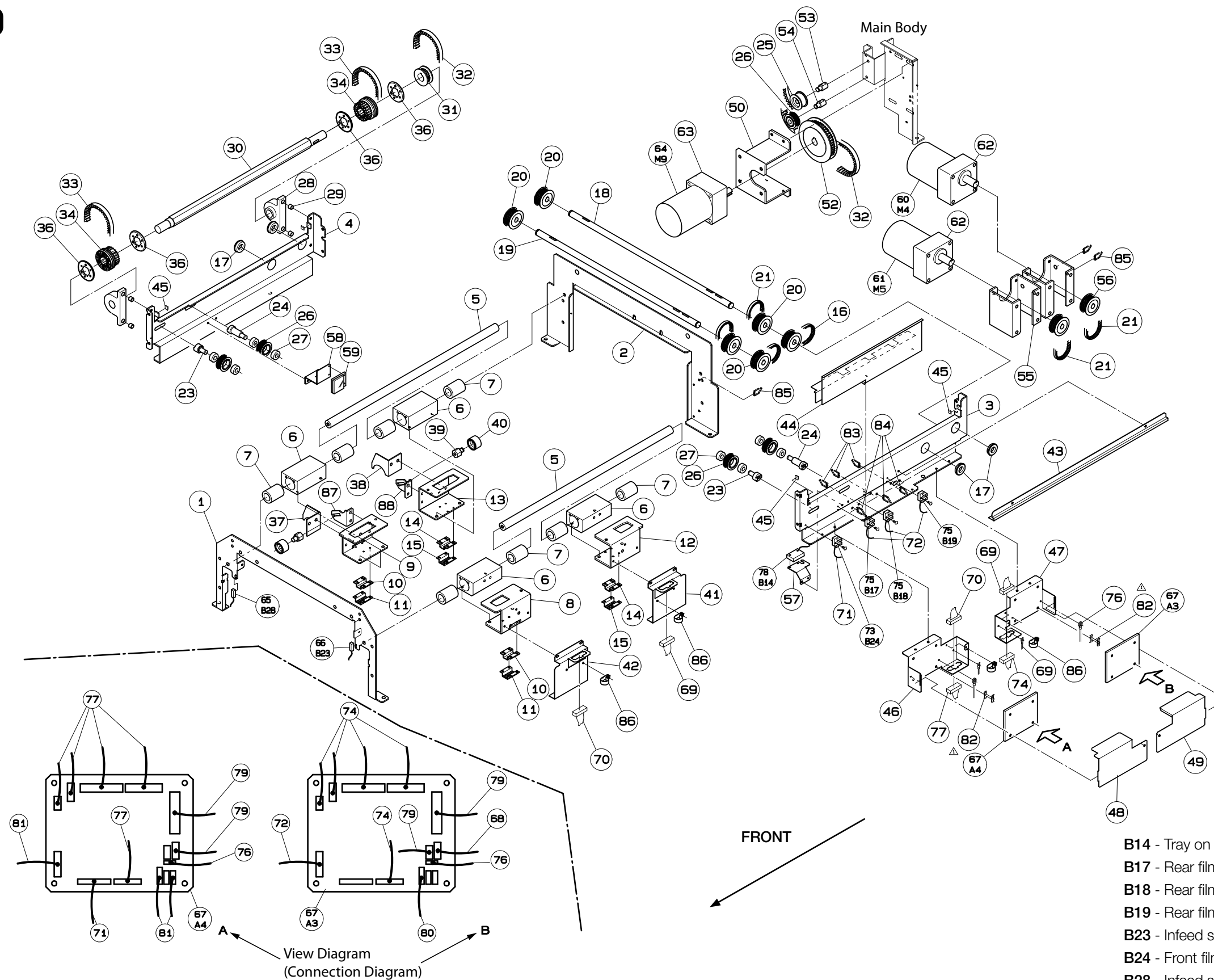
Film Feeder Movement Unit

Part Number/Price

REF #	PART #	DESCRIPTION	QTY	SYNONYM	PRICE
52	Consult	Timing pulley, S5M, AF	1	073-7228-03	\$41.00
53	Consult	Shaft, pulley, feeder drive	1	072-2085-02	\$14.00
54	Consult	Shaft pulley, feeder drive	1	072-2358-09	\$18.00
55	Consult	Bracket, motor, F move	2	090-0678-07	\$26.00
56	Consult	Timing pulley, S5M, AF	2	073-7225-02	\$22.00
57	Consult	Bracket, sensor, lift	1	090-0677-21	\$7.00
58	Consult	Bracket, reflector, lift	1	090-0686-25	\$10.00
59	172556	Reflector	1	073-7263-04	\$15.50
60	Consult	Motor, DC brushless, with brake, front feeder move (M4)	1	070-1422-06	\$282.00
61	191234	Motor, DC brushless, with brake, rear feeder move (M5)	1	070-1421-02	\$307.50
62	172557	Gear head	2	055-9082-01	\$210.50
63	Consult	Gear head	1	070-5252-04	\$134.00
64	173162	Motor, DC brushless, feeder drive (M9)	1	070-1424-03	\$201.00
65	152168	Photo, interrupter, emission, left infeed safety (B28)	1	072-2099-04	\$15.50
66	152169	Photo, interrupter, receive, right infeed safety (B23)	1	072-2100-05	\$26.50
67	157894	PWB, P-922 A-1 (A3, A4)	2	068-9900-35	\$158.50
68	Consult	Harness, C2, comm	1	069-6809-53	\$11.00
69	157919	Harness, C4, feeder move	1	071-4656-27	\$78.50
70	188870	Harness, C4, feeder move	1	072-2120-19	\$75.50
71	188871	Harness, C3, feeder move	1	071-4662-20	\$10.00
72	Consult	Harness, C4, feeder move	1	070-9688-18	\$13.00
73	104239	Photo interrupter, trans, front feeder home, white conn. (B24)	1	070-5204-14	\$10.00
74	188872	Harness, C6, feeder rear	1	069-4560-31	\$27.50
75	157856	Photo interrupter, trans, rear feeder position, black conn. (B17, B18, B19)	3	070-5205-18	\$12.00
76	Consult	Harness, C2, ground	2	072-2104-28	\$2.00
77	Consult	Harness, C6, feeder front	1	072-2234-10	\$21.00
78	157857	Sensor assy, lift, tray detect (B14)	1	072-2231-28	\$149.50
79	188873	Harness, C5, feeder move	1	072-2238-32	\$33.00
80	Consult	Harness, C2, lift	1	072-2294-13	\$6.00
81	Consult	Harness, C19, SW right	1	076-9878-21	\$38.00
82	47027	PWB accessory, card spacer	8	000-1796-05	\$1.50
83	Consult	Accessory, clamp, LWS clamp	3	073-7212-04	\$1.00
84	Consult	Accessory, clamp, LWS clamp	3	073-7213-08	\$1.00
85	Consult	Accessory, clamp, LWS clamp	3	073-7214-01	\$1.00
86	Consult	Accessory, clamp, nylon clamp	4	027-8515-00	\$1.00
87	Consult	Bracket, tension, F move	1	090-0990-00	\$9.00
88	Consult	Bracket, tension, F move	1	090-0991-03	\$9.00

Ishida WM-4000

Film Feeder Movement Unit



- B14 - Tray on lift detect
- B17 - Rear film feeder, film loading position
- B18 - Rear film feeder, small lift clearance
- B19 - Rear film feeder, large lift clearance
- B23 - Infeed safety, right, receiver
- B24 - Front film feeder, home position
- B28 - Infeed safety, left, emitter