

# Applicator Unit - POP

## Part Number/Price

REF #	PART #	DESCRIPTION	QTY	SYNONYM	PRICE
1	Consult	Frame, applicator	1	100-010-7118-00	Consult
2	Consult	Shaft, linear	2	000-106-6899-29	Consult
3	172606	Housing, linear:X	1	000-135-7086-03	Consult
4	157900	Bearing, linear bush	3	000-069-4929-04	Consult
5	Consult	Holder, belt	1	000-136-3545-09	Consult
6	178201	Timing belt, XL	1	000-116-1996-19	Consult
7	Consult	Timing pulley, XL, AF	1	000-109-8408-13	Consult
8	172607	Pulley, tension	2	000-111-8488-03	Consult
9	Consult	Shaft, bearing	2	000-108-0297-39	Consult
10	172573	Motor assy stepping X, M400	1	000-138-2122-08	Consult
11	Consult	Housing, linear	1	000-051-1076-00	Consult
12	Consult	Bracket, applicator	1	100-010-9478-00	Consult
13	Consult	Bracket, applicator	1	100-010-9480-01	Consult
14	Consult	Bracket, rotation, lower	1	000-136-3558-07	Consult
15	Consult	Bracket, rotation, upper	1	100-011-1266-00	Consult
16	193542	Shaft, slide, Z2	1	000-116-1714-15	Consult
17	193543	Block B, slide, Z	1	000-112-6559-04	Consult
18	178202	Timing belt, S3M	1	100-009-0902-00	Consult
19	201858	Timing pulley, S3M, BF	1	000-140-7383-02	Consult
20	125715	Motor assy stepping, Z, M401	1	000-111-8337-04	Consult
21	Consult	Holder, belt, S3M	1	000-141-6390-02	Consult
22	172614	Timing belt, XL	1	000-020-0970-01	Consult
23	195586	Timing pulley, XL	1	000-059-8460-10	Consult
24	Consult	Timing pulley, XL	1	000-059-8296-42	Consult
25	Consult	Detecting plate, rotation, upper	1	100-003-3444-00	Consult
26	Consult	Detect plate, rotation, lower	1	000-136-3548-00	Consult
27	178203	Bearing Unit, linear rotation	1	000-116-1707-19	Consult
28	172616	Bearing, radial, deep groove	2	000-057-0387-08	Consult
29	172617	Motor assy stepping, rotation, M402	1	000-138-2124-05	Consult
30	Consult	Bracket, arm	1	000-122-1605-13	Consult
31	Consult	Shaft, fulcrum, suction	1	000-122-1606-16	Consult
32	78083	Bush	2	000-037-4818-02	Consult
33	Consult	Bracket, fan	1	100-009-5899-01	Consult
34	Consult	Catch, magnet	1	000-112-6892-05	Consult
35	Consult	Spring, plate, applicator	1	100-011-0990-00	Consult
36	Consult	Spacer, suction	1	100-011-0983-01	Consult
37	Consult	Block B, suction, upper	1	000-122-1995-06	Consult
38	Consult	Bracket, suction, slider	1	100-011-0733-01	Consult
39	Consult	Threaded rod, round, FF	2	000-108-0376-11	Consult
40	172618	Spring, coil, compressive	2	000-108-0374-14	Consult
41	Consult	Block B, suction, slide	1	000-122-1996-00	Consult
42	Consult	Detect plate, suction	1	000-122-1610-11	Consult
43	Consult	Bracket, sensor	1	100-007-8595-01	Consult
44	178204	Block B, suction, cushion, pop	1	100-011-0955-01	Consult
—	42631	Screw, countersunk, M3 0.5 x 6 mm, applicator cushion mount	2	002-1911-01	Consult
45	Consult	Cover, harness	1	100-011-0982-01	Consult
46	200458	Tapping screw, cross pan head, M3x40 SST	4	000-125-5199-04	Consult
501	171859	PWB P-1006C-5, rotation (O-axis), A401	1	000-139-9340-06	Consult
502	171860	PWB P-1006C-6, X-axis, Z-axis, A402	1	000-139-9341-00	Consult
503	178184	Power supply, switching, LFP150-24-GJ1Y, U400, U401	2	100-010-4289-00	Consult
504	171868	Electromagnetic contactor, K400	1	000-092-5601-03	Consult
505	72857	Fuse holder, terminal type	1	000-000-4119-04	Consult
506	72856	Fuser holder, terminal type	3	000-040-2724-07	Consult
507	125707	Fuse, glass tube, 6A, 250V, 3AG	4	000-069-2407-00	Consult
508	Consult	Fan assy PS	1	000-111-8425-09	Consult
509	104239	Photo interruptor, transmitter, white conn., B401-B403, B406-B407	1	000-070-5204-14	Consult
510	171837	Photo interruptor, trans, straight connector, B404	1	000-132-6468-07	Consult

Note: X-axis - right/left, Z-axis - up/down

# Applicator Unit - POP

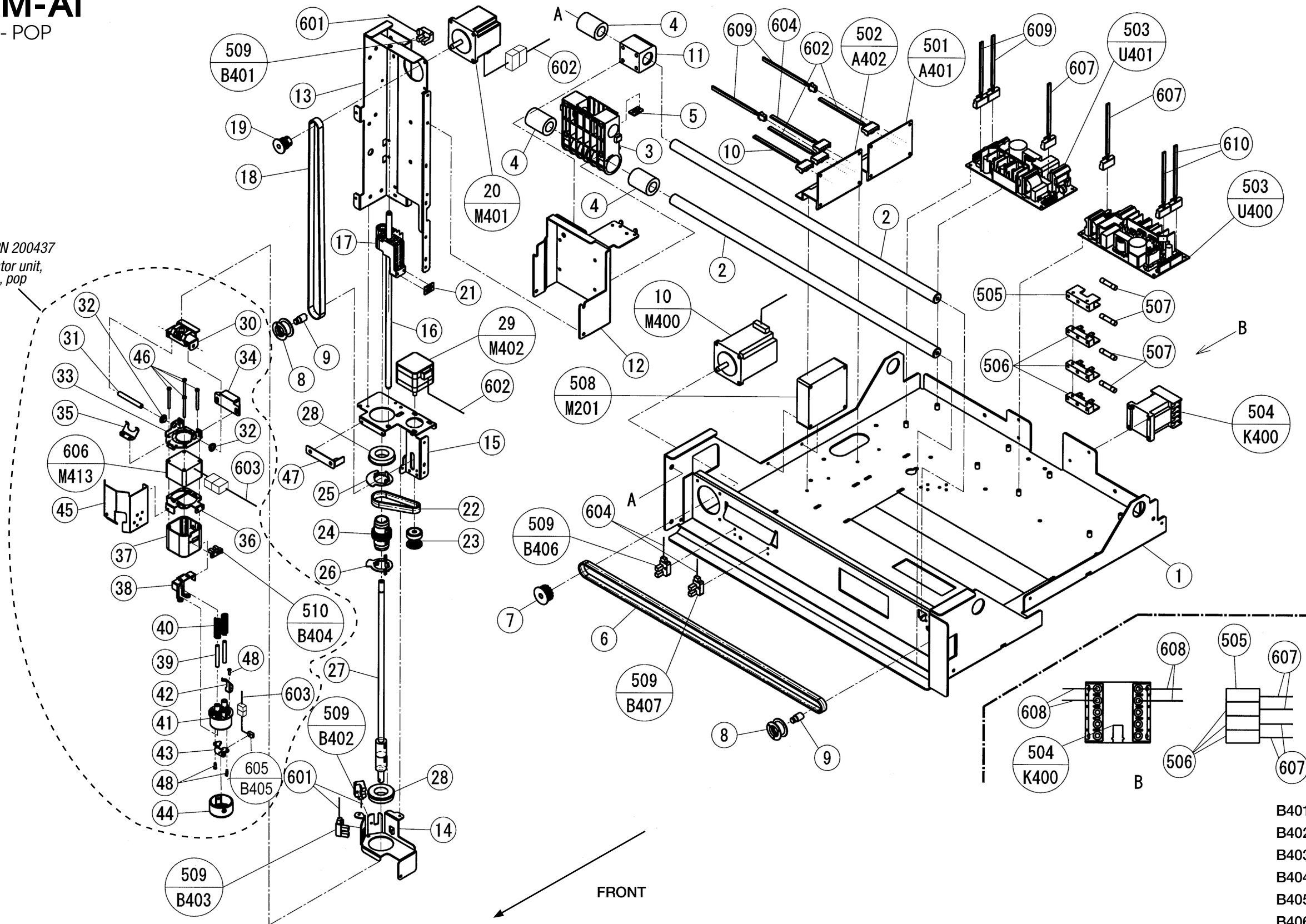
## Part Number/Price

REF #	PART #	DESCRIPTION	QTY	SYNONYM	PRICE
601	<b>178211</b>	Harness, C6 (A401 XJ5 to B401, B402, B403, X403 and X401)	1	100-007-7776-00	Consult
602	<b>178212</b>	Harness, C4 (A401 XJ4 to M402 and A402 XJ4 to M401)	1	100-011-0957-00	Consult
603	<b>178213</b>	Harness, C3 coiled cable to B405, M413	1	100-011-1342-01	Consult
604	<b>Consult</b>	Harness, C3 (A402 XJ5 to B406, B407)	1	100-007-7835-00	Consult
605	<b>178214</b>	Sensor assy suction, 4-pin, B405	1	100-007-7769-01	Consult
606	<b>178215</b>	Fan assy, M413, 5-pin	1	100-007-9342-01	Consult
607	<b>Consult</b>	Harness, C6, power supply AC (F400, F401 to U400 CN1 and F402, F403 to U401 CN1)	1	100-007-7772-00	Consult
608	<b>Consult</b>	Harness, C10, MC (K400 to A400 XJ8 and K400-A2 to K101-A1 and K401-33 to K101-A2)	1	100-011-0876-00	Consult
609	<b>Consult</b>	Harness, C4, power DC (U401 CN2, CN3 to A401 XJ1 and A402 XJ1)	1	100-011-1261-00	Consult
610	<b>Consult</b>	Harness, C3, power DC (U400 CN2, CN3 to A400 XJ12 and A410 XJ19)	1	100-007-7771-00	Consult
ASSY	<b>200437</b>	Applicator unit, suction, pop (includes coiled cable)		100-027-5197-00	Consult

# Ishida WM-Ai

Applicator Unit - POP

ASSY PN 200437  
Applicator unit,  
suction, pop



- B401 - Z-axis home position
- B402 - Rotation position, upper flag
- B403 - Rotation position, lower flag
- B404 - Tray contact detector
- B405 - Label present detector
- B406 - X-axis label pickup position
- B407 - X-axis home position