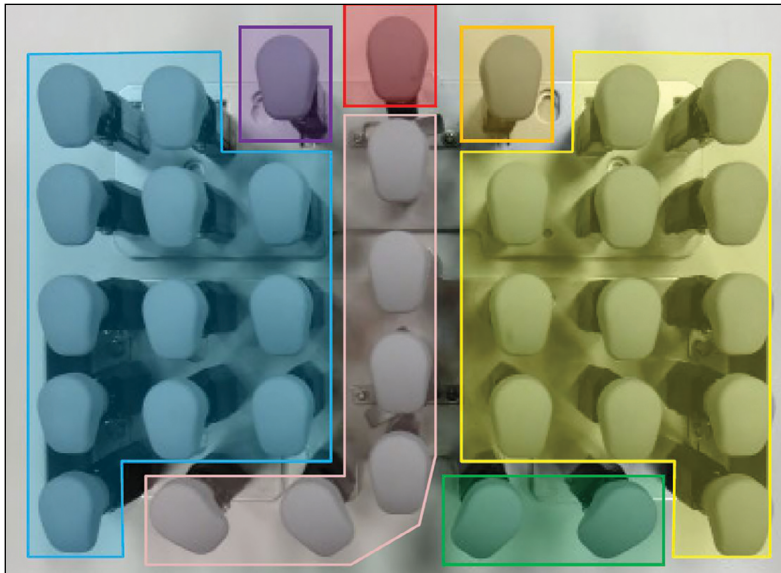


Lift Head Unit

Part Number/Price

REF #	PART #	DESCRIPTION	QTY	SYNONYM	PRICE
1	191262	Plate B, head, lift F	1	000-149-6850-08	Consult
2	191263	Plate B, head, lift R	1	000-112-6650-01	Consult
3	157844	Bracket, lift, fix	2	000-116-1863-08	Consult
4	157845	Plate, lift, head	2	000-116-1864-01	Consult
5	157846	Shaft, lift, fix	2	000-101-1727-09	Consult
6	172335	Spring, coil, compressive	2	000-136-3677-07	Consult
7	125697	Lift head assy LF	6	000-112-6761-01	Consult
8	171831	Lift head, assy RF	2	000-112-6762-04	Consult
9	125698	Lift head, assy L	12	000-112-6763-08	Consult
10	125699	Lift head, assy R	12	000-112-6764-01	Consult
11	159701	Tapping screw, M4x14, SST, cross flat head	35	000-090-0595-01	Consult
12	202267	Guard, film, lift, right	1	000-149-6848-18	Consult
13	202268	Guard, film, lift, left	1	000-149-6849-11	Consult
14	171832	Lift head assy, LF blast	1	000-150-7136-08	Consult
15	171833	Lift head assy, L blast	1	000-150-7135-04	Consult
16	171834	Lift head assy, R blast	1	000-150-7134-01	Consult
ASSY	203356	Lift head unit assy, complete		000-149-7000-03	Consult



LF 125697 Pink
RF 171831 Green
L 125698 Blue
R 125699 Yellow
L with Blasting 171833 Purple
R with Blasting 171834 Orange
LF with Blasting 171832 Red

Ishida WM-AI

Ishida WM-Ai

Lift Head Unit

