

480/482 Legend Series Indicators

Concurrent Fast/Slow Setpoint Batching Routine

This document shows how to configure and wire a 480 or 482 Legend Series Indicator to perform a setpoint batching routine that concurrently fills using two setpoints.

Setpoint 1 is set to trigger the beginning of the batch routine when the start button is pressed. The batch routine is set to energize both a fast fill output and a slow fill output (setpoints 2 and 3) to fill concurrently. When the weight value reaches value A, the batch routine then closes the fast fill output (setpoint 2) so that only slow fill (setpoint 3) is energized. When the weight reaches value B, the slow fill output (setpoint 3) is closed and setpoint 1 is reset so that the routine can be performed again.



Manuals and additional resources are available from Rice Lake Weighing Systems at www.ricelake.com/manuals

Warranty information is available at www.ricelake.com/warranties

Setpoint Configuration

Configure the indicator with the batching setpoints as show in [Table 1](#). Target value B is set to represent a full batch. Target value A must be set to a value that is smaller than target value B so that the flow slows as it approaches the full batch value. For configuration details, see the 480 or 482 Legend Series Technical Manual (PN 119201 and PN 165124).

Setpoint	Batch	Trip	Value	DIO	Description
1	ON	Higher	B	1	Gatekeeper
2	OFF	Lower	A	2	Fast Fill
3	OFF	Lower	B	3	Slow Fill

Table 1. Concurrent Batching Setpoints



NOTE: If the target value of setpoint 1 is programmed higher than target value 3, the batch routine will not be automatically reset. The routine will not be able to restart until the target value of setpoint 1 has been met.

Wiring

Wire the relay board to the relay rack as shown in [Figure 1](#).

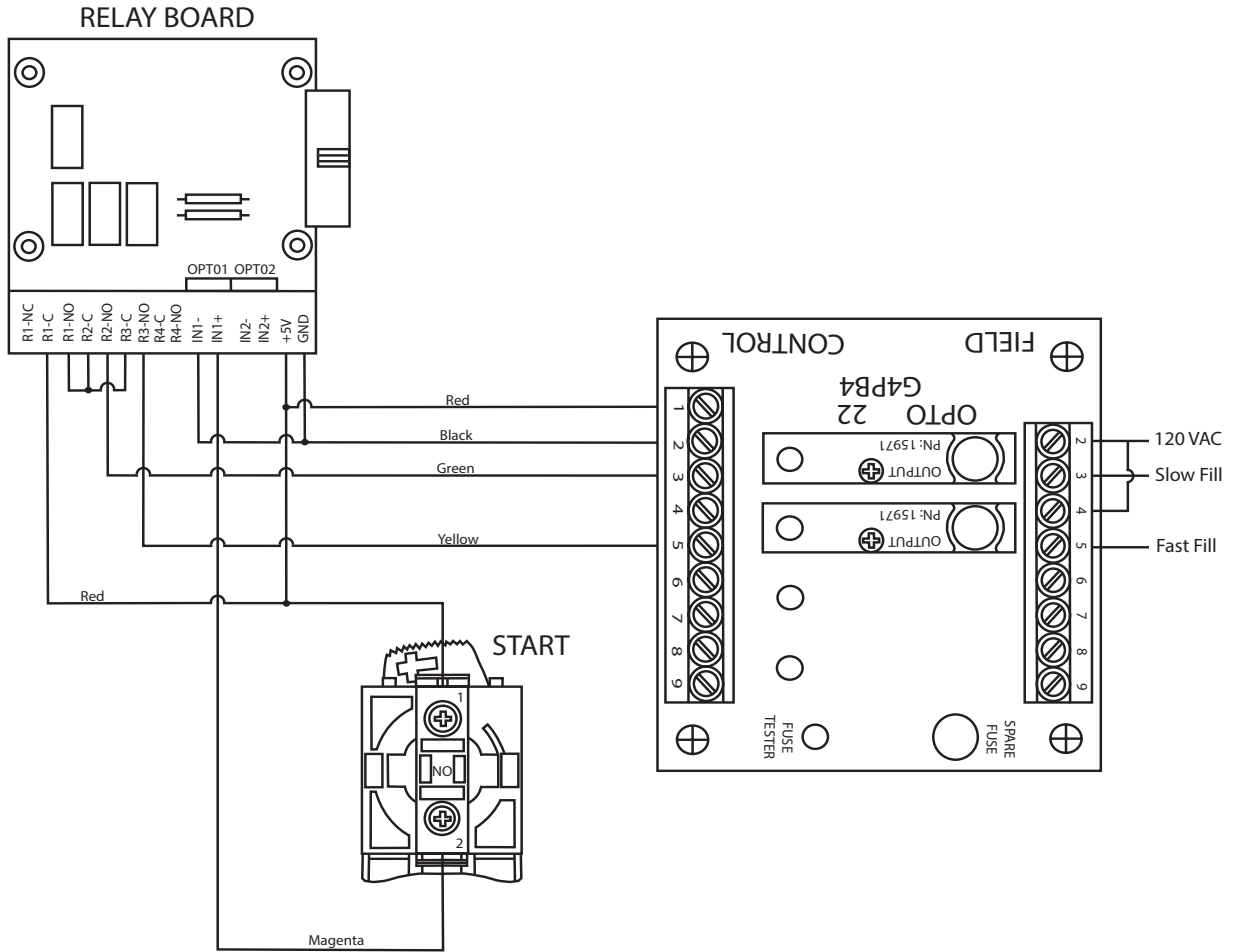


Figure 1. Concurrent Fast/Slow Fill Wiring Diagram with Opto22 Setup



© Rice Lake Weighing Systems Content subject to change without notice.

230 W. Coleman St. • Rice Lake, WI 54868 • USA
 U.S. 800-472-6703 • Canada/Mexico 800-321-6703 • International 715-234-9171 • Europe +31 (0)26 472 1319