

CW-90/90X Checkweigher

Firmware Update With Flash Magic

Flash Magic is the software update tool for the Remote Display. This free software can be downloaded at <http://www.flashmagictool.com/>.

1. Unplug power to the CW-90/90X and remove the back plate.
2. Wire the serial cable to the CW-90/90X's Port 1. Refer to Table 1.

DB9 Cable				CW-90/90X Connector (J2)		
Pin/Color	Signal	In/Out	Description	Pin	Description	In/Out
1/Brown	DCD	In	Data Carrier Detect	NC	NA	NA
2/Red	RxD	In	Receive Data	3	Tx	Out
3/Orange	TxD	Out	Transmit Data	4	Rx	In
4/Yellow	DTR	Out	Data Terminal Ready	5	DTR	In
5/Green	GND	-----	Ground	1 or 2	Gnd	-----
6/Blue	DSR	In	Data Set Ready	NC	NA	NA
7/Purple	RTS	Out	Request to Send	6	RTS	In
8/Gray	CTS	In	Clear to Send	NC	NA	NA
9/Black	RI	In	Ring Indicator	NC	NA	NA

Table 1. Cable connection settings

3. Install jumpers on JP3 and JP4 as shown in Figure 1-1.

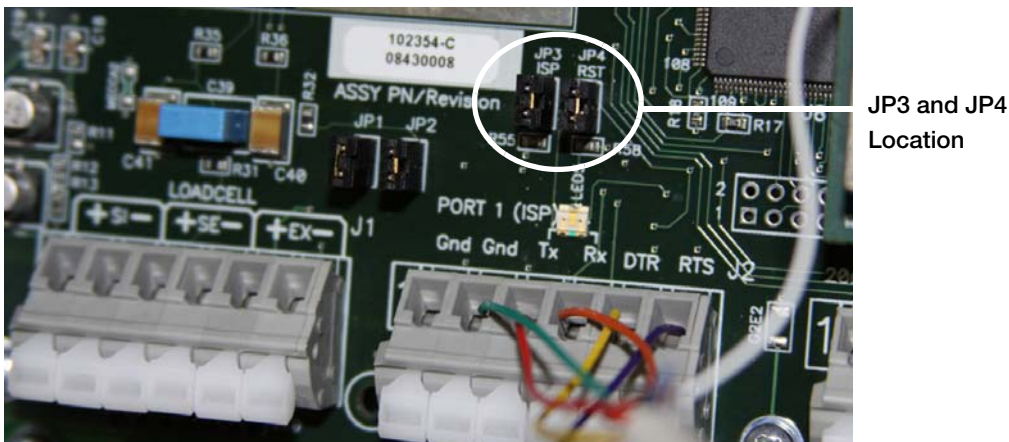


Figure 1-1. Jumpers installed on JP3 and JP4

4. Plug in power to the CW-90/90X and press the indicator's **Power** button.
5. Open the Flash Magic program.

6. Set the COM Port to the port you are using; Baud Rate to 57600; Device to LPC2388; Interface to None (ISP); and Oscillator (MHz) to 12.0.
7. Check *Erase blocks used by Hex File*.
8. Using the **Browse...** button, locate the updated firmware file (.hex).
9. Check *Verify after programming* and click **Start**.
The update will take several moments. The status is displayed at the bottom of the Flash Magic window.

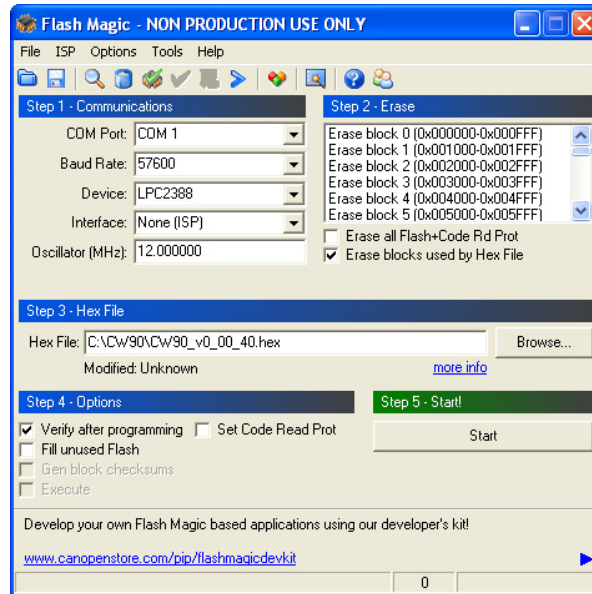


Figure 1-2. Flash Magic settings

10. When the update is complete, the CW-90/90X will display *Version Updated. Press Enter to Reset Configuration*.
11. Press the Power button to power-down the CW-90.
12. Remove JP3 and JP4 and turn power back on. The firmware update is complete.



© Rice Lake Weighing Systems Specifications subject to change without notice.
Rice Lake Weighing Systems is an ISO 9001 registered company.

230 W. Coleman St. • Rice Lake, WI 54868 • USA

U.S. 800-472-6703 • Canada/Mexico 800-321-6703 • International 715-234-9171 • Europe +31 (0) 88 2349171