

# Interchange Database Management Operation

Interchange is designed to assist users with the management of Rice Lake Weighing Systems' 920i and 1280 indicator databases.

## Connecting to the Indicator

1. Open the Interchange application.
2. Click on the **Tools** menu.
3. Click on **Options**.
4. Choose the preferred communications type.



**Note** *Most applications will use the communications type RS-232 or TCP/IP networks. If there are automatic job files that need to be created, ensure that Auto Detect is deselected.*

5. After setting up communication options, (see Connect to Indicator and RS-232 Settings) click on **Communications**.
6. Click on **Connect**.



**Note** *If TCP/IP is the selected connection mode, you will be asked for the IP address and port number of the TCP/IP card installed in the 920i/1280 Enterprise.*

Interchange will update to match the database structure of the 920i/1280.

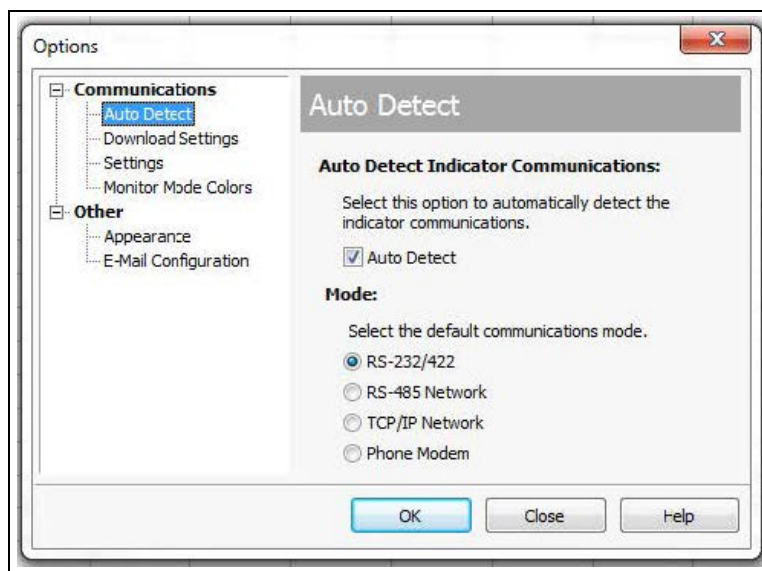


Figure 1. Communications Mode

## RS-232 Settings

The PC Comm Port determines which communications (for all methods except TCP/IP) port Interchange uses to communicate with the indicator. The list of ports is determined by scanning the PC's hardware; only valid ports appear.

1. Determine the designated PC Comm Port.



**Note** *If a USB-Serial Adapter is being used, do not choose COM1 as the PC Comm Port.*

2. Set Baud Rate.

## Database Buttons

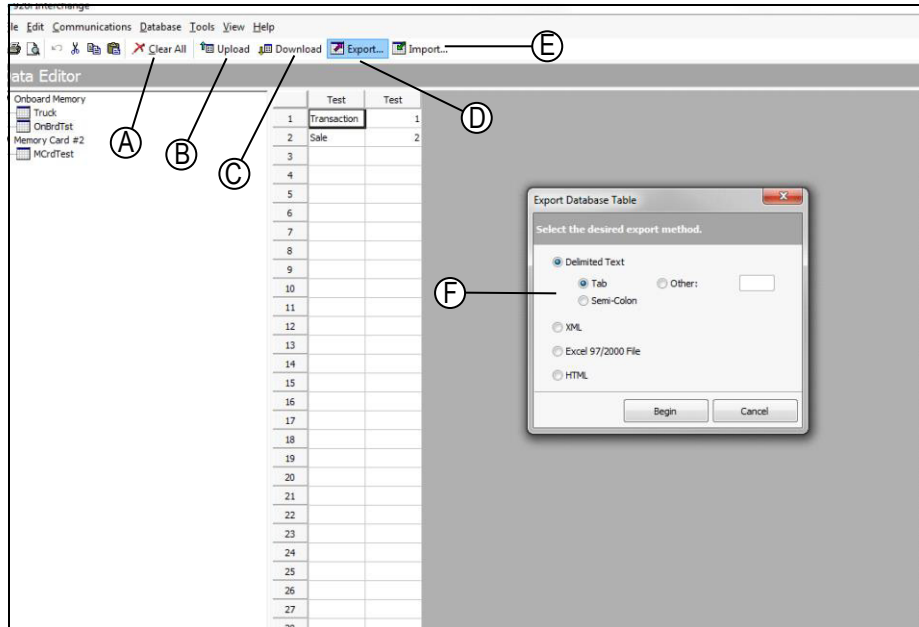


Figure 2. Database Buttons

Item	Database Button	Description
A	Clear All	Deletes everything in the selected database both in program and on the 920i/1280 Enterprise.
B	Upload	Pulls selected database records from 920i/1280 Enterprise to the program.
C	Download	Sends selected database records from the program to the 920i/1280 Enterprise.
D	Export	Makes an external record of the selected database.
E	Import	Brings in an external file to populate the selected database.
F	Export Database Table	When Export is selected, the options are as listed here. Interchange will prompt you to save the export file once an option has been selected.

Table 1. Database Buttons and Descriptions

### Best Practices for Manually Editing a Database

- Upload from 920i/1280 Enterprise.
- Export to a delimited .TXT file.
- Make necessary changes externally in the .TXT file.
- Clear the database in Interchange so that old data is not being written over.
- Import the modified file into the correct database in Interchange.
- Download the new database to the 920i/1280 Enterprise.

## Sample Outputs of Export

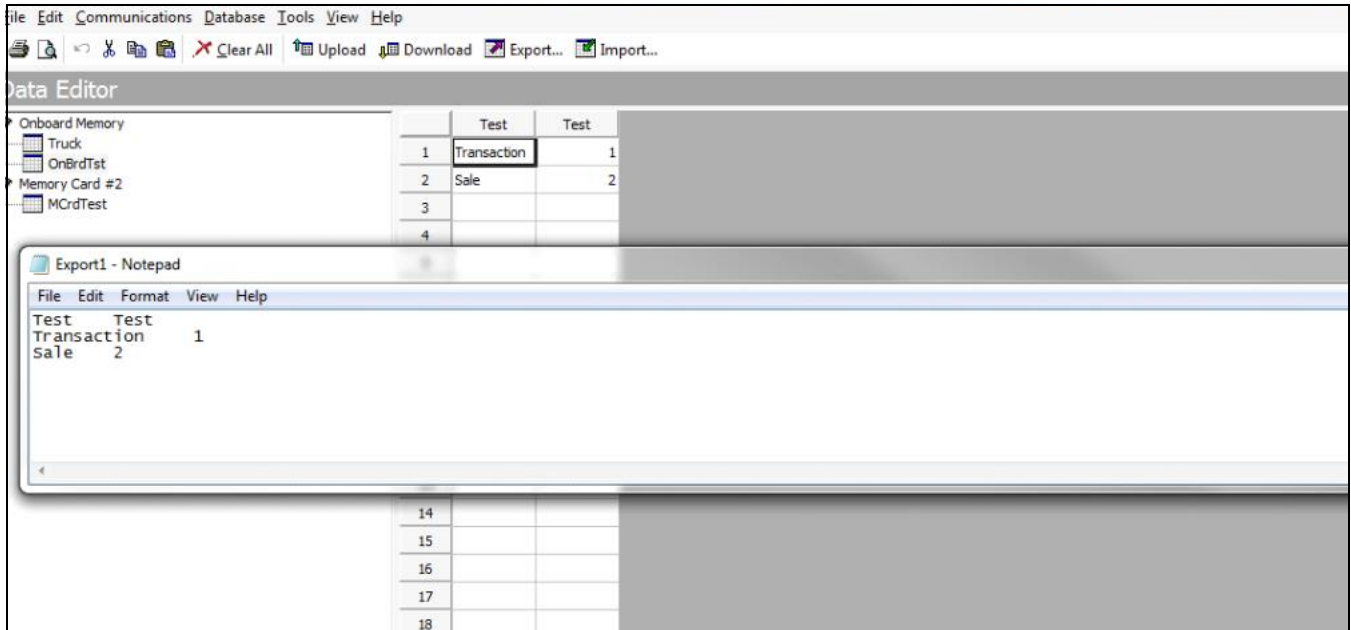


Figure 3. Sample Output

## Manual Importing a Database

1. Click **Import** button.
2. Choose the file that needs to be imported.
3. Start the import at Row 2 if the external file contains headers.
4. Select the appropriate delimiter to correctly separate the fields within the text file.

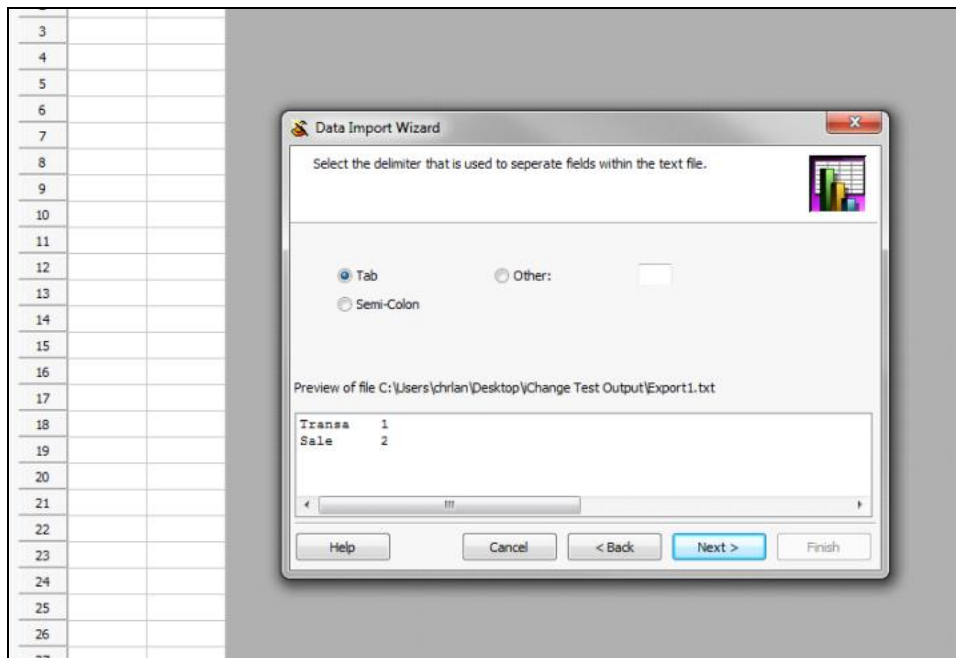


Figure 4. Delimiter Selection

5. Click **Next**.
6. Click **Finish**.

## Creating an Export Job

Automatic Export Jobs can be created in Interchange. These are small files that can be saved anywhere on the computer. When these files are run, they open Interchange in the background, upload and store any new data. The only visible notice the user is a "Job Successful" or "Job Unsuccessful" notification that pops up from Windows Taskbar at the end of the job.

1. Click on the **Tools** menu.
2. Click on **Export Job Wizard**.
3. Select the communication mode that the job will use.
4. Select the database where the job will collect and export the data.

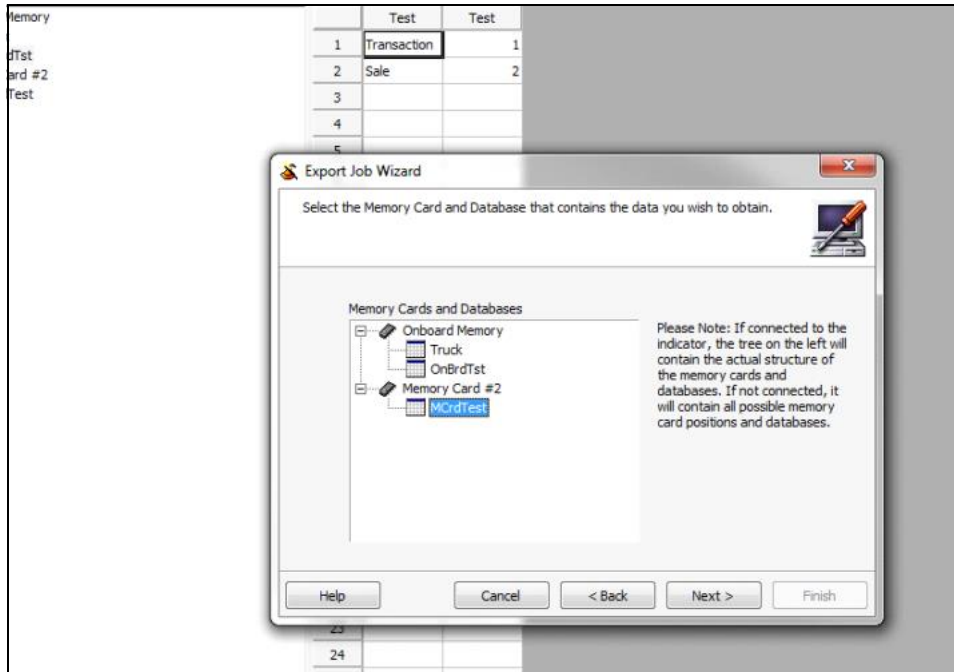


Figure 5. Memory Cards and Databases

5. Select the type of file that the job will export.
6. Enter the desired output file destination and file name for the exported file.

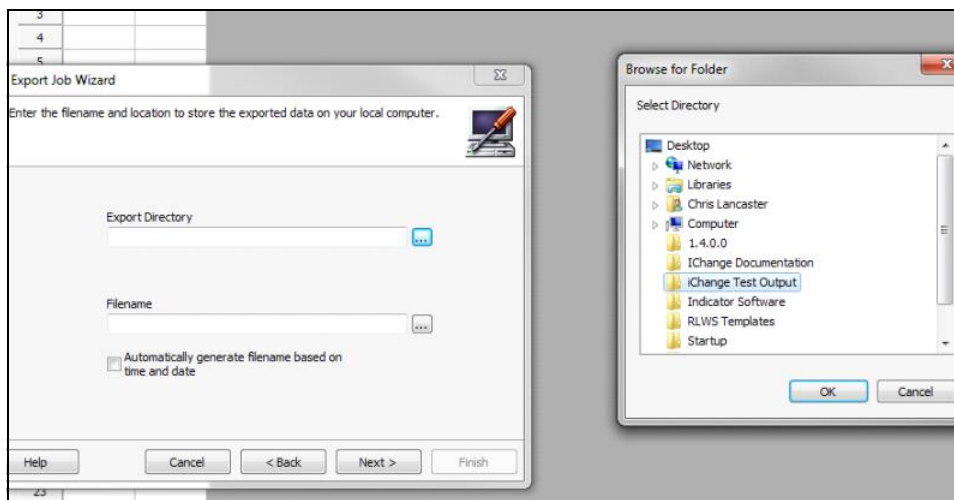


Figure 6. Export Directory and File Name

7. Select the destination for the exported file.



**Note** *If the file is being exported to an email or FTP Server, fill in the appropriate protocols on the following screen.*

8. Check the “Clear the database after completion” box, if desired.
9. Check the “Create a shortcut for this job on the Desktop” box, if desired.
10. Click **Finish**.

## Job File

Below is a sample Job File. This file can be run manually or automatically by using Windows Task Scheduler.

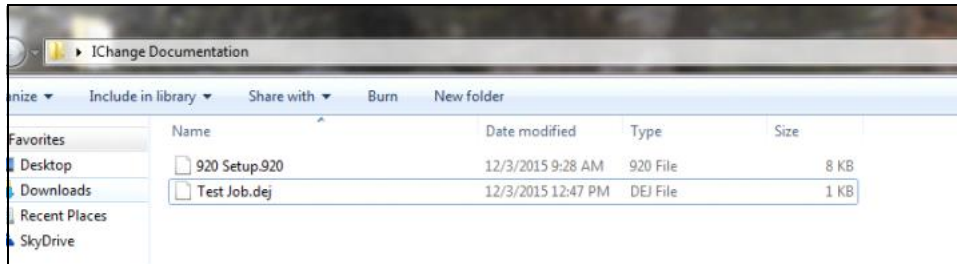


Figure 7. Interchange Job File

After running a job file, a notification will appear. The database output file will appear in the chosen storage location.

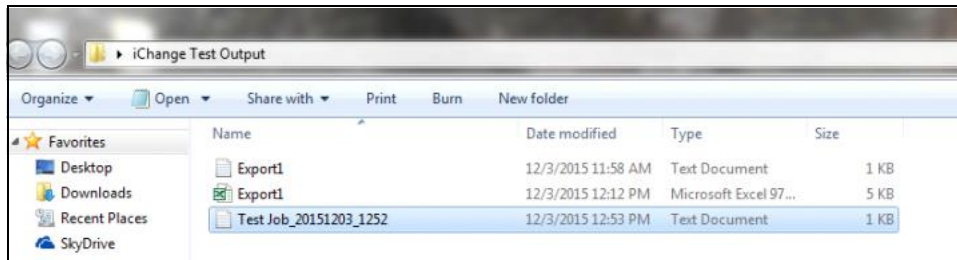


Figure 8. Database Output File



© Rice Lake Weighing Systems Specifications subject to change without notice.  
Rice Lake Weighing Systems is an ISO 9001 registered company.

230 W. Coleman St. • Rice Lake, WI 54868 • USA  
U.S. 800-472-6703 • Canada/Mexico 800-321-6703 • International 715-234-9171 • Europe +31 (0)26 472 1319