

ScaleCore 3 Products

MSI Wi-Fi Setup

The Wi-Fi card is factory installed. To setup Wi-Fi on a ScaleCore 3 product use the following directions.



Manuals can be viewed or downloaded from the Rice Lake Weighing Systems website at www.ricelake.com/manuals

Wi-Fi Setup Information Required

To customize a Wi-Fi module, have the company IT person supply the following information.

Network Topology

- **Server Mode** (Soft AP) – laptop/tablet connecting directly to the scale
Only one module may be connected at a time in this mode
- **Client Mode** – scale connects to an existing router
Allows a laptop/tablet to connect to multiple scales at once

Server Mode

SSID – name of the network the laptop/tablet is connecting to.

Security Mode

Open - allows anyone to connect to the scale.

WPA2 – requires a password to connect to the scale.

Password – Only necessary if security mode is set to *WPA2*.

DHCP

On – assign a dynamic IP to the scale.

The laptop/tablet connecting to the scale may have a dynamic IP (Recommended).

Off – assign a static IP to the scale. The laptop/tablet connecting to the scale must also have a static IP.

- IP address – static IP of the scale
- Net Mask/Gateway to assign to the scale

Port – used to connect to the scale (default 2000).

Client Mode

SSID – name of the router the scale will connect to.

Security Mode – the security mode of the router.

Password – if security mode of the router is *WPA2*, the password used to connect to the router.

DHCP

On – allows router to assign a dynamic IP to the scale (recommended).

Off – assign a static IP to the scale. This IP must be added to the static IP list in the router.

- IP Address – Static IP of the scale
- Net Mask/Gateway to assign to the scale

Port – used to connect to the scale, must be accessible from the router. (default 2000).




Wi-Fi Setup

1. Connect to the network of the Wi-Fi module.



Figure 1. Connect to Wi-Fi

2. Download [MSI WiFi Connect](#) from the Rice Lake website and install on PC.
3. Double click  **MSI Wifi Connect.exe** to open the program. The *Connect Options* popup displays.

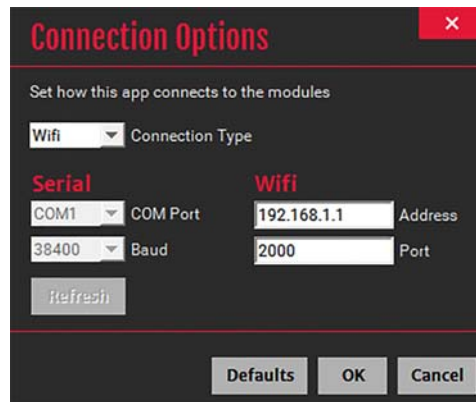


Figure 2. Connection Options Popup

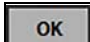
4. Set the following parameters:
 - Connection Type: Wifi
 - Address: Module IP address (default is 192.168.1.1)
 - Port: Module port (default is 2000)
5. Press . The Wi-Fi setup parameters display.



Figure 3. Wi-Fi Setup Parameters

6. Set the parameters as shown below. Any values not called out below can be left as-is.
 - Enable DHCP – box checked
 - Topology – select one:
 - Server – if using the module as an access point.
 - Client – if the module is connecting to an existing access point.
 - SSID Name – enter name:
 - Server – the access point name the module will broadcast.
 - Client – the name of the access point the module should connect to.
 - Security Mode – select one:
 - Server – **Open** if the module should be unsecured (no password) or **WPA2** to choose a password clients must use to connect to the module.
 - Client – should match the access point’s security mode .

Example:

If connecting to a router that uses WPA2 security, the security mode should be set to WPA2.

 - Passphrase (not shown, WPA2 only):
 - Server – passphrase must be entered when connecting to the Wi-Fi module.
 - Client – passphrase used when connecting to the access point.
7. Press . A warning popup displays.

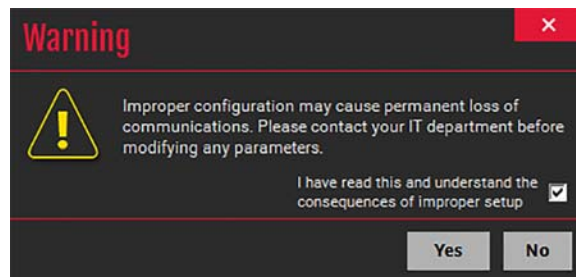


Figure 4. Configuration Warning

8. To accept the parameters, check the *I have read...* box and press .



© Rice Lake Weighing Systems Specifications subject to change without notice.
Rice Lake Weighing Systems is an ISO 9001 registered company.

230 W. Coleman St. • Rice Lake, WI 54868 • USA
U.S. 800-472-6703 • Canada/Mexico 800-321-6703 • International 715-234-9171 • Europe +31 (0)26 472 1319