

# Rice Lake Weighing Systems SQL Database

## Migrating a SQL Database to Another Machine

**Product:** OnTrak<sup>®</sup>, WeighVault<sup>®</sup> and other Rice Lake Weighing Systems software packages.

**Issue:** Transferring a Rice Lake Weighing Systems program Microsoft<sup>®</sup> SQL (MSSQL) database and to an instance of SQL.

**Solution:** Back up the current MSSQL database and transfer to another machine.



Manuals and additional resources are available from Rice Lake Weighing Systems at [www.ricelake.com/manuals](http://www.ricelake.com/manuals)

Warranty information can be found at [www.ricelake.com/warranties](http://www.ricelake.com/warranties)

### Save and Restore Database Files

1. Create a backup file of the current MSSQL database using the backup and restore utility.



**NOTE: SSMS and the backup and restore utility are included in the software package and have their own instructions within those packages' manuals or help files.**

2. Save the backup file (.bak) to a temporary location for future retrieval.
3. Install the Rice Lake Weighing Systems software package on new machine.
4. Install SQL Server Management Studio (SSMS) software package onto the new machine.



**NOTE: To download the SSMS software package, go to <https://docs.microsoft.com/sql/ssms>.**

5. Open SMSS on the new machine.
6. In SSMS, select **Databases** and right-click on the saved database to restore.
7. Navigate to Tasks> Restore> Database.

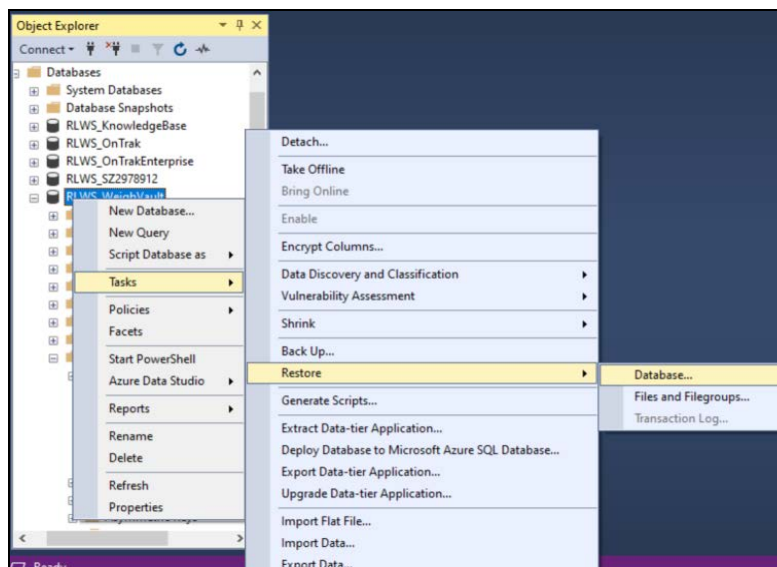
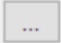


Figure 1. Database Restore

8. Under Source, select **Device** and click the ellipsis button  on the right. The Select Backup Device window will open.
  - a. Select **Add**.
  - b. Locate the .bak file saved in [Step 2](#).
  - c. Select **OK**.
  - d. A message will pop up stating that the selected database has been installed. Select **OK**.

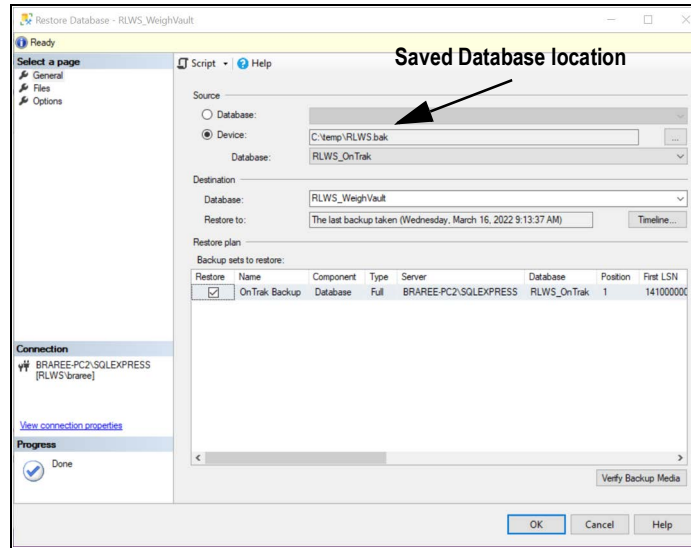


Figure 2. Select Backup Device Window

9. Select **Options** in the **Select a Page** column.
10. Select **Overwrite the existing database (WITH REPLACE)** and **Close existing connections to destination database select**.
11. Select **OK**.

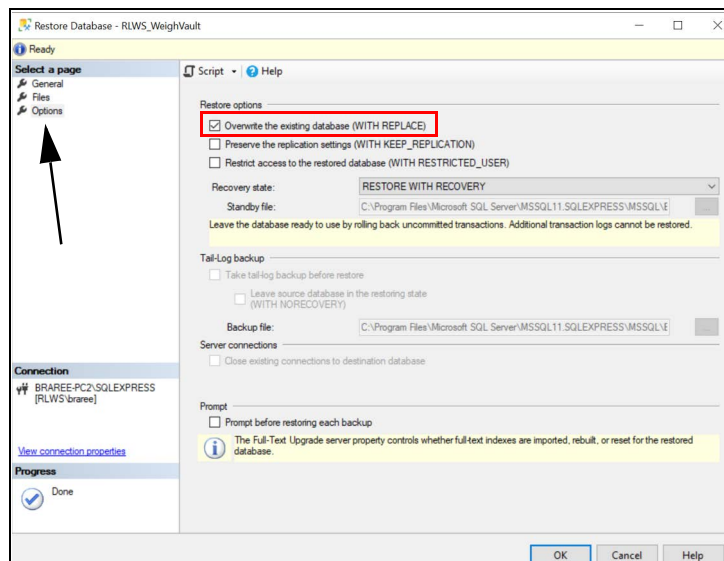


Figure 3. Options Page

12. A message will open stating that the database has successfully been restored.
13. Select **OK**.

## Authenticated User Replacement

1. Delete existing *ApplicationUserName* (e.g. WEIGHVAULT\_USER) from object explorer.



**NOTE:** Record *ApplicationUserName* for future use.

- a. Navigate to Security> Users> WEIGHVAULT\_USER.
- b. Right-Click WEIGHVAULT\_USER.
- c. Select **Delete**.

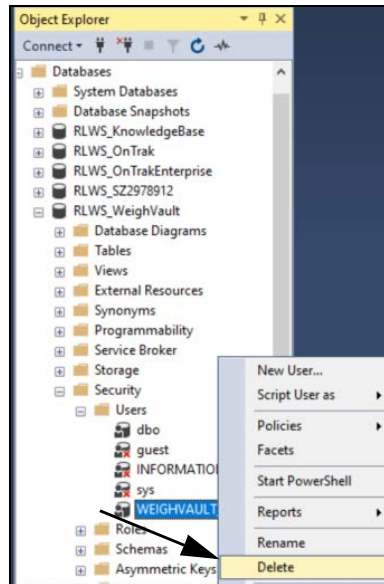


Figure 4. Authenticated User Deletion Path

2. Right-click the **Users** folder.
3. Select **New User**.

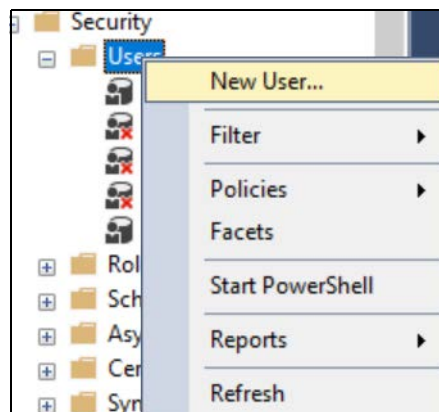


Figure 5. New User Selection

4. Select the ellipsis button  next to Login name.

5. Enter the name in the **Enter the object names to select (examples):** box.

 **NOTE:** Use *ApplicationUserName* recorded in previous step.

6. Select **Check Names**.
7. Check the matching object name and select **OK**.

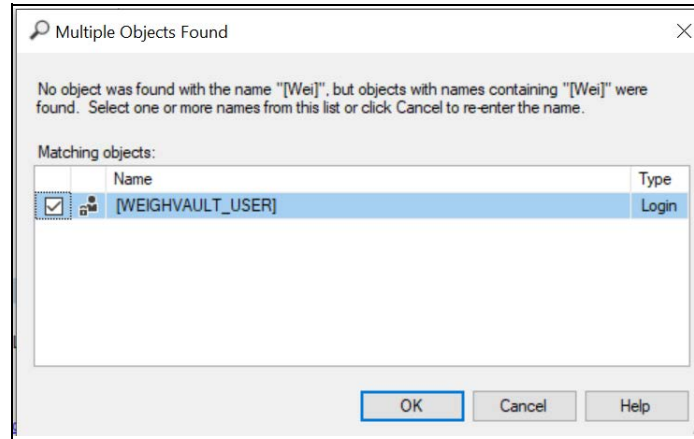


Figure 6. Name Selection

8. Input the **User Name** and the **Login Name**.

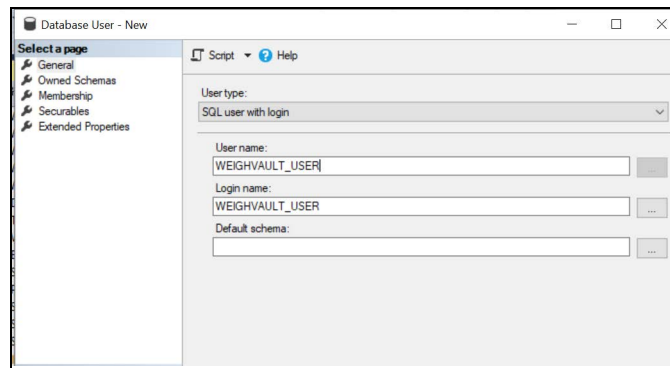


Figure 7. User Name Input

 **NOTE:** The *User Name* and *Login Name* must match.

9. Select **Membership** from the **Select a page** column.
10. Check **db\_datareader** and **db\_datawriter**.

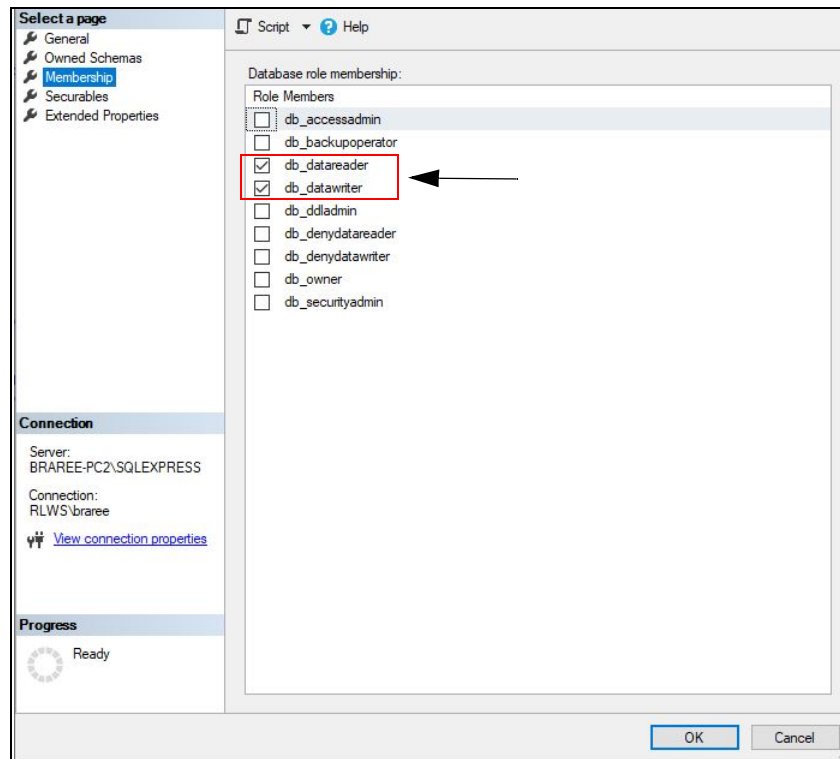


Figure 8. Membership Role Selection

11. Select **OK**.
12. Close SSMS.



© Rice Lake Weighing Systems Specifications subject to change without notice.

230 W. Coleman St. • Rice Lake, WI 54868 • USA  
U.S. 800-472-6703 • Canada/Mexico 800-321-6703 • International 715-234-9171 • Europe +31 (0)26 472 1319