

TE Series Tuning Fork Balance

Ethernet Option Installation

The Ethernet Option (PN 186079) provides an RJ-45 port for Ethernet output communication from the TE Series Balance. This document describes the installation procedures and communication settings for the Ethernet Option.

IMPORTANT

To ensure safe and proper use of the balance, completely read this documentation and the TE Series Operation Manual (PN 185193) before use. Store both documents in a safe place near the balance to review as needed.



Manuals and additional resources are available from the Rice Lake Weighing Systems website at www.ricelake.com
Warranty information can be found on the website at www.ricelake.com/warranties

Unpacking and Option Parts

Immediately after unpacking, visually inspect and ensure all components are included and undamaged. If parts were damaged in shipment, notify Rice Lake Weighing Systems and the shipper immediately.

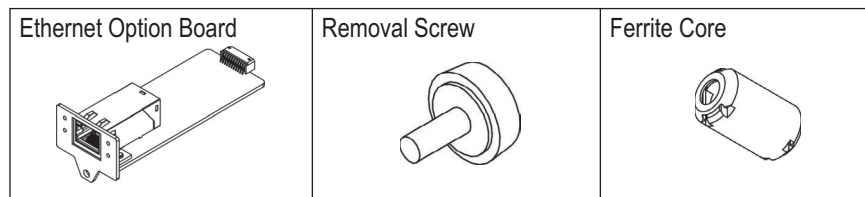


Figure 1. Ethernet Option Parts Illustration

Option Installation



Make sure that the power is disconnect before installation of the Ethernet Option.

1. Remove the screw securing the option slot cover and remove the option slot cover.

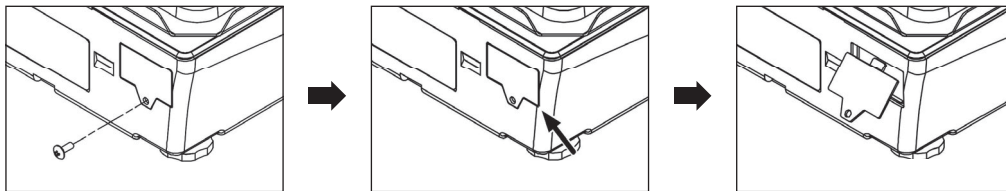


Figure 2. Remove Option Slot Cover

2. Insert the option board along the rail of the option slot until surface of the option faceplate is flush with the balance chassis within 0.5 mm.
3. Secure the option in place with the screw previously removed.

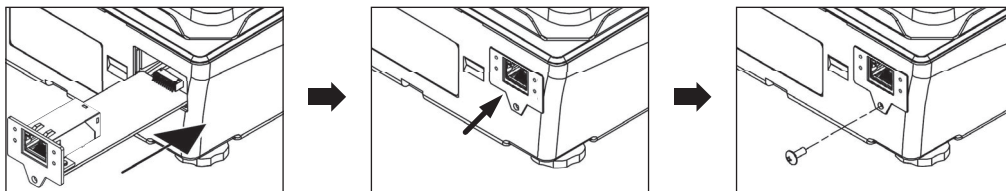


Figure 3. Insert and Secure Option



Use LAN cable of "CAT 5" or higher. When using a non-shielded LAN cable, attach the included ferrite core approximately 2" from the connector.

Communication Settings

The Ethernet Option board is equipped with “Xport” manufactured by Lantronix. Refer to the *External Input/Output Functions* and *Communications* sections in the TE Series Operation Manual (PN 185193) for information on settings and configuration.



Note “Baud Rate”, “Parity”, “Stop Bit”, and “Response Command” are associated to the internal communication between the balance and the Ethernet Option, not the external communications. If these settings have been changed, reconfigure them to the default values.

IP Address Setting

1. Download **DevicelInstaller** on a PC:
 - a. Go to the website: <https://www.lantronix.com/products/DevicelInstaller/>
 - b. Click **Download Software**.
 - c. Download the file name: **Stand-alone DevicelInstaller Setup application for Windows (125 MB)**
2. Install **DevicelInstaller** on PC.
3. Connect the balance to the network:
 - a. Connect the balance with the Switching Hub and power on the balance.
 - b. Through the PC’s Start Menu, go to “Lantronix” → “DevicelInstaller”.
 - c. Once **DevicelInstaller** is open, press **F1** on the keyboard to access the **DevicelInstaller** Help file.



Note The Ethernet Option MAC address is indicated on the faceplate of the option under the port.

Communication Specifications

Connector	RJ-45 (8P8C)
Interface	Ethernet 10Base-TX (auto-sensing)
Version	Version 2.0 / IEEE 802.3
Protocols	TCP/IP, UDP/IP, ARP, ICMP, SNMP, TFTP, Telnet, DHCP, BOOTP, HTTP, Auto IP
Management	Start bit Internal Web server, SNMP (read only), Serial login, Telnet login, Microsoft Windows-based utility for configuration
Security	Parity bit Password protection, Optional 256-bit AES Rijndael encryption

Option Removal



CAUTION Make sure that the power is disconnect before removal of the Ethernet Option.

1. Remove the screw securing the option.
2. Insert the removal screw to pull out the option from the balance.

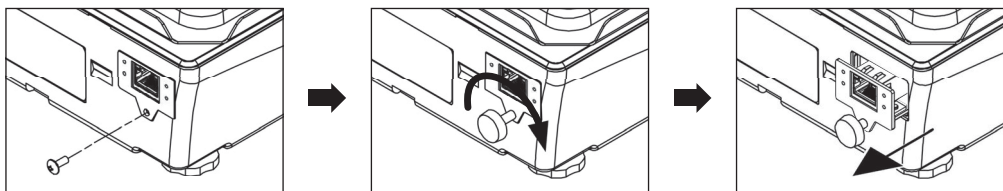


Figure 4. Option Removal



© Rice Lake Weighing Systems Specifications subject to change without notice.
Rice Lake Weighing Systems is an ISO 9001 registered company.

230 W. Coleman St. • Rice Lake, WI 54868 • USA
U.S. 800-472-6703 • Canada/Mexico 800-321-6703 • International 715-234-9171 • Europe +31 (0)26 472 1319