

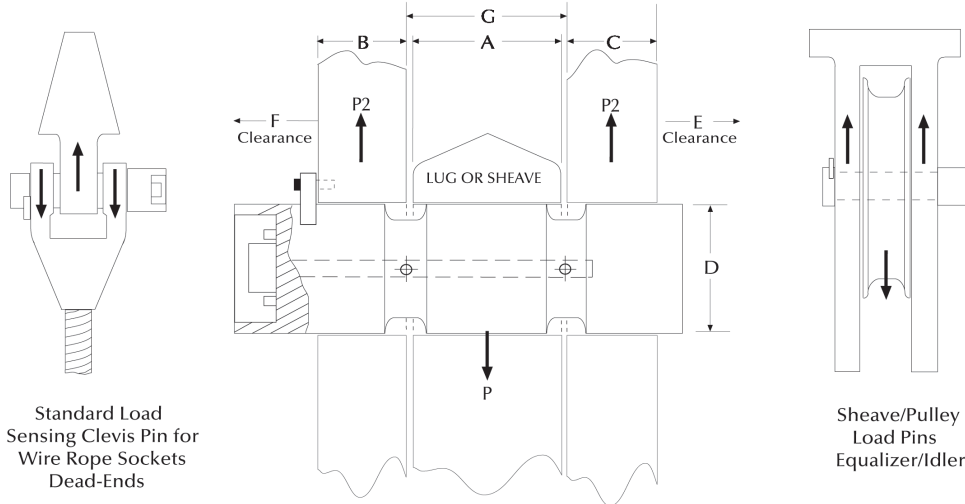
Load Pin Questionnaire

Name: _____

Company: _____

Phone: _____

LOAD PIN CRITICAL DIMENSIONS



A=Width	B=Width	C=Width	D=Diameter	E=Clearance	F=Clearance	G=Width
inch	inch	inch	inch	inch	inch	inch

NOTE: Minimum clearance between A and G is 0.0625 inch

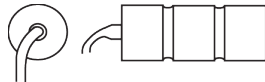
LOAD PIN DATA

Lube port: Yes No _____ # of exits
 Hoist capacity: _____ tons
 Parts of wire rope: _____
 Sensor capacity: _____ tons
 Safety factor: 3:1 5:1 7:1 10:1
 Application: _____

Accuracy requirement: _____
 Temperature requirement: _____
 Output requirement: _____
 Material testing requirements: _____
 Load vector orientation/alignment:
 ← → ↑ ↓

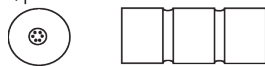
CABLE CONNECTIONS

End-mounted cable:



Sensor's cable length: _____ feet

End-mounted connector:
(standard)



Comments: _____

Side-mounted cable:



Side-mounted connector:



Recessed connector:



Form #0201 New 10/2024