

Pipe Lever Scale Questionnaire



Company _____

Name _____ Date _____

Phone _____ Fax _____ Email _____

	5K/10K Total Load*		25K Total Load*		30K Total Load*		40K/60K Total Load*	
	Standard	Minimum	Standard	Minimum	Standard	Minimum	Standard	Minimum
A	–	48.00 in	–	48.00 in	–	60.00 in	–	60.00 in
B	–	48.00 in	–	48.00 in	–	60.00 in	–	60.00 in
C	12.25 in	4.50 in	15.50 in	7.00 in	15.62 in	7.00 in	18.00 in	7.00 in
D	6.00 in	6.00 in	9.50 in	8.75 in	9.50 in	8.75 in	13.00 in	12.00 in
E	6.00 in	6.00 in	9.50 in	8.75 in	9.50 in	8.75 in	13.00 in	12.00 in
F	8.62 in	8.62 in	13.56 in	13.56 in	13.81 in	13.81 in	18.18 in	18.18 in
G	4.50 in	3.50 in	6.50 in	4.75 in	6.50 in	4.75 in	9.25 in	6.50 in
H	4.50 in	3.50 in	6.50 in	4.75 in	6.50 in	4.75 in	9.25 in	6.50 in
J	24.00 in	24.00 in	32.25 in	32.25 in	32.25 in	32.25 in	37.25 in	37.25 in

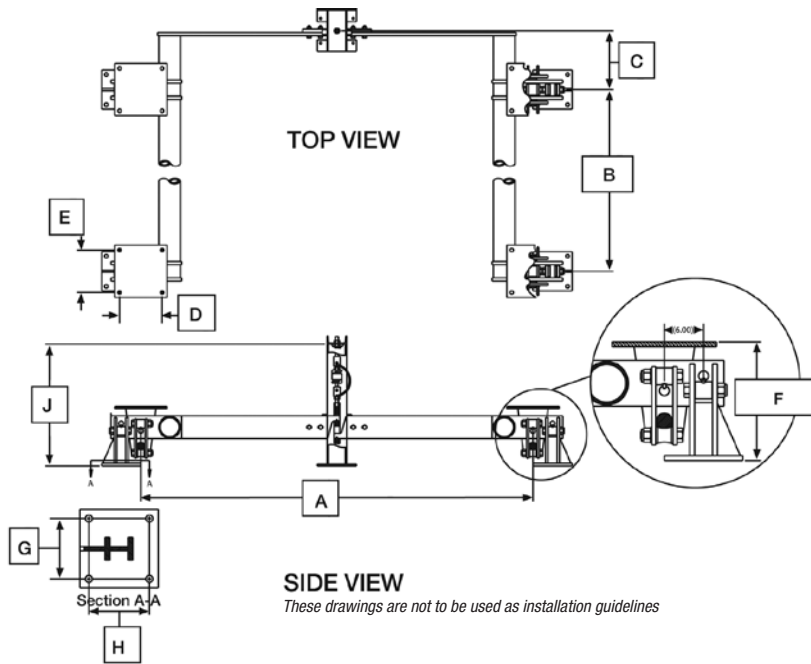
A x B must be equal to or less than 64 square feet. If, over consult factory.

* Live and dead load

A x B must be equal to or less than 100 square feet. If, over consult factory.

A x B must be equal to or less than 100 square feet. If, over consult factory.

A x B must be equal to or less than 100 square feet. If, over consult factory.



A	
B	
C	
D+	
E+	
F	
G**	
H**	
J	

** Stand hole dimensions +Chair hole dimensions.

SIDE VIEW

These drawings are not to be used as installation guidelines

Capacity: 5K 10K 25K 30K 40K 50K 60K

Material: Stainless Steel Mild Steel

NTEP Required: Yes No

Finish: _____

Load Cell: Mild Steel Stainless Steel Hermetically Sealed
Model _____ Model _____

Form #0652 New 08/2021