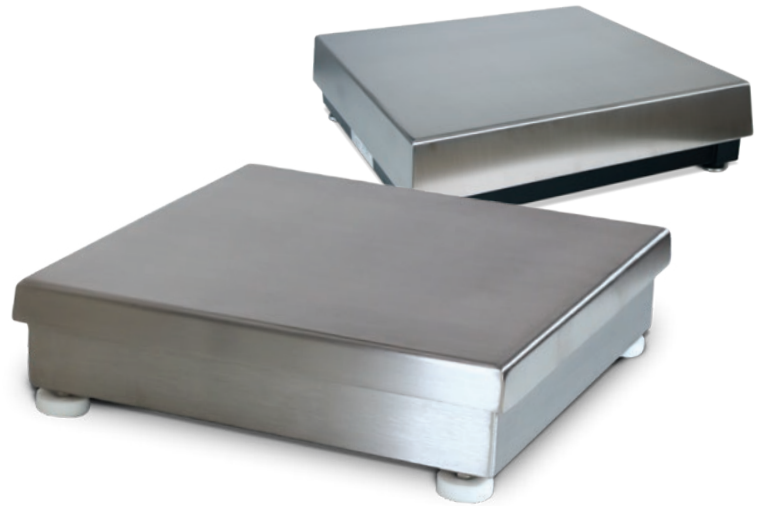


BenchMark[®]

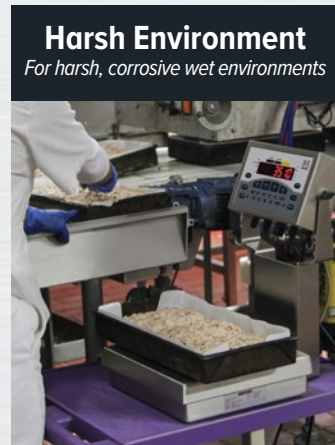
BENCH SCALES



RICE LAKE[®]
WEIGHING SYSTEMS

800-472-6703

www.ricelake.com



The Bench Scale for Every Task

The BenchMark® Series performs with durability for a wide variety of applications. This definitive bench scale series is offered with a broad range of finishes, sizes and capacities, and all are Legal for Trade. The BenchMark Series can also be customized to meet unique application requirements for a perfect fit at any site.

Powerful Weighing Systems

Pairing a BenchMark bench scale with one of Rice Lake's digital weight indicators completes a custom-built weighing system capable of basic, complex or specialized tasks. Create a reliable, washdown-ready static checkweigher by combining the CW-90XB bench scale with Rice Lake's CW-90X digital weight indicator and indicator column.



Simplified Data Management



WeighVault® software for the CW-90 and CW-90X checkweighers simplifies data entry, storage and reporting. Operators can easily access productivity and transaction reports to review data including number of weighments, average weight, target values, transaction dates and more.



Myrias™ is an easy-to-use data management software with options for static checkweighing, batch recipe formulation, offline sampling and more—all with easy-to-read reports. Myrias can help prevent batching errors, increase production efficiency and provide lot tracing to simplify business processes.

Scale Carts to Fit Your Process

The Benchmark MSC mobile scale carts are ideal for applications where portability is necessary. The MSC is available in stainless or mild steel and is designed with two rigid and two swivel casters with locking wheel brakes. Several styles are available to ensure scales are at a comfortable working height. With a sturdy column to mount the weight indicator, weight readings are easily viewable to the operator. If standard cart or indicator columns heights don't fit your needs, Rice Lake can create custom solutions.





Light Capacity

The CW-90B or CW-90XB, when paired with a CW-90/90X digital weight indicator, are ideal for checkweighing applications. Both models in this subgroup are constructed of 304 stainless steel, and have NTEP, FM, Measurement Canada and NSF certification. Pair these scales with a CW-90/90X digital weight indicator to create a complete weighing solution with NSF certification.

CW-90B

The CW-90B is constructed of 304 stainless steel and includes an aluminum, environmentally sealed load cell.

Load Cell: Aluminum IP67, cFMus Approved

Sizes: 10 x 10 inches to 12 x 12 inches

Capacities: 5 pounds to 100 pounds

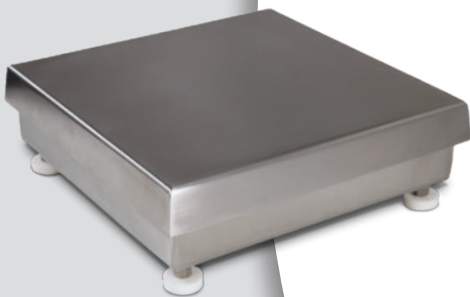
Construction: 304 Stainless Steel Frame and Top Cover

Foot Construction: 304 Stainless Steel Threaded Stem with Rubber Bottom

Overload Protection: Five-point Overload Protection



Measurement
Canada
Approved



CW-90XB

The CW-90XB is engineered according to sanitary design principles (SDP) by reducing areas that hide bacteria and pathogens, and with features that allow ease in extreme sanitation.

Load Cell: Stainless Steel IP69K, cFMus Approved

Sizes: 10 x 10 inches to 12 x 12 inches

Capacities: 5 pounds to 100 pounds

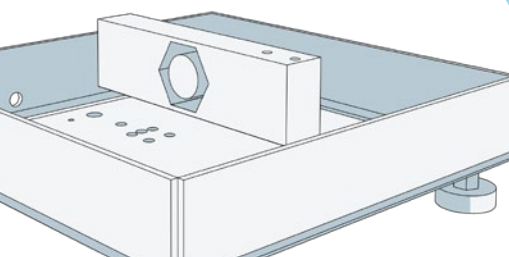
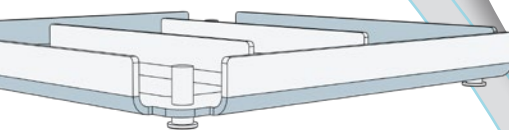
Construction: 304 Stainless Steel Frame and Top Cover

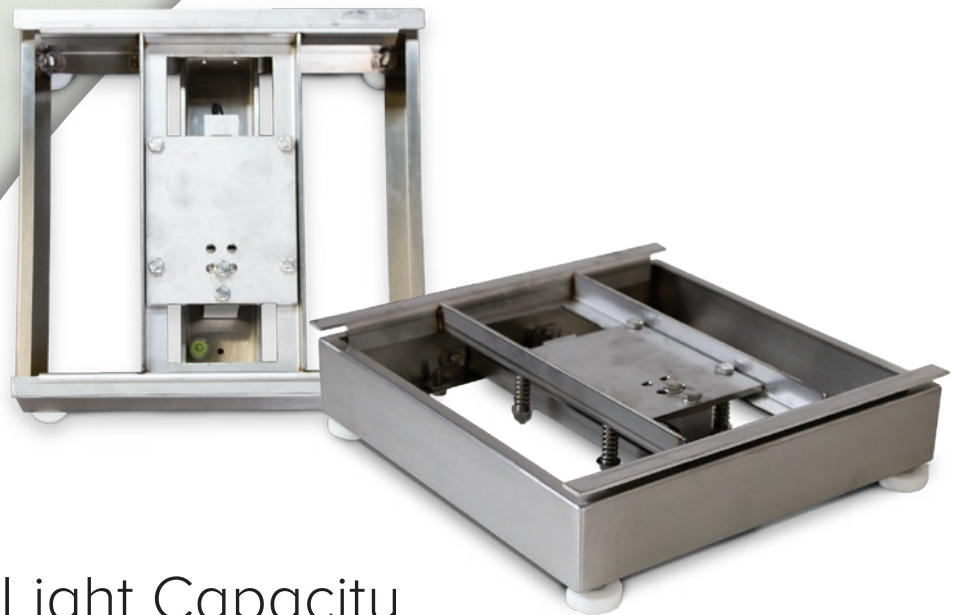
Foot Construction: 304 Stainless Steel Threaded Stem with Rubber Bottom

Overload Protection: Five-point Overload Protection



Measurement
Canada
Approved





Light Capacity Spring Loaded

The BenchMark SL, CW-80B and SLHE bench scales feature a spring loaded, LifeGuard™ design that isolates the load cell from overloads and shock loads, providing additional endurance and utility to light industrial weighing jobs.

BenchMark SL

The BenchMark SL is constructed of 304 stainless steel and comes with an aluminum, environmentally sealed load cell.

Load Cell: Aluminum, IP66, cFMus Approved

Sizes: 10 x 10 inches to 12 x 12 inches

Capacities: 2 pounds* to 100 pounds

Construction: 304 Stainless Steel

Foot Construction: 304 Stainless Steel Threaded Stem with Rubber Bottom

Overload Protection: Lifeguard® springs



Measurement
Canada
Approved



FM
APPROVED

**2 pound scale is non-NTEP Approved*

BenchMark CW-80B

An ideal scale base for checkweighing applications.

Load Cell: Stainless Steel IP67, FM Approved

Sizes: 10 x 10 inches to 12 x 12 inches

Capacities: 6 pounds to 60 pounds

Construction: 304 Stainless Steel

Foot Construction: 304 Stainless Steel Threaded Stem with Rubber Bottom

Overload Protection: Lifeguard® springs



Measurement
Canada
Approved



FM
APPROVED

BenchMark SL/HE

The BenchMark spring loaded, hostile environment bench scale.

Load Cell: Stainless Steel IP69K, FM Approved

Sizes: 10 x 10 inches to 12 x 12 inches

Capacities: 30 pounds to 100 pounds

Construction: 304 Stainless Steel

Foot Construction: 304 Stainless Steel Threaded Stem with Rubber Bottom

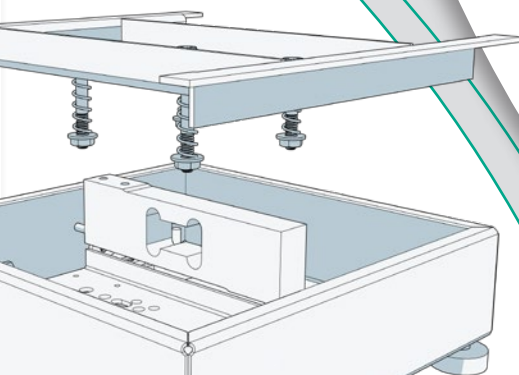
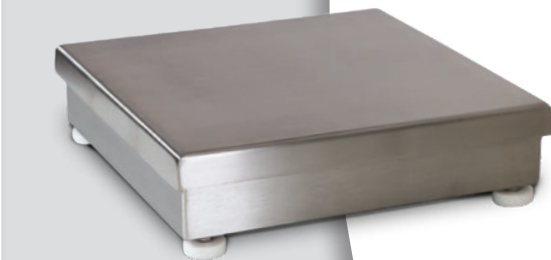
Overload Protection: Lifeguard® springs



Measurement
Canada
Approved



FM
APPROVED





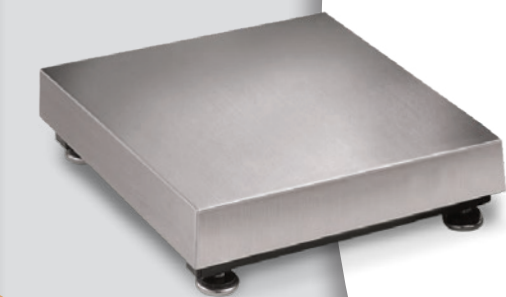
Medium to High Capacity

BenchMark medium-to high-capacity bench scales are offered in a number of models, for choices capable of handling heavy loads while still fitting perfectly into the work space where it is needed.

BenchMark Mild Steel

Finished with a painted, mild steel tubular frame and 304 stainless steel cover, this model features aluminum, environmentally sealed load cells.

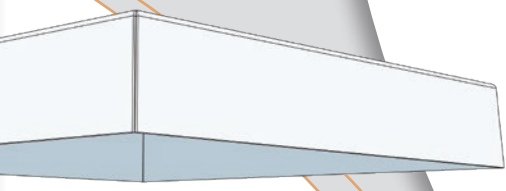
- Load Cell:** Aluminum IP67, cFMus Approved
- Sizes:** 12 x 12 inches to 24 x 24 inches
- Capacities:** 30 pounds to 1,000 pounds
- Construction:** Painted Mild Steel Tubular Frame with 304 Stainless Steel Top Cover
- Foot Construction:** 304 Stainless Steel Threaded Stem with Stainless Steel Bottom
- Overload Protection:** Five-point Overload Protection



BenchMark Stainless Steel

With a 304 stainless steel cover and tubular frame, these models include load cells that are constructed of aluminum with environmentally sealed protection.

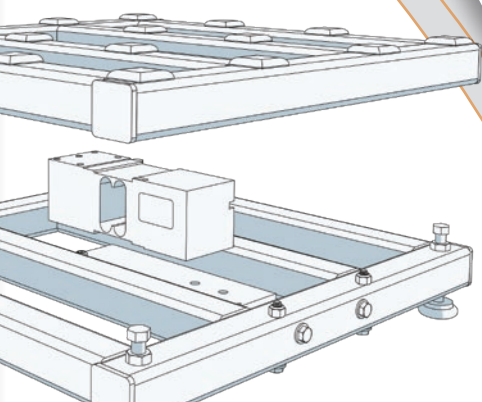
- Load Cell:** Aluminum IP67, FM Approved
- Sizes:** 12 x 18 inches to 24 x 24 inches
- Capacities:** 50 pounds to 1,000 pounds
- Construction:** 304 Stainless Steel Tubular Frame and Top Cover
- Foot Construction:** 304 Stainless Steel Threaded Stem with Stainless Steel Bottom
- Overload Protection:** Five-point Overload Protection



BenchMark HE

This hostile environment bench scale is made with a 304 stainless steel cover and tubular frame and includes a hermetically sealed, IP69K protected, stainless steel load cell.

- Load Cell:** Stainless Steel IP69K, FM Approved
- Sizes:** 12 x 18 inches to 24 x 24 inches
- Capacities:** 50 pounds to 1,000 pounds
- Construction:** 304 Stainless Steel Tubular Frame and Top Cover
- Foot Construction:** 304 Stainless Steel Threaded Stem with Stainless Steel Bottom
- Overload Protection:** Five-point Overload Protection

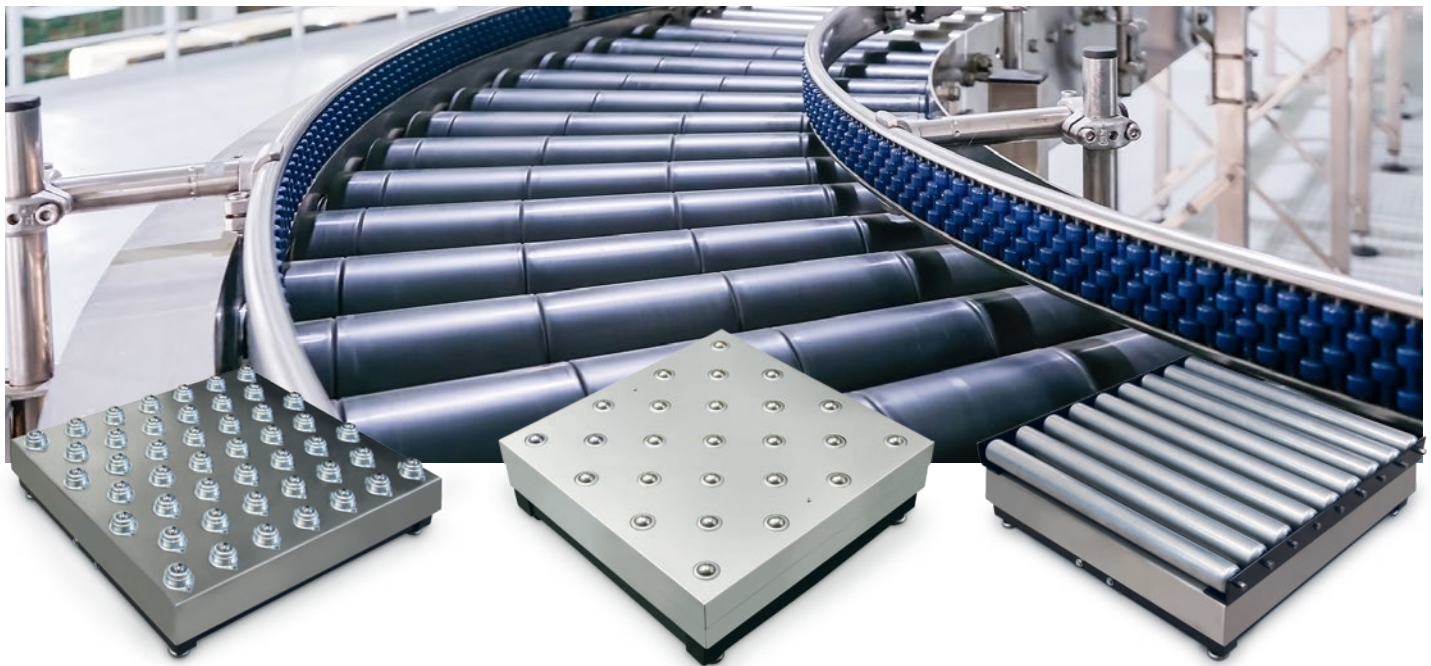


BenchMark®

BENCH SCALES

Don't Fight Physics, Move Products

Experience true efficiency by selecting the right bench scale top for any of the BenchMark Series bench scale models. Add a rolling top surface to increase product mobility and ease operator effort for fast output speeds.



Ball Transfer Top

For bi-directional movement of boxes or products, customize the ball transfer top by ordering specific center distances between transfer balls, depending on the size of the objects to be weighed.

Ball Transfer with Shroud

The transfer balls are shrouded so they do not protrude above the scale surface as prominently as the standard ball transfer top. The shroud helps to keep small boxes and items in the same plane of travel, so they cannot fall or get caught in the area between ball transfers.

Roller Conveyor

This option allows uni-directional movement with sturdy rollers on the surface of the scale. Align the direction of rollers with either the long or short sides of the scale, if the scale is rectangular.

SALES AND TECHNICAL ASSISTANCE

RICE LAKE®
WEIGHING SYSTEMS

HEADQUARTERS
230 West Coleman Street
Rice Lake, Wisconsin 54868 - USA
Tel: (715) 234 9171 | Fax: (715) 234 6967
www.ricelake.com