



Desktop Printers

G500 Series

High-Tech Power with a Customer Friendly Price

"Twin-Sensor Technology" makes the G500 perfect for printing on all types of specialty materials especially for retail and industrial applications



300 meter ribbon plus the optional label stand provides maximum printing volume

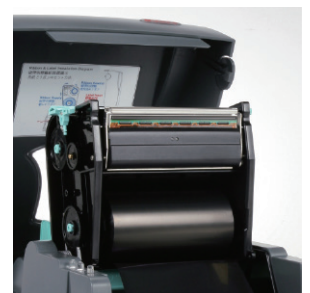


"Twin-Sensor" technology allows you to use a broad range of labels



Available interface combinations include:

- USB2.0, Serial and Ethernet
- USB2.0 and Parallel



Strong and stable mechanism design for long term reliability

GoDEX



G500 Series Printer Specification

Model	G500	G530
Print Method	Thermal Transfer / Direct Thermal	
Resolution	203 dpi (8 dots/mm)	300 dpi (12 dots/mm)
Print Speed	5 IPS (127 mm/s)**	4 IPS (102 mm/s)**
Print Width	4.25" (108 mm)	4.16" (105.7 mm)
Print Length	Min. 0.16" (4 mm)** Max. 68" (1727 mm)	Min. 0.16" (4 mm)** Max. 30" (762 mm)
Processor	32 Bit RISC CPU	
Memory	8MB Flash (4MB for user storage) ; 16MB SDRAM	
Sensor Type	Adjustable reflective sensor 2 fixed transmissive sensors, central aligned	
Media	Types : Continuous form, gap labels, black mark sensing, and punched hole; label length set by auto sensing or programming Width : 1" (25.4 mm) Min. - 4.64" (118 mm) Max. Thickness : 0.0024" (0.06 mm) Min. - 0.01" (0.25 mm) Max.** Label Roll Diameter : Max. 5" (127 mm) Core Diameter : 1" (25.4 mm), 1.5" (38.1mm), 3" (76.2mm)	
Ribbon	Types : Wax, wax / resin, resin Length : 981' (300 m) Width : 1.18" Min. - 4.33" (30 mm - 110 mm) Max. Ribbon Roll Diameter : 2.67" (68 mm) Core Diameter : 1" (25.4 mm)	
Printer Language	EZPL, GEPL, GZPL, GDPL auto switch	
Software	Label design software: GoLabel II (for EZPL only) (Windows) Driver: Windows 7, Windows 8 & 8.1, Windows 10, Windows 11, Windows Server 2008 R2, 2012, 2012 R2, 2016, 2019, 2022, MAC, Linux SDK: Win CE, .NET, Windows 7, Windows 8 & 8.1, Windows 10, Windows 11, Android, Mac, iOS	
Resident Fonts	Bitmap fonts: 6, 8, 10, 12, 14, 18, 24, 30, 16X26 and OCR A & B Bitmap fonts 0°, 90°, 180°, 270° rotatable, single characters 0°, 90°, 180°, 270° rotatable Bitmap fonts 8 times expandable in horizontal and vertical directions TTF Fonts: TTF Fonts (Bold / Italic / Underline) . 0°, 90°, 180°, 270° rotatable	
Download Fonts	Bitmap fonts: 0°, 90°, 180°, 270° rotatable, single characters 0°, 90°, 180°, 270° rotatable Asian fonts: 16x16, 24x24. Traditional Chinese (BIG-5), Simplified Chinese (GB2312), Japanese (S-JIS), Korean (KS-X1001) 0°, 90°, 180°, 270° rotatable and 8 times expandable in horizontal and vertical directions TTF fonts: TTF Fonts (Bold / Italic / Underline) . 0°, 90°, 180°, 270° rotatable	
Barcodes	1-D Bar codes: China Postal Code, Codabar, Code 11, Code 32, Code 39, Code 93, Code 128 (subset A, B, C), EAN-8/EAN-13 (with 2 & 5 digits extension), EAN 128, FIM, German Post Code, GS1 DataBar, HIBC, Industrial 2 of 5, Interleaved 2-of-5 (I 2 of 5), Interleaved 2-of-5 with Shipping Bearer Bars, ISBT-128, ITF 14, Japanese Postnet, Logmars, MSI, Postnet, Plessey, Planet 11 & 13 digit, RPS 128, Standard 2 of 5, Telepen, Matrix 2 of 5, UPC-A/UPC-E (with 2 or 5 digit extension), UCC/EAN-128 K-Mart and Random Weight 2-D Bar codes: Aztec code, Code 49, Codablock F, Datamatrix code, MaxiCode, Micro PDF417, Micro QR code, PDF417, QR code, TLC 39, GS1 Composite	
Code Pages	Codepage 437, 737, 850, 851, 852, 855, 857, 860, 861, 862, 863, 865, 866, 869 Windows 1250, 1251, 1252, 1253, 1254, 1255, 1257 Unicode UTF8 \ UTF16BE \ UTF16LE	
Graphics	Resident graphic file types are BMP and PCX, other graphic formats are downloadable from the software	
Interfaces	<ul style="list-style-type: none"> · USB 2.0 · USB 2.0 · USB 2.0 · USB 2.0 · Serial port: RS-232 (DB-9) · Serial port: RS-232 (DB-9) · IEEE 802.3 10/100 Base-Tx · IEEE 802.3 10/100 Base-Tx Ethernet port (RJ-45) Ethernet port (RJ-45) 	
RTC	N/A	
Control Panel	Two bi-color status-LEDs: Ready, Status Control key: FEED	
Power	Auto Switching 100-240VAC, 50-60Hz.	
Environment	Operation temperature: 41°F to 104°F (5°C to 40°C) Storage temperature: -4°F to 122°F (-20°C to 50°C)	
Humidity	Operation: 30-85%, non-condensing. Storage: 10-90%, non-condensing.	
Agency Approvals	CE (EMC), FCC Class A, CB, CCC, cUL, KCC, BIS, EAC, UKCA	
Dimension	Length : 11.2" (285 mm) Height : 6.8" (171 mm) Width : 8.9" (226 mm)	
Weight	5.51 lbs (2.5 Kg), excluding consumables	
Accessory	Cutter Label Dispenser External label roll holder for 10" (250 mm) O.D. label rolls External label rewinder	

*Specifications are subject to change without notice. All company and/or product names are trademarks and/or registered trademarks of their respective owners.

**Minimum print height and maximum print speed specification compliance can be dependent on non-standard material variables such as label type, thickness, spacing, liner construction, etc. GoDEX is pleased to test non-standard materials for minimum print height, and maximum print speed capability.

Applications

Applications for Labels & Barcodes

G500 series is your best friend for getting the job done instantly.



Retail

Price tags, content labels, receipts for registered mails, postage labels, etc.

Warehouses, Logistic & Transportation

Case pack labels, address labels, product serial number labels, inventory management, shipping labels, or related industrial applications.

Administration

ID cards, document and records management, access control management, library management & organization and classification system, ISBN application, etc.

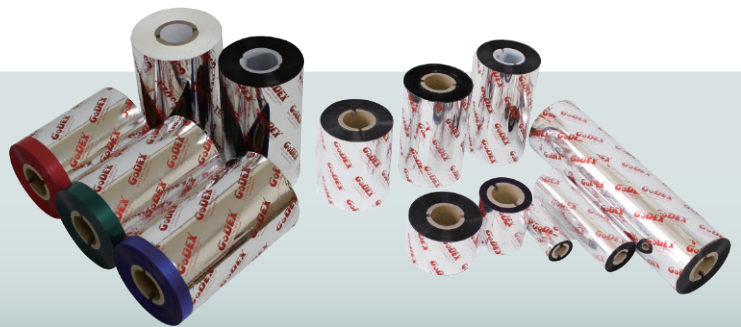
GoDEX

RIBBONS

High quality original GoDEX thermal transfer ribbons

GoDEX offers premium thermal transfer ribbons that will fit most of your printing applications.

- Wax
- Wax/ Resin
- Resin
- Near Edge



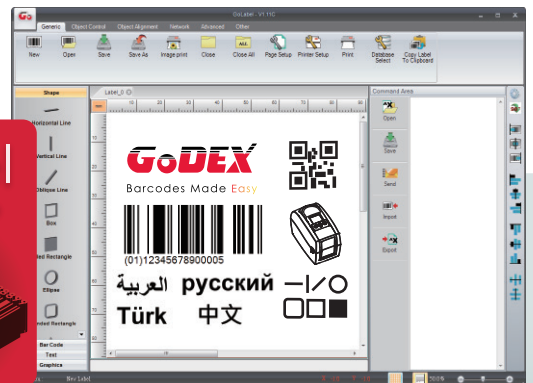
GoDEX

LABEL DESIGN SOFTWARE

GoLabel Software / User Friendly

GoLabel is based on a WYSIWYG (what you see is what you get) user interface, makes everything so easy for you to create and print barcode labels. GoLabel is the first-choice label design software that you can't miss it!

Go visit www.godexintl.com and download GoLabel to experience it!



GoDEX
www.godexintl.com

Godex International
(Headquarters)
Telephone : +886 2 2225 8580
Contact us : infoGT@godexintl.com

Godex Americas
Telephone : +1 805 987 5100
Contact us : infoGA@godexintl.com

Godex China
Telephone : +86 21 56651313
Contact us : infoGC@godexintl.com

Godex Europe
Telephone : +49 2195 59599 0
Contact us : infoGE@godexintl.com