



Industrial Printers

## ZX400+/ ZX400i+ Series

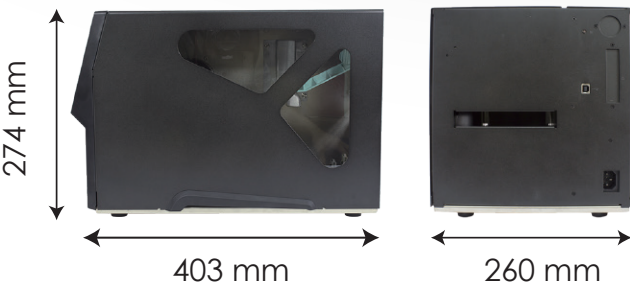
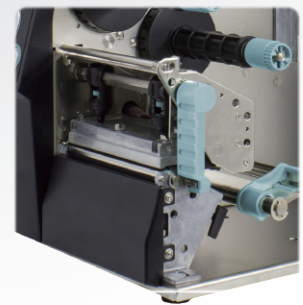


### Power & Precision in One Compact Design

Small in size and powerful in performance. Upgraded Flash and SDRAM enable the ZX400(i)+ series to withstand more difficult printing conditions. Multiple interfaces and optional WiFi & Bluetooth connections make the ZX400(i)+ suitable for most application environments.

#### Die-Cast Printing Mechanism

The ZX400(i)+ printing mechanism is made with a diecast design, providing strong durability and making it capable of long term label printing requirements.

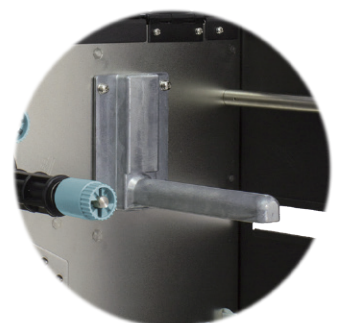


#### Small Footprint

403 mm (Length) x 260 mm (Width)  
small footprint with industrial efficiency;  
ideal for users who need to consider  
the use of space.



#### 1 Inch Label Roll Holder

The strong die-cast label roll holder can support a 1 inch label core, allowing “desktop” printer users to operate the ZX400(i)+ series without having to purchase another type of label.



# Specification

2023/01/03

<b>Model</b>				
	ZX420+	ZX430+	ZX420i+	ZX430i+
<b>Print Method</b>	Thermal Transfer / Direct Thermal			
<b>Resolution</b>	203 dpi (8 dots/mm)	300 dpi (12 dot/mm)	203 dpi (8 dots/mm)	300 dpi (12 dot/mm)
<b>Print Speed</b>	Up to 6 ips (152 mm/s)	Up to 4 ips (102 mm/s)	Up to 6 ips (152 mm/s)	Up to 4 ips (102 mm/s)
<b>Print Width</b>	4.25" (108 mm)	4.16" (105.7 mm)	4.25" (108 mm)	4.16" (105.7 mm)
<b>Print Length</b>	Min. 0.16" (4 mm)** ; Max . 279.53" (7100 mm)	Min. 0.16" (4 mm)** ; Max. 125.98" (3200 mm)	Min. 0.16" (4 mm)** ; Max . 279.53" (7100 mm)	Min. 0.16" (4 mm)** ; Max. 125.98" (3200 mm)
<b>Processor</b>	32 Bit RISC CPU			
<b>Memory</b>	<b>Flash</b>	128 MB		
	<b>SDRAM</b>	128 MB		
<b>Sensor Type</b>	Adjustable reflective sensor and transmissive sensor, left aligned			
<b>Media</b>	<b>Type</b>	Continuous form, gap labels, black mark sensing, and punched hole; label length set by auto sensing or programming		
	<b>Width</b>	Tear : Min. 1" (25.4 mm) – Max. 4.65" (118 mm) Cutter : Max. 4.61" (117 mm) Dispenser : Max. 4.33" (110 mm)		
	<b>Thickness</b>	Min. 0.0024" (0.06 mm) – Max. 0.01" (0.25 mm)		
	<b>Label roll diameter</b>	Max. 8" (203.2 mm) with 3" (76.2 mm) core Max. 6" (152.4 mm) with 1.5" (38.1 mm) core Max. 5" (127 mm) with 1" (25.4 mm) core		
	<b>Core diameter</b>	Min. 1" (25.4 mm) – Max. 3" (76.2 mm)		
<b>Ribbon</b>	<b>Types</b>	Wax, wax/resin, resin		
	<b>Length</b>	Max. 1476' (450 m)		
	<b>Width</b>	Min. 1.18" (30 mm) – Max. 4.33" (110 mm)		
	<b>Ribbon roll diameter</b>	3" (76.2 mm)		
	<b>Core diameter</b>	1" (25.4 mm)		
<b>Printer Language</b>	EZPL, GEPL, GZPL, GDPL auto switch			
<b>Software</b>	<b>Label design tool</b>	GoLabel II (for EZPL only) (Windows)		
	<b>Management tools</b>	GoTools (Windows / Android) GoUtility (Windows)		
	<b>APP</b>	GoAPP (Android / iOS)		
<b>Driver</b>	Windows 7, Windows 8 & 8.1, Windows 10, Window11, Windows Server 2008 R2, 2012, 2012 R2, 2016, 2019, 2022, MAC, Linux			
<b>SDK</b>	Win CE, .NET, Windows 7, Windows 8 & 8.1, Windows 10, Windows 11, Android, Mac, iOS			
<b>Resident Fonts</b>	<b>Bitmap fonts</b>	6, 8, 10, 12, 14, 18, 24, 30, 16X26 and OCR A & B 0°, 90°, 180°, 270° rotatable, single characters 0°, 90°, 180°, 270° rotatable 8 times expandable in horizontal and vertical directions		
	<b>TTF Fonts</b>	(Bold / Italic / Underline) 0°, 90°, 180°, 270° rotatable Internal TTF Fonts x5 : Traditional Chinese, Simplified Chinese, Japanese, Korean, Western languages		

<b>Download Fonts</b>	<b>Bitmap fonts</b>	0°, 90°, 180°, 270° rotatable, single characters 0°, 90°, 180°, 270° rotatable	
	<b>Asian fonts</b>	16x16, 24x24. Traditional Chinese (BIG-5), Simplified Chinese(GB2312), Japanese(S-JIS), Korean (KS-X1001) 0°, 90°, 180°, 270° rotatable and 8 times expandable in horizontal and vertical directions	
	<b>TTF fonts</b>	(Bold / Italic / Underline) 0°, 90°, 180°, 270° rotatable	
<b>Barcodes</b>	<b>1-D Bar codes</b>	China Postal Code, Codabar, Code 11, Code 32, Code 39, Code 93, Code 128 (subset A, B, C), EAN-8/EAN-13 (with 2 & 5 digits extension), EAN 128, FIM, German Post Code, GS1 DataBar, HIBC, Industrial 2 of 5, Interleaved 2-of-5 (I 2 of 5), Interleaved 2-of-5 with Shipping Bearer Bars, ISBT-128, ITF 14, Japanese Postnet, Logmars, MSI, Postnet, Plessey, Planet 11 & 13 digit, RPS 128, Standard 2 of 5, Telepen, Matrix 2 of 5, UPC-A/UPC-E (with 2 or 5 digit extension), UCC/EAN-128 K-Mart, Random Weight and Pharmacode	
	<b>2-D Bar codes</b>	Aztec code, Code 49, Codablock F, Datamatrix code, MaxiCode, Micro PDF417, Micro QR code, PDF417, QR code, TLC 39, GS1 Composite, DotCode, Marco PDF 417	
<b>Code Pages</b>	Codepage 437, 737, 850, 851, 852, 855, 857, 860, 861, 862, 863, 865, 866, 869 Windows 1250, 1251, 1252, 1253, 1254, 1255, 1257 Unicode UTF8 \ UTF16BE \ UTF16LE		
<b>Graphics</b>	Resident graphic file types are BMP and PCX, other graphic formats are downloadable from the software		
<b>Interfaces</b>	<ul style="list-style-type: none"> <li>• USB 2.0 (Type B)</li> <li>• USB Host (Type A)</li> </ul>	<ul style="list-style-type: none"> <li>• USB 2.0 (Type B)</li> <li>• Serial Port (RS232)</li> <li>• Ethernet 10/100 Mbps</li> <li>• USB Host (Type A)</li> </ul>	
<b>Real Time Clock</b>	Standard		
<b>Control Panel</b>	<ul style="list-style-type: none"> <li>• 1 Power on/ standby button with green color LED backlight</li> <li>• 1 Calibration button at rear panel</li> <li>• 1 Control key : FEED / PAUSE / CANCEL with dual color LED backlight : Ready (Green); Error (Red)</li> </ul>	<ul style="list-style-type: none"> <li>• Color TFT LCD with navigation button</li> <li>• 1 Power on/standby button with green color LED backlight</li> <li>• 1 Calibration button at rear panel</li> <li>• 1 Control key : FEED / PAUSE / CANCEL with dual color LED backlight: Ready (Green); Error (Red)</li> </ul>	
<b>Power</b>	Auto Switching 100-240VAC, 50-60Hz.		
<b>Environment</b>	<b>Operation temperature</b>	41°F to 104°F (5°C to 40°C)	
	<b>Storage temperature</b>	-4°F to 140°F (-20°C to 60°C)	
<b>Humidity</b>	<b>Operation</b>	20-85%, non-condensing.	
	<b>Storage</b>	10-90%, non-condensing.	
<b>Agency Approvals</b>	CE (EMC) \ FCC Class B \ CB \ cULus \ ICES-003, UKCA, BSMI, ENERGY STAR ***		
<b>Dimension</b>	<b>Length</b>	403 mm (15.9" )	
	<b>Width</b>	260 mm (10.2" )	
	<b>Height</b>	274 mm (10.8" )	
<b>Weight</b>	10.8 Kg (23.81lbs), excluding consumables		
<b>Options</b>	Cutter module (Dealer Install) Parallel port adaptor module (Centronic female 36-pin) (Dealer Install) WiFi (IEEE 802.11 b/g/n) and BT (BLE 5.0) combo module (Dealer Install) External label rewinder Label Dispenser (Dealer Install)		

\* Specifications are subject to change without notice. All company and/or product names are trademarks and/or registered trademarks of their respective owners.

\*\* Minimum print height and maximum print speed specification compliance can be dependent on non-standard material variables such as label type, thickness, spacing, liner construction, etc. Godex is pleased to test non-standard materials for minimum print height, and maximum print speed capability.

\*\*\* The safety certification marks may be different depending on sales regions.

# Applications

## Applications for Labels & Barcodes

ZX400+/ZX400i+ Series is extremely versatile and can be used for most applications.



### Retail

price tags, content labels, receipts for registered mail, postage labels, etc.



### Warehouse

shelf labels, product labels, stocking management, exterior/pallet labeling, etc.



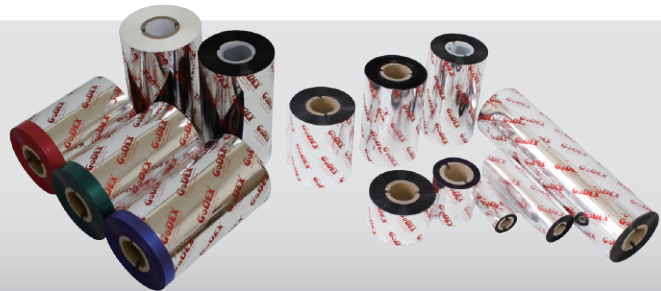
### Manufacturing

product labels, manufacturing labels, exterior/pallet labels, trade, stocking and document management, etc.

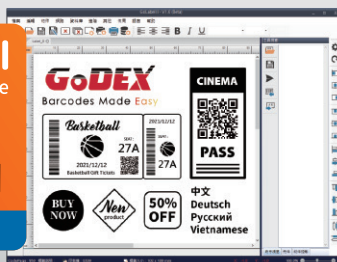
## GoDEX RIBBONS

Godex offers premium thermal transfer ribbons that will fit most of your printing applications.

- Wax
- Wax/ Resin
- Resin
- Near Edge



## GoDEX SOFTWARE



GoLabel II is based on a WYSIWYG (what you see is what you get) user interface, making everything so easy for users to create and print barcode labels.

GoLabel II is the first-choice in label design software, and all you need to start creating your own labels today!



Forget about installing complicated software, GoTools will show you the easiest way.



GoUtility can help users monitor GoDEX's printer status and deploy data to multiple printers through a concise user interface at the same time.