

MSI
Accessory Shackles



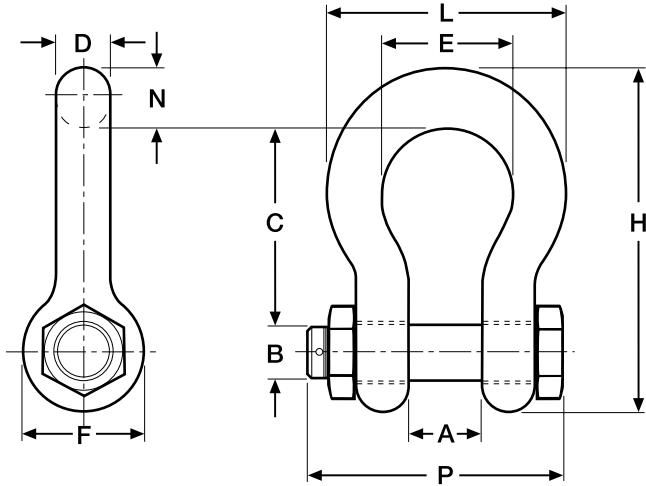
**Measurement Systems
International™**

A RICE LAKE WEIGHING SYSTEMS COMPANY

800-874-4320

www.msiscales.com

MSI ACCESSORY SHACKLES



Rice Lake Part Number	MSI Part Number	W.L.L. Tons	Size (inch)	A	B	C	D	Dimensions (inch)		H	L	N	P	Weight (lb)
								E	F					
151357	10541	3.25 ton	0.63 in	1.06 in	0.75 in	2.38 in	0.63 in	1.69 in	1.56 in	4.22 in	2.94 in	0.69 in	3.63 in	1.58 lb
151355	10538	6.5 ton	0.88 in	1.44 in	1.00 in	3.31 in	0.88 in	2.28 in	2.13 in	5.75 in	4.03 in	0.97 in	5.00 in	3.95 lb
141992	10539	17 ton	1.50 in	2.38 in	1.63 in	5.75 in	1.50 in	3.88 in	3.63 in	9.88 in	6.88 in	1.62 in	8.25 in	19.50 lb
151356	10540	25 ton	1.75 in	2.88 in	2.00 in	7.00 in	1.75 in	5.00 in	4.32 in	11.88 in	8.50 in	2.12 in	9.59 in	31.30 lb
146334	23650-0030	30 ton	1.50 in	2.38 in	1.63 in	5.75 in	1.50 in	3.88 in	3.63 in	9.88 in	6.88 in	1.62 in	8.25 in	20.80 lb
146335	23650-0040	40 ton	1.75 in	2.88 in	2.00 in	7.00 in	1.75 in	5.00 in	4.32 in	11.88 in	8.50 in	2.12 in	9.59 in	33.91 lb
146336	23650-0050	55 ton	2.00 in	3.25 in	2.25 in	7.75 in	2.00 in	5.75 in	5.00 in	13.38 in	9.75 in	2.00 in	11.00 in	51.75 lb
151360	23650-0110	110 ton	3.00 in	5.00 in	3.25 in	13.00 in	3.00 in	7.88 in	6.50 in	21.50 in	14.50 in	3.63 in	16.50 in	178.00 lb
151361	23650-0175	175 ton	4.00 in	5.50 in	4.25 in	14.50 in	4.00 in	10.00 in	9.00 in	25.69 in	18.38 in	4.56 in	19.75 in	338.00 lb
Oversized Shackles	Oversized Shackles	W.L.L. Tons	Size	A	B	C	D	E	F	H	L	N	P	Weight (lb)
148497	501386-0100	40 ton	1.75 in	2.88 in	2.00 in	10.00 in	2.25 in	6.00 in	4.32 in	15.35 in	10.50 in	2.25 in	9.00 in	45.00 lb
148393	501082-0100	40 ton	2.25 in	2.88 in	2.00 in	12.50 in	2.25 in	8.00 in	4.32 in	17.85 in	12.50 in	2.25 in	10.00 in	90.00 lb
148394	501083-0100	50 ton	2.00 in	3.25 in	2.25 in	12.25 in	2.50 in	8.00 in	5.00 in	18.50 in	13.00 in	2.50 in	11.00 in	72.00 lb
Shims	Shims													
146534	30013-0112	For use with 50,000 / 70,000 lb MSI crane scales												

Technical specifications subject to change without notice. Weights listed are approximate.



14240 Interurban Avenue South, STE. 200, Seattle, Washington 98168-4661 USA
 TEL: 206-433-0199 • FAX: 206-244-8470 • EMAIL: info@msiscales.com www.msiscales.com

© 2013 by Measurement Systems International, Inc. PN 154711 4/13
 Specifications subject to change without notice. Printed in USA