

MSI

Shear Web Load Cell

MSI

Clevis Load Pin Sensor

INTEGRATED LOAD SOLUTIONS



RICE LAKE[®]
WEIGHING SYSTEMS

800-874-4320

www.ricelake.com/msi

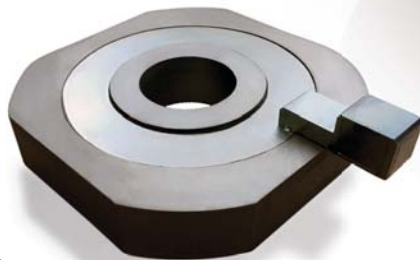
MSI-Shear Web Load Cell & MSI-Clevis Load Pin Sensor

INTEGRATED LOAD SOLUTIONS

Rice Lake Weighing Systems' Measurement Systems International brand offers MSI-Shear Web Load Cells and MSI-Clevis Load Pin Sensors to enhance integrated solutions for overhead weighing operations. With customization available for most applications, the load pin sensor and load cell can be integrated into virtually any hoist or crane system, providing the highest quality overhead weighing solutions.

MSI-Shear Web Load Cell

When load block integration is key, a low-profile, donut-style load cell that compensates for hook rotation without losing accuracy is essential.



MSI designed the MSI-Shear Web Load Cell to be an integrated, low-profile load cell that can eliminate headroom loss without sacrificing accuracy.

With extensive crane hook integration possibilities, the load cell can be custom-fit for use with existing equipment. To transmit load data, the load cell can be interfaced with a wireless RF transmitter to communicate with a digital weight indicator or handheld remote display. Reliable and durable, the shear web load cell is IP67 rated, zinc plated and constructed with 4340 alloy steel. Designed for placement above the load block trunnion, the load cell features off-axis compensation and 0.10 percent accuracy of rated capacity.

Shear Web Load Cell Standard Features

- Designed to be placed above the trunnion of a load block, this integrated low-profile load cell eliminates headroom loss
- Off-axis compensation

Specifications

Accuracy (Static Load):	0.10% of rated capacity
Material:	4340 alloy steel, zinc plated
IP Rating:	IP67
Resistance:	700 ohms

Compatible Accessories

- TranSend™ wireless load cell interface
- MSI-9000 wireless load cell interface

MSI-Clevis Load Pin Sensor

The MSI-Clevis Load Pin Sensor is an integral component to overhead weighing. Each load pin is precision machined for utmost strength, safety and performance. The load pin sensors are designed to replace existing sheave and shackle pins, as well as interface pins located at a wire rope dead-end. Constructed with 17-4 stainless steel, the load pin is durable and corrosion resistant. Load data communication is easily added with a 6-Pin receptacle or built-in cable for output signal conditioning, load indicating and wireless transmission.



Each strain gauge is internally mounted for complete environmental protection, and to ensure the highest level of accuracy and quality performance, every clevis load pin sensor is internally balanced and temperature compensated.

Load Pin Sensor Standard Features

- Multiple load vector options available
- Internally gauged for superior ingress protection

Specifications

Non-Linearity:	± 0.5% at full scale
Material:	17-4 stainless steel
IP Rating:	IP66
Resistance	350 ohms (other bridge options available)

Compatible Accessories

- TranSend wireless load cell interface
- MSI-9000 wireless load cell interface

Your Rice Lake Weighing Systems distributor is:

RICE LAKE
WEIGHING SYSTEMS

230 W. Coleman St. • Rice Lake, WI 54868 • USA
TEL: 715-234-9171 • FAX: 715-234-6967 • www.ricelake.com

An ISO 9001 registered company © 2015 Rice Lake Weighing Systems PN 171112 12/15
Specifications subject to change without notice.