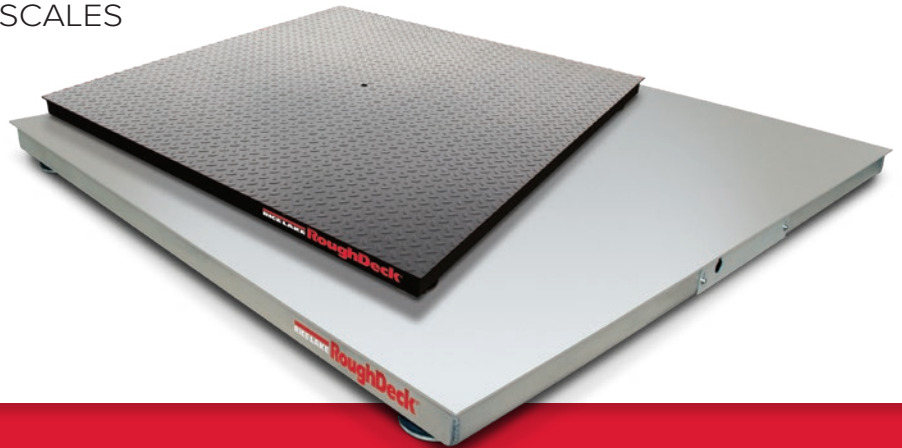


# RoughDeck®

HP, HP-H, SS AND HE SERIES FLOOR SCALES



**RICE LAKE**®  
WEIGHING SYSTEMS

800-472-6703

[www.ricelake.com](http://www.ricelake.com)

# RoughDeck® is Simply the Toughest, Most Accurate Floor Scale Available.

Harsh environments and demanding capacities are no match for the industry's toughest floor scale. RoughDeck lives up to its name with superior structural design, specialized footing, and durable load cell and cable protection. RoughDeck's design separates it from other floor scales by minimizing deck deflection and extraneous forces that could damage load cells. Standard or customized, the RoughDeck series is available in low-profile

stationary and portable versions, and offers component interchangeability and alternative construction materials to meet specific industrial requirements—from basic shipping and receiving to highly corrosive or washdown environments.



## 1 TUFFSEAL JUNCTION BOX PROTECTS CIRCUITRY

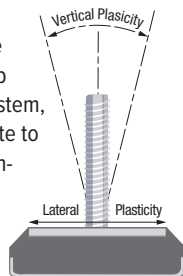
Included with all models, the rugged, stainless steel TuffSeal junction boxes are specifically designed to protect sensitive circuitry. Its unique closure design prevents moisture access and a Gore™ breather vent helps equalize the pressure inside the enclosure which can be caused by sudden temperature or environmental changes.

*GORE, GORE-TEX and design are registered trademarks of W.L. Gore & Associates, Inc.*



## 2 SUREFOOT™ FOR ACCURACY

SUREFOOT decreases extraneous forces on the load cell, resulting in superior accuracy and repeatability. A stainless steel cup sits on the floor and is bonded by a pliable neoprene cushion to a stainless steel top plate with attached threaded stem, allowing the stem and top plate to move laterally and tilt independently of the bottom stainless steel cup.



## 3 LOAD CELL AND CABLE PROTECTION

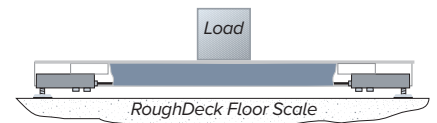
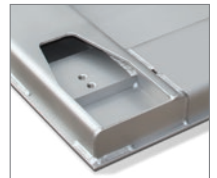
Load cells are recessed within the channels, and conduit lies within the channels to deter rodent damage and help protect components from rough handling.

## 4 SUPERIOR STRUCTURAL DESIGN

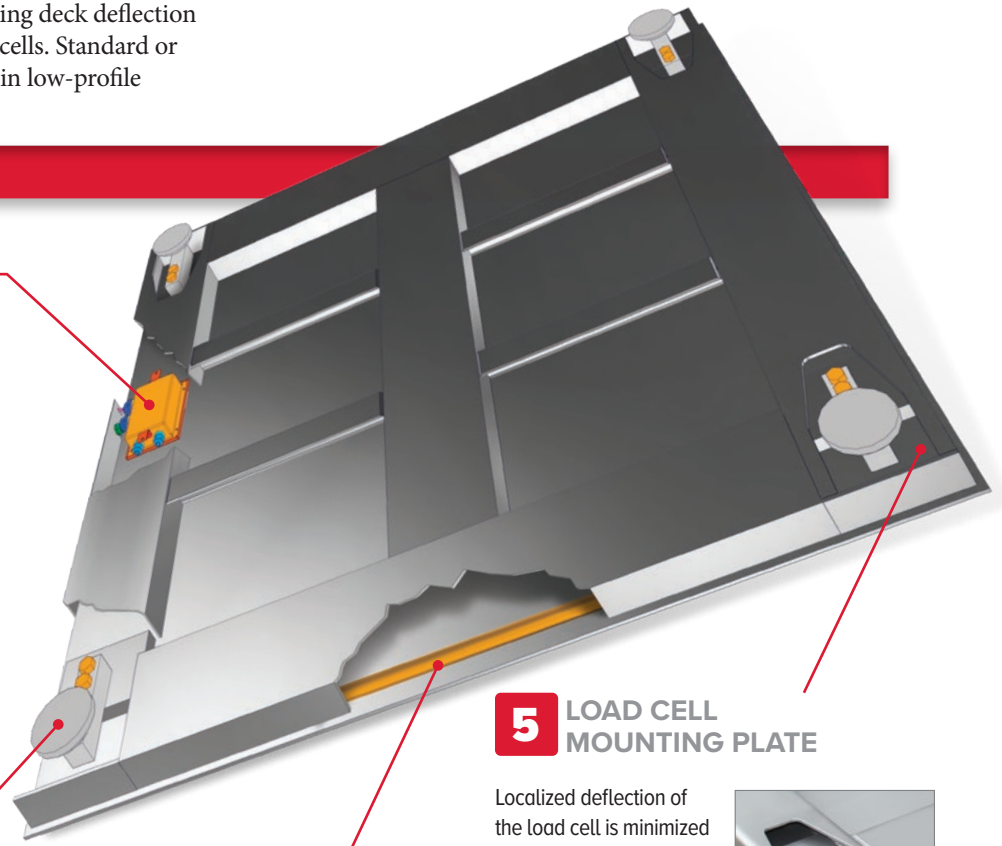
This design has proven so superior that RoughDeck carries a full five-year warranty on the deck structure.

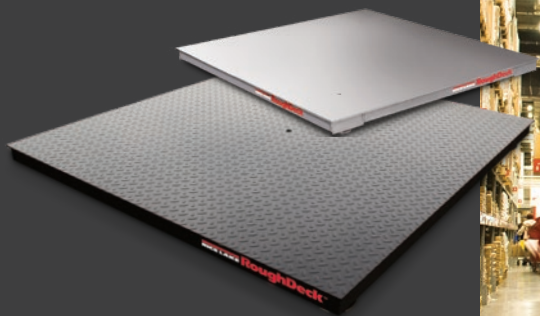
## 5 LOAD CELL MOUNTING PLATE

Localized deflection of the load cell is minimized by welding the mounting plate to the channel frame rather than the deck plate.



*The RoughDeck design minimizes deflection of the deck and feet for greater accuracy and repeatability with every weighing.*





**HP and HP-H**



**SS**



**HE**

## Standard Features and Options

For non washdown environments

For corrosive, dry chemical environments

For harsh chemical or washdown environments

### Construction:

Mild Steel

304 Stainless Steel

304 Stainless Steel

### Deck/Top Plate:

Diamond tread

Standard

Optional

Optional

Smooth

Optional

Standard

Standard

### Load Cells:

Factory Mutual-approved



Standard

Standard

Standard

Alloy steel, environmentally sealed

Standard

—

—

Stainless steel

Standard

Standard

Welded seal, IP66

Optional

Standard

—

Hermetically sealed, IP69K

Optional

Optional

Standard

### Junction Box:

Internal mount, side access

Standard

Standard

Optional

Remote mount

Optional

Optional

Standard

Internal mount, top access

Optional

Optional

Optional

### Miscellaneous:

4 adjustable stainless steel SUREFOOT™ support feet

Standard

Standard

Standard

20' EL147HE Hostile Environment Load Cell Cable

Standard

Standard

Standard

Threaded eyebolt holes for lifting

Standard

Standard

Standard

Custom sizes

Optional

Optional

Optional

Top access foot adjustment holes

Optional

Optional

Optional

Epoxy paint

Optional

—

—

### Approvals:



NTEP CC 92-001

NTEP CC 92-001

NTEP CC 92-001



HP: AM-4827  
HP-H: AM-5284  
(Only capacities greater than 10,000 kg)

AM-4827

AM-4827

# RoughDeck®

HP, HP-H, SS AND HE SERIES FLOOR SCALES

# RoughDeck®

HP, HP-H, SS AND HE SERIES FLOOR SCALES

## Any Application, Any Demand.

From 2' x 2' to 8' x 10', 500 lb to 30,000 lb, Rice Lake has a floor scale for any application and any demand. Need something custom-made? Rice Lake can build a RoughDeck in any size, any shape and any capacity.

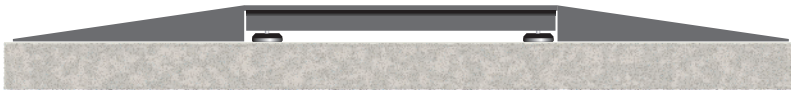
### In Floor with Pit Frame



### Above Ground Access



### Ramp Access



## OPTIONS

Installation options, whether in mild or stainless steel, add versatility to your RoughDeck.

- Digital weight indicators
- Indicator floor stand
- Floor anchor plates
- Pit frame
- Access ramps
- Bumper guards
- Portability frames

All installation options are available in mild or stainless steel.



SALES AND TECHNICAL ASSISTANCE

**RICE LAKE®**  
WEIGHING SYSTEMS

**HEADQUARTERS**  
230 West Coleman Street  
Rice Lake, Wisconsin 54868 - USA  
Tel: (715) 234 9171 | Fax: (715) 234 6967  
[www.ricelake.com](http://www.ricelake.com)