

# SCT-1100

SIGNAL CONDITIONING  
TRANSMITTERS



**RICE LAKE**  
WEIGHING SYSTEMS

800-472-6703  
[www.ricelake.com](http://www.ricelake.com)

# SCT-1100

## SIGNAL CONDITIONING TRANSMITTERS

### Total Control in a Compact Package

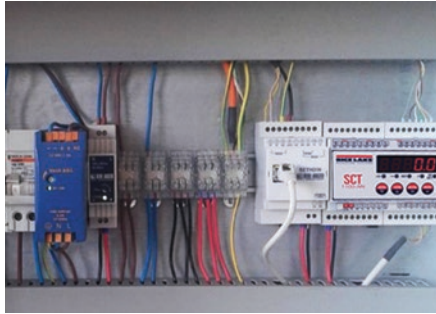
The ideal solution for PLC systems which require weight data from a scale, Rice Lake's SCT signal transmitters offer maximum control without the additional cost or space required of a traditional weight indicator.

These multi-function transmitters have a compact design while presenting the same signal-conditioning functions as a traditional weight indicator.

Utilized as an independent or dependent four-channel digital junction box, the SCT-1100 allows for the direct reading and diagnosis of each individual connected load cell or summed as a whole.

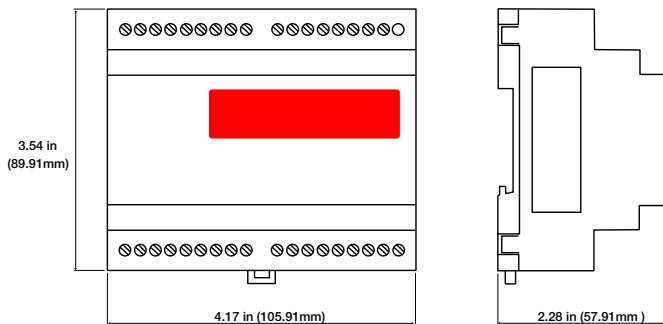
The ability to be DIN rail-mounted within a cabinet or control panel, permits a straightforward implementation into new and existing systems.

Integration is also made simple with a wide range of available fieldbus communications, as well as optional Bluetooth®, Wi-Fi and radio interfaces for external management.



### Standard Features

- Quick menu for real and theoretical calibration
- 0.5 in (13 mm) red LED display and six LEDs to showing active functions
- Standard DIN rail-mounting with power supply and enclosures
- Configurable calibration and setup parameters from keyboard
- Up to three calibration linearization points or three from the keyboard
- Reading of the net, gross and tare weights, clearing, semi-automatic and presettable tare, scale switch, setting of outputs application thresholds
- Diagnostic information via serial port, message display, printing, setting of APW in counting mode, simulation of key pressure, Modbus RTU



### Specifications

<b>A/D Sample rate:</b>	Four channel A/D 24-bit sigma-delta conversion, up to 200 conv./sec. auto select
<b>Resolution:</b>	Internal Resolution: 1.3 million counts Weight Display Resolution: 1,000,000 minimum System Linearity: $\pm 0.01\%$ full scale
<b>Digital Inputs/Outputs:</b>	Two inputs: 12/24 VDC Two outputs: 150 mA 48 VAC/ 150 mA 60 VDC
<b>Display:</b>	Six-digit (13 mm), red LED
<b>Annunciators:</b>	Net, center of zero, stability
<b>Keyboard:</b>	Five key, membrane panel, tactile feel Zero (Down), Tare (Up), Mode (Right), Print (Enter), C (On/Off)
<b>Temperature &amp; Humidity:</b>	Working Temperature: 5°F to 104°F (-15°C to 40°C) Humidity: 85% non-condensing
<b>Dimensions (W x H x D):</b>	4.17 in x 3.54 in x 2.28 in (106 mm x 90 mm x 58 mm)
<b>Rating/Material:</b>	NEMA Type 1, plastic pluggable connectors
<b>Warranty:</b>	One-year limited warranty

### Approvals



Measurement  
Canada  
Approved  
pending



Your Rice Lake Weighing Systems distributor is:

**RICE LAKE**  
WEIGHING SYSTEMS

230 W. Coleman St. • Rice Lake, WI 54868 • USA  
TEL: 715-234-9171 • FAX: 715-234-6967 • [www.ricelake.com](http://www.ricelake.com)

An ISO 9001 registered company © 2020 Rice Lake Weighing Systems PN 185559 7/20  
Specifications subject to change without notice.