

# TRANSLINK™

PARALLEL LINK  
TRUCK SCALE  
ASSEMBLY



**RICE LAKE®**  
WEIGHING SYSTEMS

To be the best by every measure®

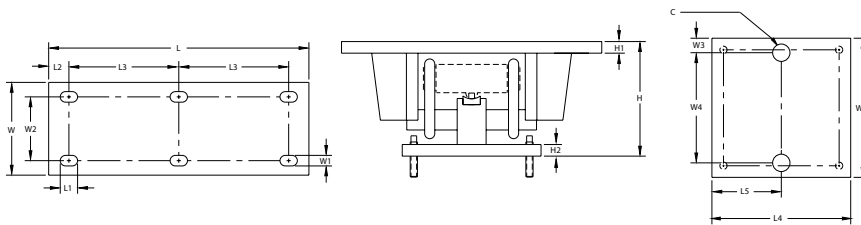
[www.ricelake.com](http://www.ricelake.com)

# TRANSLINK™ PARALLEL LINK TRUCK SCALE ASSEMBLY

The Translink Parallel Link Truck Scale Assembly is designed for exceptional performance in heavy-capacity tank and vehicle weighing installations. Ideal for mechanical conversions and new scale installations, this mount features a design that allows the scale platform to move freely in all directions in the horizontal plane. The pendulous action of the links results in the self-centering of the weighing platform ensuring consistency, accuracy, and repeatability.

The unique parallel link design eliminates the need for costly and troublesome check rods; simply install platform bumpers and forget about weighbridge travel. Translink is constructed of fabricated and hardened tool steel and is available in capacities of 25,000 lb to 100,000 lb utilizing the RL75040 or RL75223 NTEP-certified load cells.

## Dimensions/Capacities:



	RL75223	RL75040A	RL75040A	5223	65040A	65040A
Dimensions	50,000 lb-100,000 lb	25,000 lb-40,000 lb	50,000 lb-100,000 lb	50,000 lb-100,000 lb	25,000 lb-40,000 lb	50,000 lb-75,000 lb
Inches (mm)	(2268 kg-9071.9 kg)	(22,679 kg-27,215.5 kg)	(45,359.2 kg)	(68,039.0 kg)		
<b>C</b>	1.50 (38.1)	1.50 (38.1)	1.50 (38.1)	1.50 (38.1)	1.50 (38.1)	1.50 (38.1)
<b>H</b>	12.93 (328.4)	9.88 (251.0)	12.82 (325.6)	12.93 (328.4)	9.88 (251.0)	12.82 (325.6)
<b>H1</b>	1.00 (25.4)	1.00 (25.4)	1.00 (25.4)	1.00 (25.4)	1.00 (25.4)	1.00 (25.4)
<b>H2</b>	1.00 (25.4)	1.00 (25.4)	1.00 (25.4)	1.00 (25.4)	1.00 (25.4)	1.00 (25.4)
<b>L</b>	22.50 (571.5)	18.50 (469.9)	22.50 (571.5)	22.50 (571.5)	18.50 (469.9)	22.50 (571.5)
<b>L1</b>	1.50 (37.5)	1.50 (37.5)	1.50 (37.5)	1.50 (37.5)	1.50 (37.5)	1.50 (37.5)
<b>L2</b>	1.75 (44.5)	1.75 (44.5)	1.75 (44.5)	1.75 (44.5)	1.75 (44.5)	1.75 (44.5)
<b>L3</b>	9.50 (241.3)	7.50 (190.5)	9.50 (241.3)	9.50 (241.3)	7.50 (190.5)	9.50 (241.3)
<b>L4</b>	11.75 (298.5)	11.75 (298.5)	11.75 (298.5)	11.75 (298.5)	11.75 (298.5)	11.75 (298.5)
<b>L5</b>	5.88 (149.4)	5.88 (149.4)	5.88 (149.4)	5.88 (149.4)	5.88 (149.4)	5.88 (149.4)
<b>W</b>	7.75 (196.9)	7.75 (196.9)	7.75 (196.9)	7.75 (196.9)	7.75 (196.9)	7.75 (196.9)
<b>W1</b>	.91 (23.1)	.91 (23.1)	.91 (23.1)	.91 (23.1)	.91 (23.1)	.91 (23.1)
<b>W2</b>	5.25 (133.4)	5.25 (133.4)	5.25 (133.4)	5.25 (133.4)	5.25 (133.4)	5.25 (133.4)
<b>W3</b>	1.25 (31.8)	1.25 (31.8)	1.25 (31.8)	1.25 (31.8)	1.25 (31.8)	1.25 (31.8)
<b>W4</b>	9.25 (235.0)	9.25 (235.0)	9.25 (235.0)	9.25 (235.0)	9.25 (235.0)	9.25 (235.0)
<b>W5</b>	11.75 (298.5)	11.75 (298.5)	11.75 (298.5)	11.75 (298.5)	11.75 (298.5)	11.75 (298.5)

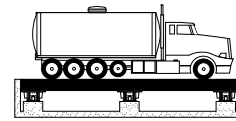
Your Rice Lake Weighing Systems distributor is:

**RICE LAKE**  
WEIGHING SYSTEMS  
To be the best by every measure®

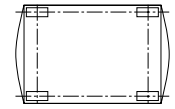
230 W. Coleman St. • Rice Lake, WI 54868 • USA  
TEL: 715-234-9171 • FAX: 715-234-6967 • [www.ricelake.com](http://www.ricelake.com)

An ISO Registered Company © 2010 Rice Lake Weighing Systems PN 22120 5/10  
Specifications subject to change without notice.

## Typical Mounting Configurations:



Truck Scale  
(6-Mount Arrangement)



Horizontal Vessel  
(4-Mount Rectangular)

## Standard Features

- Capacities per assembly: 25,000 lb-100,000 lb
- Free movement in all directions in the horizontal plane with virtually no friction and is completely self-centering, enhancing repeatability
- Links provide optimal loading conditions for the load cell
- Simplified design allows bolting directly to weighbridge and foundation
- Requires no check rods

## Options

- NTEP-certified RL75223 or RL75040A shear beam load cells
- NTEP-certified RTI 5223 or Sensortronics 65040A shear beam load cells