

# WM-Ai

## FULLY AUTOMATIC WRAPPER with Day Glow Labeler

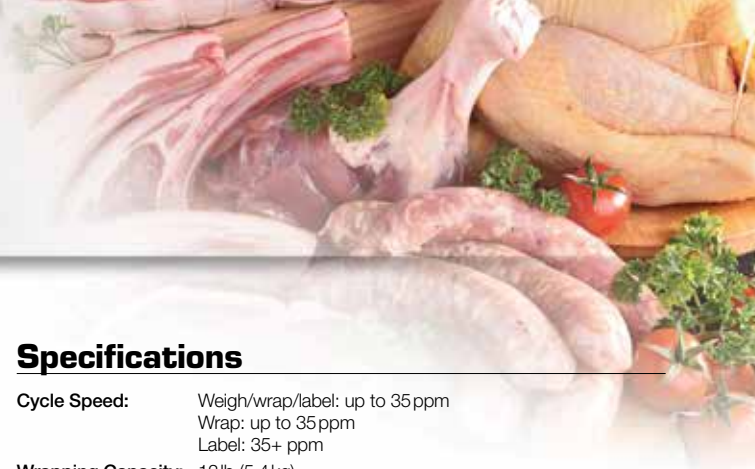
### Standard Features

- Weigh/wrap/label up to 35 packs/minute
- Apply a secondary label in addition to the main label
- Use pre-printed day glow labels, select a label design to print or upload your own
- Automatic tray identification and centering
- Variable speed infeed
- Automatic film selection
- Film pre-stretching function
- Front loading film with auto set
- Adjustable touchscreen viewing angle
- Large, 12.1-inch LCD color touchscreen
- 19 tactile keys
- Static and DHCP TCP/IP Ethernet communication
- Dual-range weighing (0lb-15lb x 0.005lb/15lb-30lb x 0.01lb)
- Robotic label application with user selectable positioning
- Stores and prints graphics for custom labeling
- Safe handling instructions, country of origin, nutrition and more
- Large 9-inch diameter label roll and 3-inch wide thermal head
- 2 GB memory
- Compatible with third-party communication software, including Invatron's PLUM™ Scale Management and ADC's InterScale™



### Options/Accessories

- ScaleLink Pro 5 product management software
- Roller pack-off table, 3ft or 5ft
- Rotary bin with adjustable height, wheels and handle, 28 inch diameter x 8 inch deep
- Wireless communications
- Washdown cover



### Specifications

**Cycle Speed:** Weigh/wrap/label: up to 35ppm  
Wrap: up to 35ppm  
Label: 35+ ppm

**Wrapping Capacity:** 12lb (5.4kg)  
**Weighing Capacity:** 15lb x 0.005lb / 30lb x 0.01lb (dual-range standard)

**Wrapping Size:** Width: 3.7-14.9in (95-380mm)  
Depth: 3.1-10.2in (80-260mm)  
Height: 0.4-5.1in (10-130mm)  
Tray Height: 2.7in max (70mm)

**Display:** 12.1 in (307 mm) color touchscreen  
**Film:** Two rolls, automatic film selection  
**Power:** 200V-240V (1 phase)  
Standard 20 A circuit

**Power Consumption:** Stand-by: 360W  
In Operation: 1800W (maximum)

#### Main Printer

**Label Size** Maximum width: 3.1 in (80mm)  
Maximum length: 4.1 in (105mm)  
Max length for automatic application: 3.4 in (85mm)

**Label Roll:** 9.0 in (230mm) maximum O.D.  
3.0 in (77 mm) minimum I.D.

**Film Size:** Length: 5,000ft (1,524m)  
Width: 9.8in-21.0in (250-533mm)  
Outside diameter: 7.9 in (200mm)

#### Day Glow Printer

**Label Size** 25mm-64mm wide; 25mm-64mm

**Label Roll Core Size:** 1.5 inch factory default; 3 inch option kit

**Backing Paper:** 25mm-64mm (1.5 inch core);  
25mm-67mm (3 inch core)

**Label Roll Outside:** Maximum diameter:  
7.8inch (200mm) 1.5 inch core  
9.0inch (230mm) 3.0 inch core

**Label shape:** Square/rectangular; Round/oval

**Film Size:** Length: 5,000ft (1,524m)  
Width: 9.8in-21.0in (250-533mm)  
Outside diameter: 7.9in (200mm)

**Print Items:** Item name, unit price, weight, total price, special message,  
bar code, ingredients, tare, pack time

**Operating Temperature:** 41°F to 95°F (5°C to 35°C)

**Humidity Range:** 20-80%

**Classification:** NTEP CC 06-029

**Warranty:** One-year limited warranty  
Based on volume of 2,800 packs per day

### Approvals



Your Rice Lake Weighing Systems distributor is:



230 W. Coleman St. • Rice Lake, WI 54868 • USA  
TEL: 715-234-9171 • FAX: 715-234-6967 • [www.ricelake.com/retail](http://www.ricelake.com/retail)

An ISO 9001 registered company © 2016 Rice Lake Weighing Systems PN 176821 6/16  
Specifications subject to change without notice.

# WM-Ai

## FULLY AUTOMATIC WRAPPER with Day Glow Labeler



800-472-6703  
[www.ricelake.com/retail](http://www.ricelake.com/retail)



### Make Your Labels Pop!

Select an existing label design or upload your own image to add a custom message to product packages. The Day Glow Labeler will print and adhere the label to the product wrap immediately after applying the main label, without slowing down operations. Pre-printed labels (such as country of origin or meat grade) can be automatically fed through the Day Glow Labeler to enhance product appearance and add important information not typically found on the main label. The WM-Ai Day Glow Labeler takes meat, produce and fruit packaging to the next level.



## Enhance Product Presentation with Ishida's WM-Ai Automatic Wrapper with Day Glow Labeler

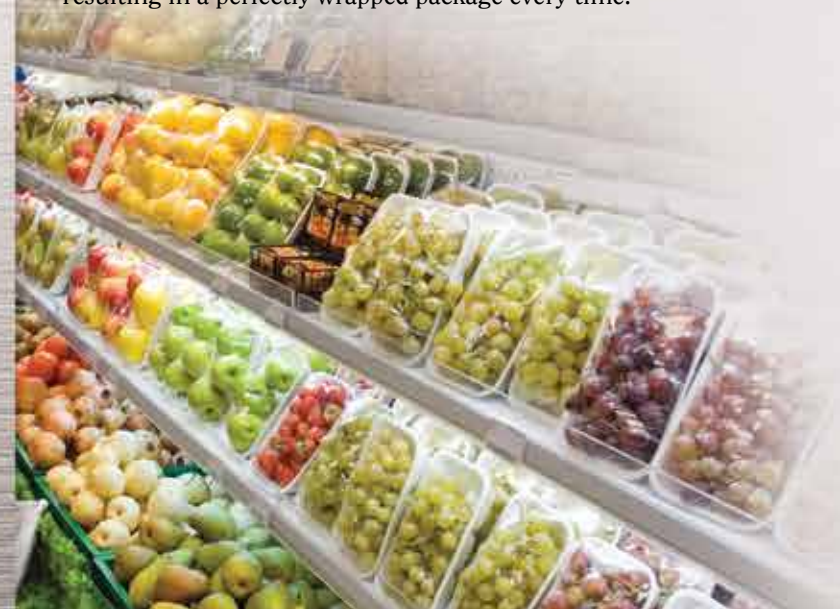
Ishida's versatile, PC-based WM-Ai automatic wrapper with Day Glow Labeler delivers space-saving efficiency and high-speed performance—all with the ability to weigh, wrap and label up to 35 packages per minute.

The WM-Ai's Day Glow Labeler includes all the features of the standard WM-Ai and adds a secondary day glow label printer, allowing for a wide variety of label designs or pre-printed labels to be applied to product, in addition to the main label. Adding a day glow label takes product marketing and appearance to a higher echelon with informative graphics and special messages.

Two rolls of film on one side of the wrapper reduces overall floor space and optimizes production flow. The user-friendly, large, color touchscreen makes operation extremely simple, and sanitation guidelines are effortlessly maintained with easy access to cleaning in, around and under the unit.

### Automatic Tray Identification and Centering

A CCD camera automatically identifies the tray when placed on the infeed conveyor. Wrapping and labeling parameters as well as tare weight are then set automatically. The centering conveyor corrects off-center tray placement, resulting in a perfectly wrapped package every time.



### Intuitive Operation

The WM-Ai Day Glow Labeler is a flexible wrapping system designed to meet each customer's individual requirements. Toggling between standard operation and optional functions is made simple with the 12.1-inch LCD color touchscreen. Operational ease is further enhanced with many automated functions designed into the system—from film selection to tray centering to robotic label application and more.



Large, 12.1-inch LCD Color Touchscreen

### Variable Speed Infeed

Difficult and awkwardly positioned product such as stacked or loose items can be challenging with automatic systems. The wrapper's three programmable infeed speeds (low, medium and high) prevent toppling and spills, keeping the production process flowing smoothly.

### Automatic Film Selection and Pre-stretching

Two film sizes are loaded on only one side of the wrapper—reducing space while increasing efficiency. The appropriate film size is automatically selected for wrapping, and the pre-stretch function provides a smooth finish with a tight wrap.



Film Loading Area with Auto Set

### Space-saving Front Film and Label Loading

Front-loading both label and film rolls reduces additional space requirements on the sides of the wrapper. Simply hang a film corner on the supplied hook when loading and the film will automatically set in the wrapper. Stainless steel covers keep the film warm and clean to ensure the best wrap possible. A sliding chassis accommodates the label roll holder, which easily extends for loading label rolls.



Day Glow Label Loading Area

### Precise Label Application

The unique robotic dual-applicators can apply labels on the tray in various locations, and in either direction (standard or rotated). Additionally, the applicators are designed to provide delicate and reliable labeling using built-in sensors that detect contact pressure with the tray. Labels are consistently applied accurately and straight on all products without damaging packaging or contents.



Day Glow Label Applicator

### Sanitary and Easy to Clean

Cleaning is easily accomplished with the detachable and washable infeed platter and lifts. The entire exterior body is crafted from stainless steel, providing superior rust-resistance, stringent cleanliness and outstanding durability. An open interior design and generous underbody clearance allows for fast and easy cleaning.