

# 680/682 Synergy Indicator

## CPU Board Sense Line Configuration

**Issue:** The scale will not display weight due to reference error with 4-wire load cell connection

**Solution:** Install jumper wires or shunts for 4-wire load cell connection



Manuals are available from Rice Lake Weighing Systems at [www.ricelake.com/manuals](http://www.ricelake.com/manuals)

Warranty information is available at [www.ricelake.com/warranties](http://www.ricelake.com/warranties)

### CPU Board Revisions A - J2

Revisions A - J1 CPU boards have sense switches that are configured through the indicator menu.

Revision J2 CPU board does not have sense switches and require installing jumper wires in a 4-wire configuration to avoid errors.

Locate the revision sticker on the CPU board as shown in [Figure 1](#).

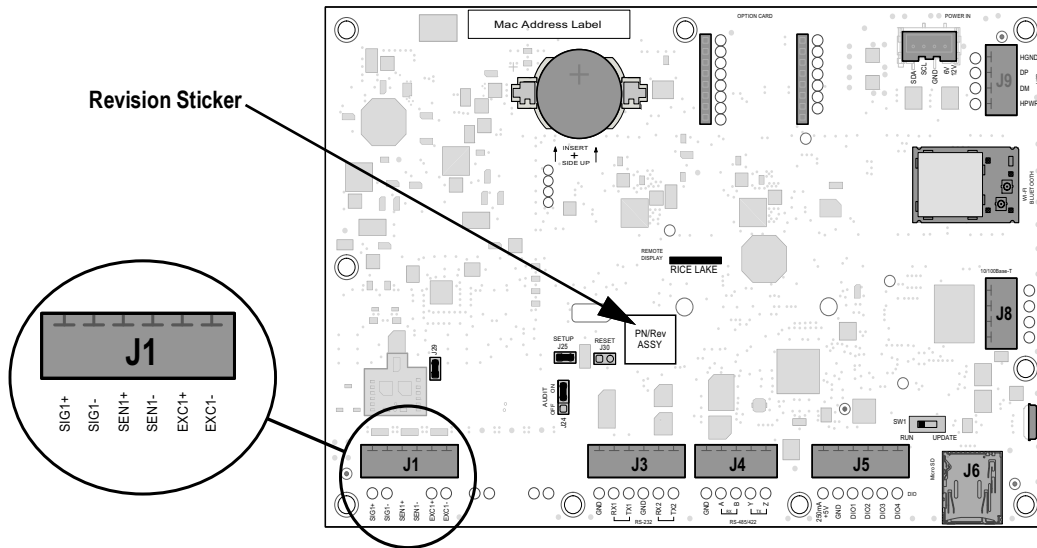


Figure 1. Revision J2 CPU Board


Revision	Configuration Method
A - J1	Menu configuration
J2	 <b>IMPORTANT:</b> To configure a revision J2 CPU board for a 4-wire connection, install a jumper wire between EXC+ and SEN+ and another jumper wire between EXC- and SEN-.

Table 1. Revision Identification

# CPU Board Revision K

Revision K CPU boards sense configuration is set by removing or installing shunts on J28 and J32.

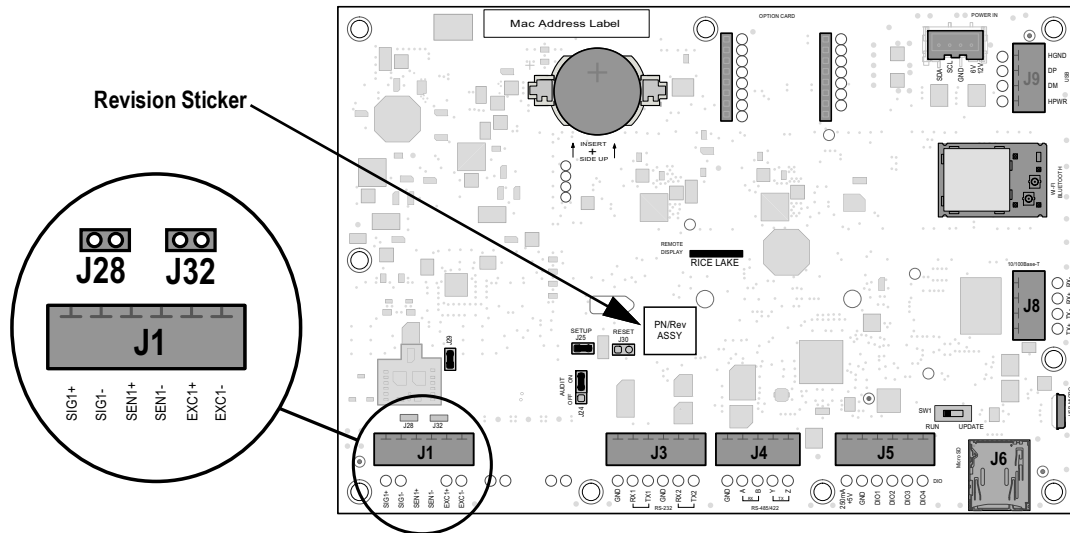


Figure 2. Revision K CPU Board


Revision	Configuration Method
K	<p>If using 6-wire load cell cable (with sense wires), remove shunts from jumper pins J28 and J32 before installing connector J1.</p> <p>For 4-wire installation, leave shunts on jumper pins J28 and J32 on.</p> <p> <b>NOTE: CPU board revision K has shunts installed on jumper pins J28 and J32 by default.</b></p>

Table 1. Revision Identification



© Rice Lake Weighing Systems Content subject to change without notice.

230 W. Coleman St. • Rice Lake, WI 54868 • USA USA: 800-472-6703 • International: +1-715-234-9171