

Loading and Printing Nonvolatile Bit Images

The Epson EU-T432 can store up to 255 bit images in nonvolatile memory. These images will remain intact through a power cycle. The total size of the images cannot exceed 192kb. See the *EU-T432/T442 Specification* and the *EU-T400 Series Specification for Commands* manual for more information.

The Windows® print driver contains a utility for loading images into the printer. The Windows printer driver must be installed on your PC to access the logo utility.

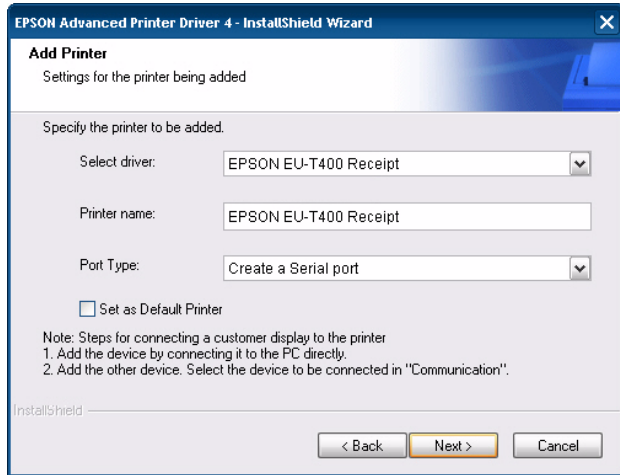
Once the image is in the printer, a 920i or other indicator can send the appropriate command to use that image in its ticket.

Driver Installation

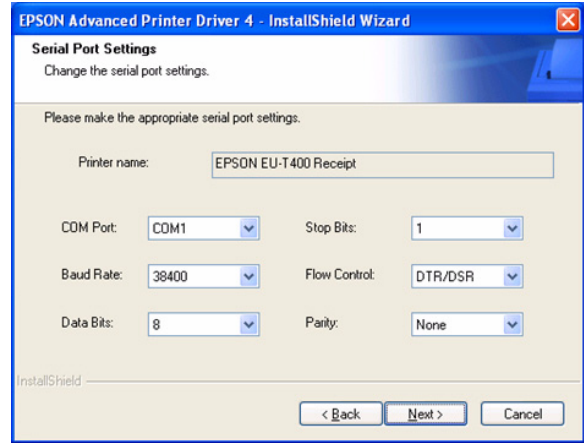
1. Obtain the Epson Advanced Printer Driver (can be found upon login at www.ricelake.com/EU-T400).

NOTE: APD_407E was used while making this document.

2. Start the installation.
3. At the *Printer Configuration* screen, click Add. The following dialog is shown.



4. Select the appropriate driver and port type, then click Next.
5. Configure the appropriate port settings. The default settings are shown below.

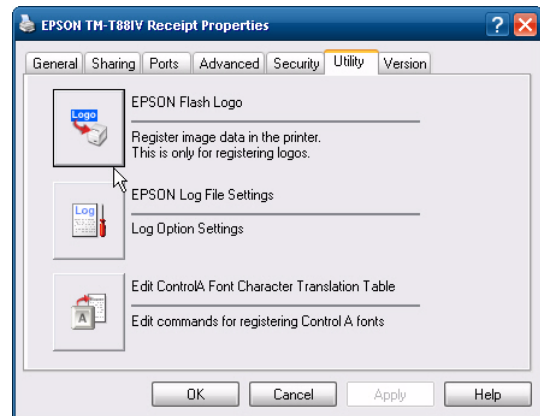


Note: for this write-up, the EU-T432 DIP switches were set to match the baud rate shown below. After the logo was loaded, the settings were changed back for operation with the 920i. This isn't strictly necessary but Rice Lake usually chooses 9600 baud to communicate with a printer and 38400 will load the images much faster.

6. Continue until installation is complete.

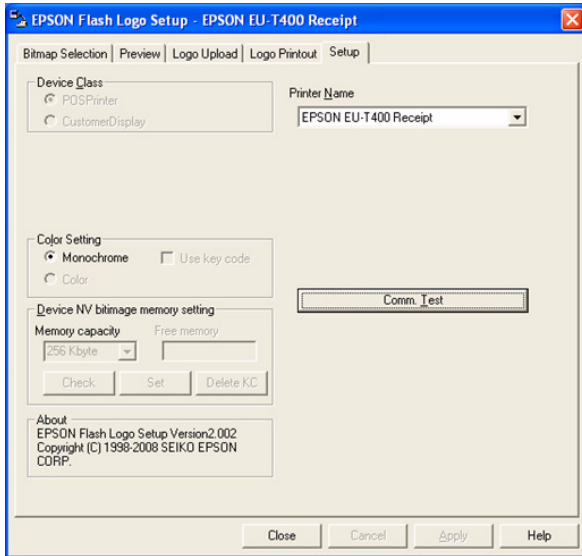
Load Images

1. From the Windows Control Panel, open Printers and Faxes.
2. Right click on the printer and select Properties.
3. Select the *Utility* tab and click on the EPSON Flash Logo button.

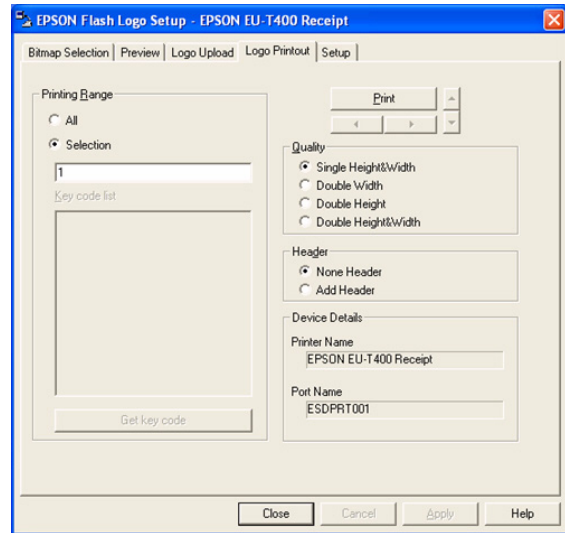


4. The *Flash Logo Setup* dialog box appears.

Windows is a registered trademark of Microsoft Corporation in the United States and other countries.



5. Powered on the printer and connect to the PC. A null modem connection is required.
6. Click on Comm Test to verify communications with the printer. If communications are OK, a confirmation dialog box will be shown.
7. Click OK and go to the *Bitmap Selection* tab.
8. Click on Open File... and browse for the desired image(s).
9. Select the desired image(s) and click Open. Repeat until all logo files have been added.



14. Under *Printing Range*, specify either All or Selection. All will print a sample of all loaded images. If Selection is chosen, you must also specify which image to print (1 - 255).
15. Click Print. A sample of the image(s) will print.

Printing from a 920i

The Print NV Bit Image command is defined on sheet 56 of the EU-T400 series Specification for Commands manual. The examples shown below are for a 920i iRite program.

Example 1 - print bit image number 1:

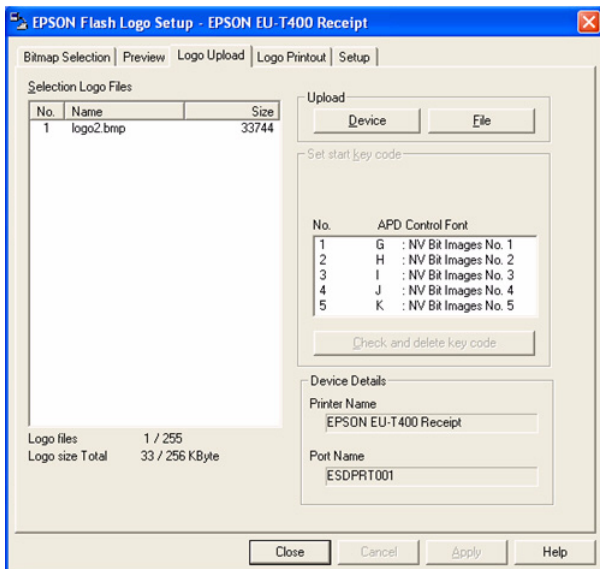
```
Write(3, Chr$(28));
Write(3, Chr$(112));
Write(3, Chr$(1));
SendNull(3);
```

Example 2 - print bit image centered on ticket:

Images will be printed per the current Justify setting - left, center, or right.

This example shows the command to set center justification, then the command to print bit image number 1, then the command to set left justification:

```
Write(3, Chr$(27));
Write(3, Chr$(97));
Write(3, Chr$(1));
Write(3, Chr$(28));
Write(3, Chr$(112));
Write(3, Chr$(1));
SendNull(3);
Write(3, Chr$(27));
Write(3, Chr$(97));
SendNull(3);
```



10. Go to the *Logo Upload* tab.
11. Click the Device button to load the graphics.
12. When the upload is complete, the printer will cycle and a confirmation message will be shown.
13. Go to the *Logo Printout* tab.