

How to Install ScaleLink Pro 5 Lite

Please read the following information carefully before starting installation and select the correct options for your site.

System Requirements

Parameter	Requirement
Operating System	ScaleLink Pro 5 Lite requires a PC running Windows 7, Windows 8, Windows 8.1 or Windows 10. The operating system must be capable of installing the Microsoft Windows .NET Framework. Note: ScaleLink Pro 5 Lite is a 32-bit application. It runs on 64-bit versions of Windows using the standard 32-bit support built into 64-bit Windows (called WOW64 or "Windows 32-bit On Windows 64-bit").
CPU and memory	1 gigahertz (GHz) or faster processor with 2 gigabyte (GB) or more RAM is recommended. More memory is strongly recommended if using a large database.
Screen resolution	The minimum screen resolution is 1024 x 768 pixels.
Database	Microsoft Jet database engine (installed as part of Microsoft Data Access Components - see Required Software below)

In general, the system requirements depend on factors such as the size of the database (number of PLUs, etc.) and number of simultaneous users. If installing at a large site, selection of a server machine with larger memory size and more powerful CPU than listed above is strongly recommended to achieve satisfactory performance.

Required Software

ScaleLink Pro 5 Lite requires the following software to be installed:

- **Microsoft Windows .NET Framework 3.5 SP1.**
Microsoft Windows .NET Framework version 3.5 Service Pack 1 must be enabled on your computer before you can install ScaleLink Pro 5 Lite. If not already enabled, you can enable .Net Framework 3.5 from "Turn Windows features on or off". You can open this window from [Start] – [Control Panel] – [Program] – [Turn Windows features on or off]. (Separate installation is not necessary on Windows 7 as the .NET Framework version 3.5 is pre-installed.)
- **Microsoft Internet Explorer 8 or later.**
The Internet Explorer installation includes some required Windows system files that may not be present on older versions of Windows. If not already installed, install Internet Explorer which you can obtain from the Microsoft web site. You do not need to set Internet Explorer as your default browser.

How to Install ScaleLink Pro 5 Lite

Before Starting the Installation

There are a number of things you will need during the installation. Please check the following list before starting to install ScaleLink Pro 5 Lite.

Scale network

Part of the ScaleLink Pro 5 Lite installation process involves defining all the scales in your network. In particular, if using TCP/IP (Ethernet) based scales, you will need the IP address of each scale. Contact your Ishida agent if you do not know how to obtain this information.

Installation Procedure

If you have an existing copy of ScaleLink Pro 5 Lite installed, please uninstall this first.

If your installation CD-ROM has been pre-configured, the appropriate installation will start automatically when you insert the CD-ROM in to the PC.

If not, use Windows Explorer to open the installation CD-ROM and double click the installer file.

Once started, simply follow the instructions that appear on the screen. [See below for step by step instructions.](#)

It is recommended that you reboot the PC after completing the installation.

Notes/Troubleshooting:

Take note of the following points when installing the software.

1. If any error messages appear when you run the installation, refer to the [Required Software](#) section above and install any required software that is not already installed, then run the ScaleLink Pro 5 Lite installation again.
2. You may need to change the default firewall setting. The procedure is as follows:

```
From the command prompt, run wf.msc and set the Firewall settings as follows:  
<Security settings> - <Windows Firewall with advanced security>  
<Windows Firewall with advanced security on local computer>  
<Windows Firewall Properties> - "Inbound connections"  
= Allow  
(the default setting is "Block")
```

3. If installing UAC (User Access Control) function is enabled, a UAC verification window may open asking you whether to accept the installation. Click the OK (Accept) to proceed with the installation. If you do not do this, the installation will fail because User Access Control will not permit the installer to update system settings.

How to Install ScaleLink Pro 5 Lite

4. If you intend to install ScaleLink Pro 5 Lite on a **mapped network drive** (even if mapped to a drive on the same PC), you need to modify the Microsoft .Net security settings to indicate that the drive is trusted (by default, the Microsoft .Net security subsystem prohibits programs from running on mapped drives). There are two ways to do this:
 1. In Windows Explorer, open the .Net framework folder (typically C:\WINDOWS\Microsoft.NET\Framework\v1.1.4322) and run **ConfigWizards.exe**. Click **Adjust .Net Security** and follow the instructions on the screen to set the security level for the **Local Intranet** to **Full Trust**.
 2. Alternatively, execute the following command from the command line in the .Net framework folder:

```
caspol -q -machine -addgroup 1 -url file:///z:/*  
FullTrust -name "Z Drive"
```

(This example assigns full trust to the Z drive. Replace Z with the drive letter (or folder path), you intend to use. Refer to the Microsoft *caspol* documentation for details.)

Method 1 is simpler, but Method 2 allows finer control of which drive or folder to assign full trust.

Note that, if installing to a mapped drive, **you must do this before installing ScaleLink Pro 5 Lite** otherwise the installation program will not be permitted to execute.

Uninstalling ScaleLink Pro 5 Lite

Open the **Windows Control Panel**, select **Add or Remove Programs**, and then select **ScaleLink Pro 5 Lite** from the list of applications. Follow the instructions that appear on the screen.

Note: Before you start, if the ScaleLink Pro 5 Lite server monitor icon appears in the Windows system tray (bottom right of desktop), right click on the icon, select **Server Status**, and then shut down the ScaleLink Pro 5 Lite server. Close the server monitor then right-click the ScaleLink Pro 5 Lite server monitor icon again and select **Exit**. (Uninstallation may fail if the ScaleLink Pro 5 Lite server has not been shut down, particularly if the UAC (User Access Control) function is enabled.)

Running ScaleLink Pro 5 Lite for the First Time

You will be prompted to specify the required settings when you run ScaleLink Pro 5 Lite for the first time. [See below for step by step instructions.](#)

Updating ScaleLink Pro 5 Lite

How to Install ScaleLink Pro 5 Lite

If you update from ScaleLink Pro 5 Lite Ver.2.04k and previous one to Ver.2.10f and later, you must uninstall ScaleLink Pro 5 Lite before installing the newer version. If you update from Ver.2.10f and later, you can install it without uninstalling. You just execute installation program and it updates automatically. When update from Ver.2.10f to later version, ScaleLink Pro 5 Lite keeps install path, database and ScaleLink Pro 5 Lite settings.

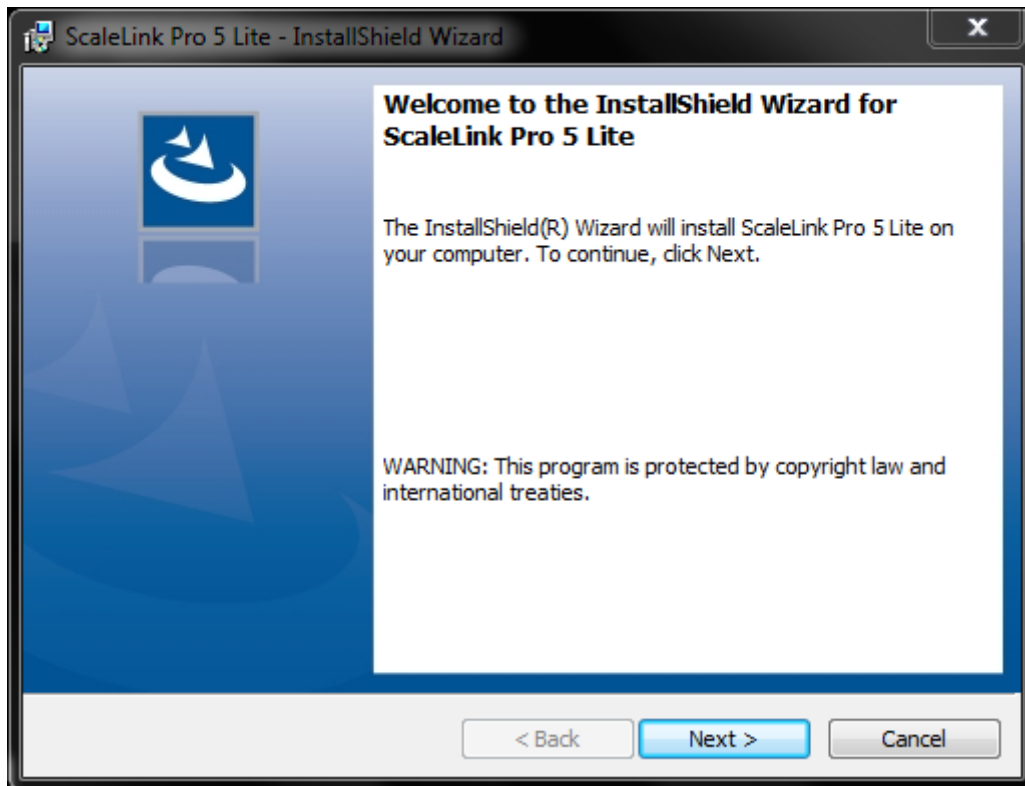
Re-Installing an Old Version of ScaleLink Pro 5 Lite

If you uninstall ScaleLink Pro 5 Lite and then re-install an older version, you may not be able to use your existing database and setup file. If the setup file is not compatible, ScaleLink Pro 5 Lite will not start and a setup load error will be recorded in the server log. If the database is not compatible, an error will appear when you start ScaleLink Pro 5 Lite and try to login. A database load error will also be recorded in the server log.

In general, you should never reinstall an older version of ScaleLink Pro 5 Lite except under the guidance of your Ishida dealer.

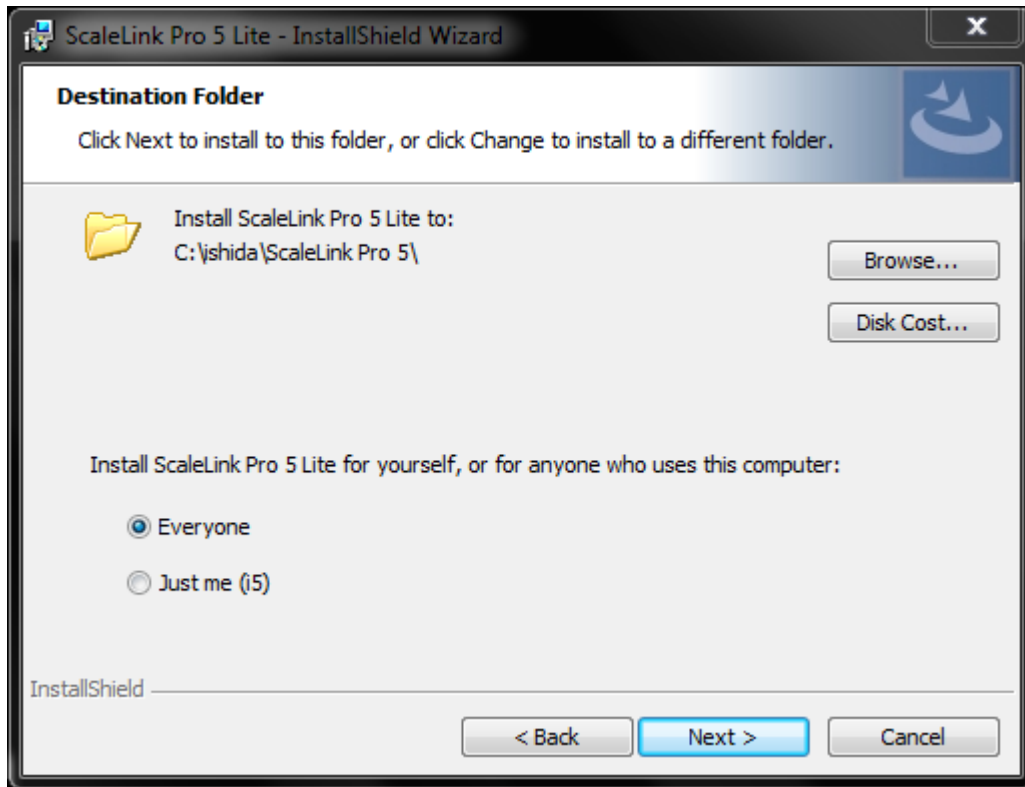
Step by Step Installation Procedure

1. If the installation does not start automatically, use Windows Explorer to open the installation CD-ROM and double click on the Setup icon.
The following window appears after you start the installation.



How to Install ScaleLink Pro 5 Lite

2. Click **Next** to proceed to the next page, the following page appears.



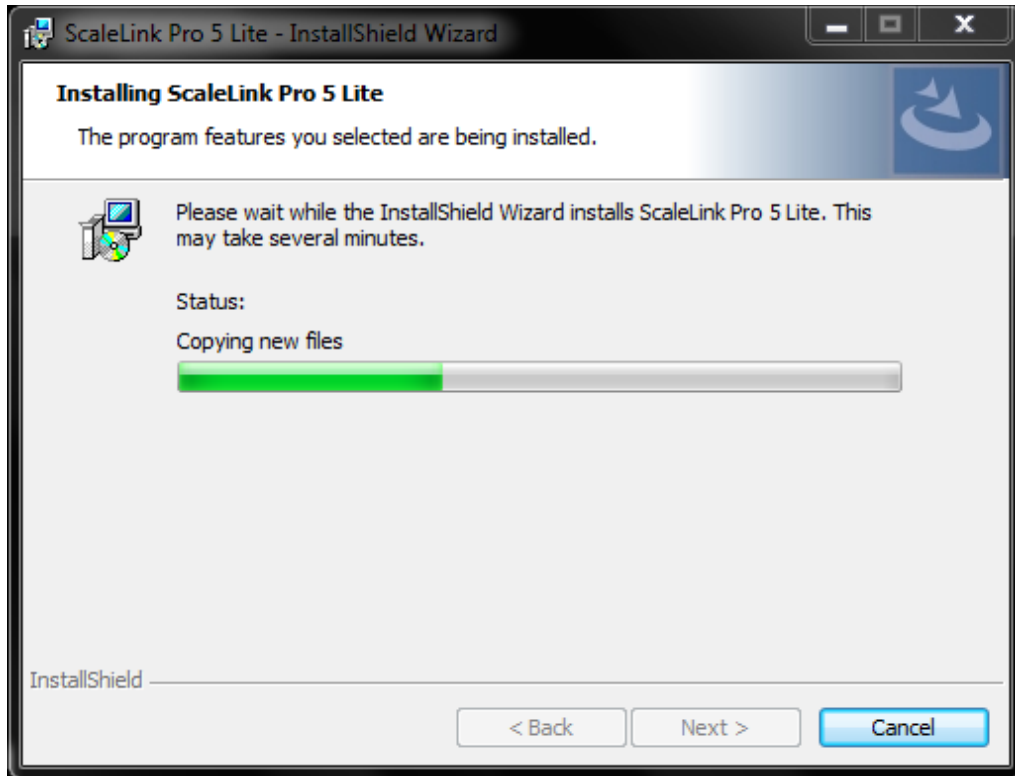
In most cases, you should accept the default folder. However, you may modify this if necessary.

On some versions of Windows, you will also have the option to install ScaleLink Pro 5 Lite for yourself only or for all users of the computer.

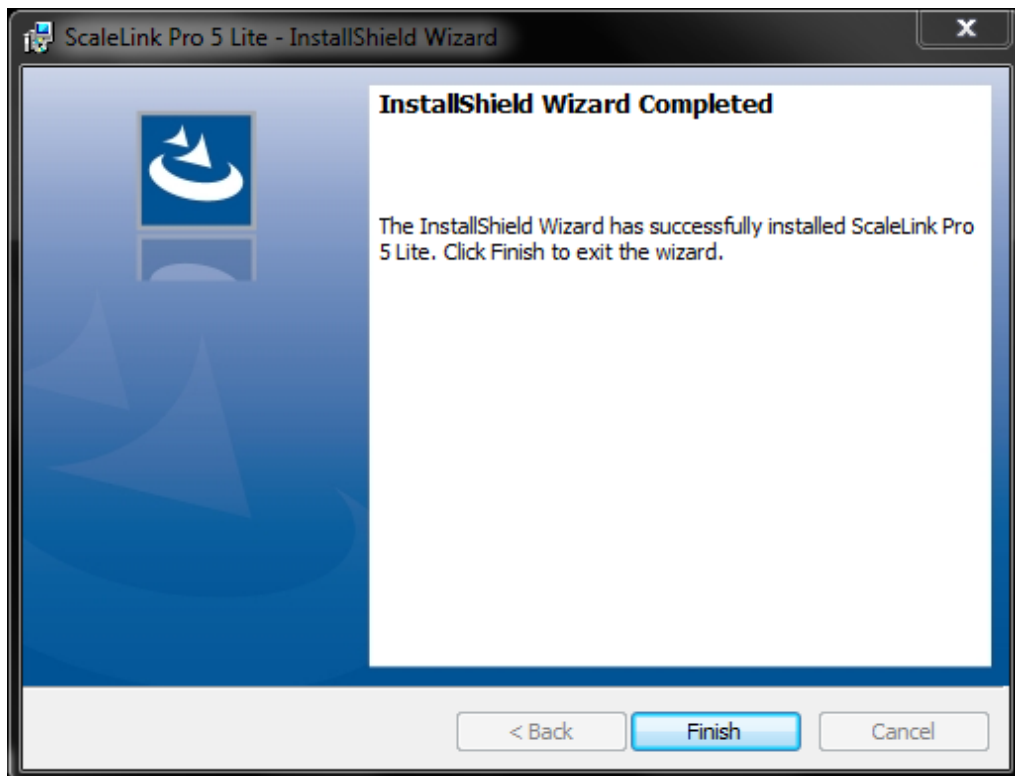
When you are ready, click **Next** to proceed to the next page.

3. A progress window appears while the installer copies the ScaleLink Pro 5 Lite files to your hard disk.

How to Install ScaleLink Pro 5 Lite



4. A final window appears to notify you that the installation completed successfully, click **Finish**.



How to Install ScaleLink Pro 5 Lite

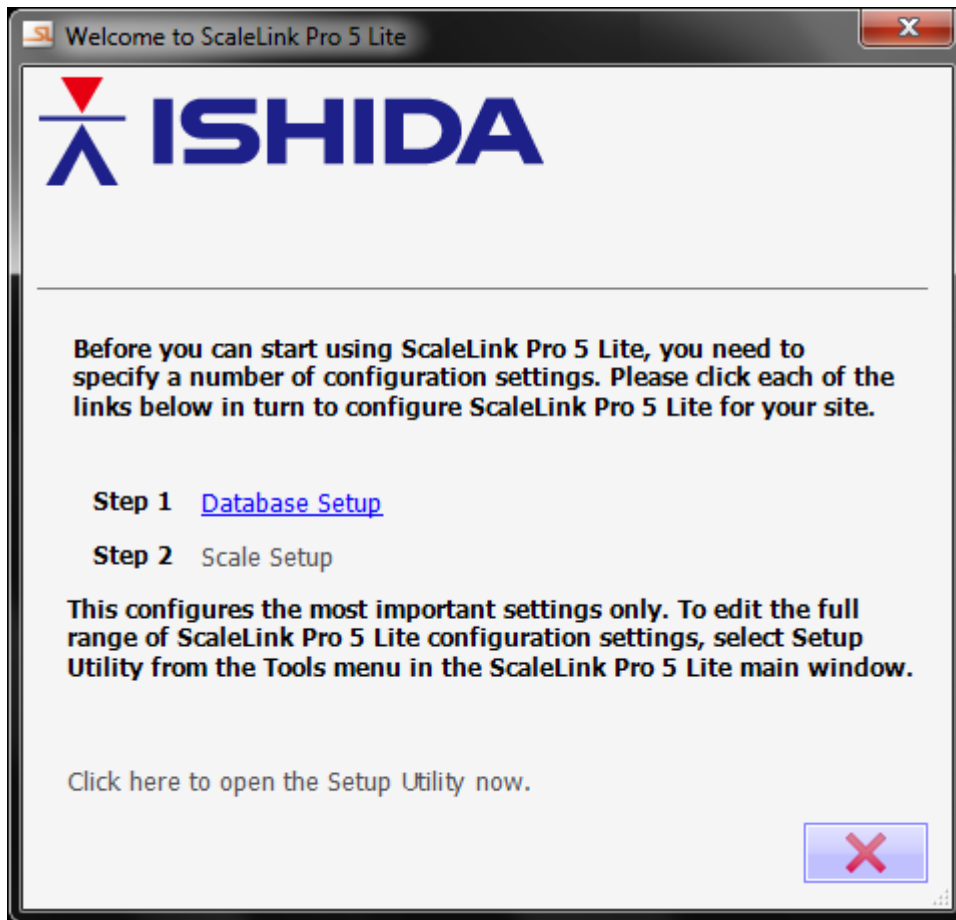
Once, you have successfully installed ScaleLink Pro 5 Lite, follow the instructions in the **Running ScaleLink Pro 5 Lite for the First Time** section above.

Note: If you uninstall ScaleLink Pro 5 Lite and then re-install an upper version, the instruction which appears to validate your license may appear again. In this case, just click **Later** to complete an installation.

Once, you have successfully installed ScaleLink Pro 5 Lite, follow the instructions in the **Running ScaleLink Pro 5 Lite for the First Time** section above.

Running ScaleLink Pro 5 Lite for the First Time

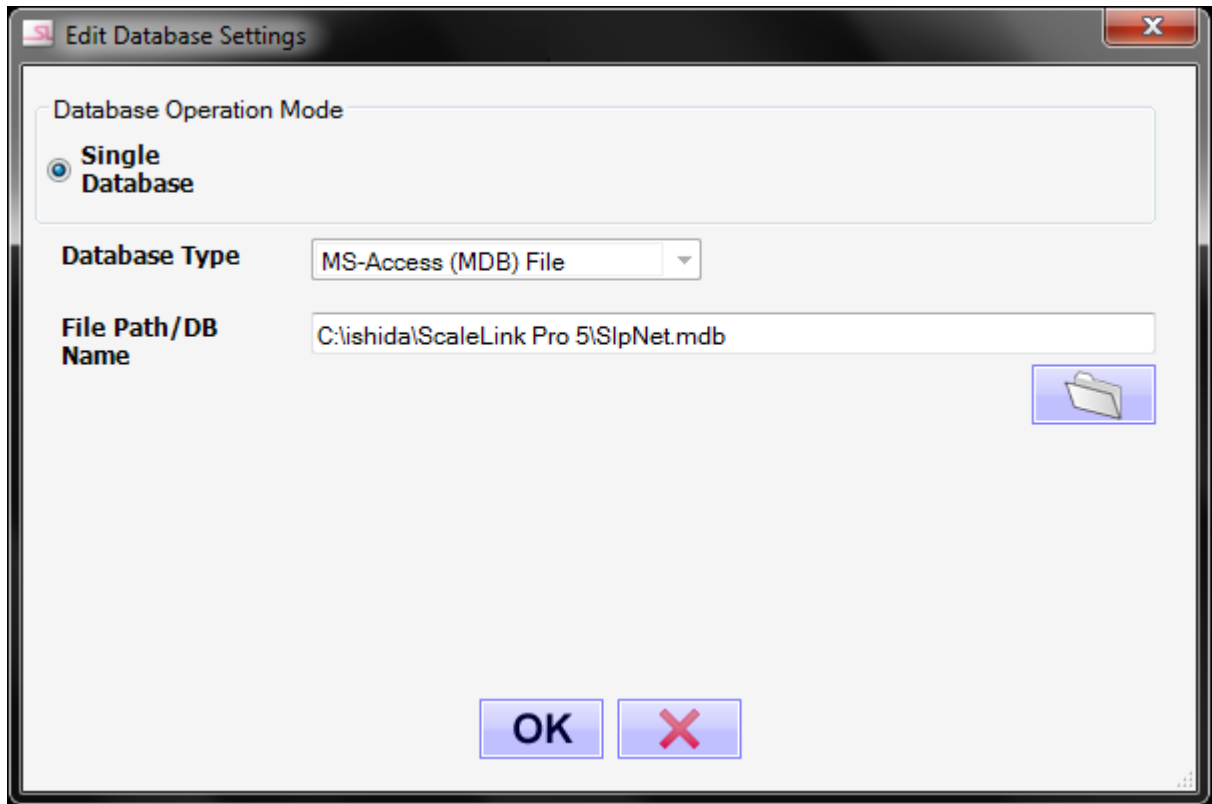
The following window appears when you run the standalone version of ScaleLink Pro 5 Lite for the first time.



As instructed, click each link in turn to configure your copy of ScaleLink Pro 5 Lite . Note that the **Scale Network Settings** link is not enabled until after you specify the database settings. The detailed procedure is as follows.

How to Install ScaleLink Pro 5 Lite

1. Click the **Database Setup** link to open the following window.



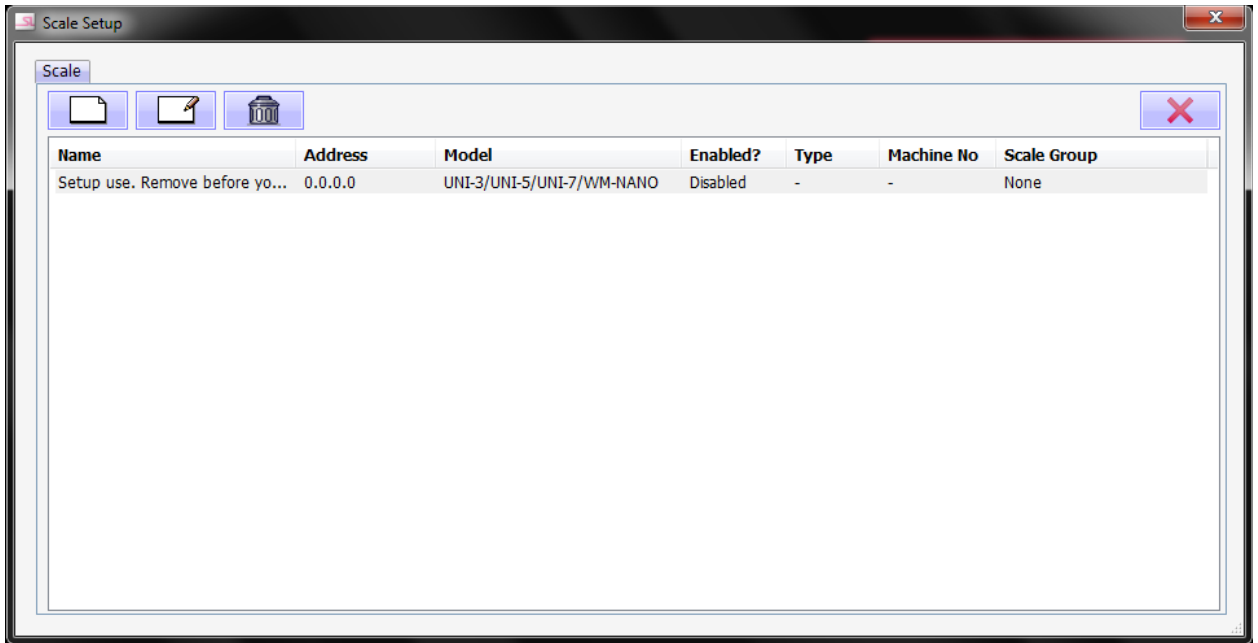
Typically you should use the default database file.

If you want to use a different file path for the MS-Access database, click the **Browse** button to select the database file name. If the file name you enter does not already exist, ScaleLink Pro 5 Lite will create it automatically.

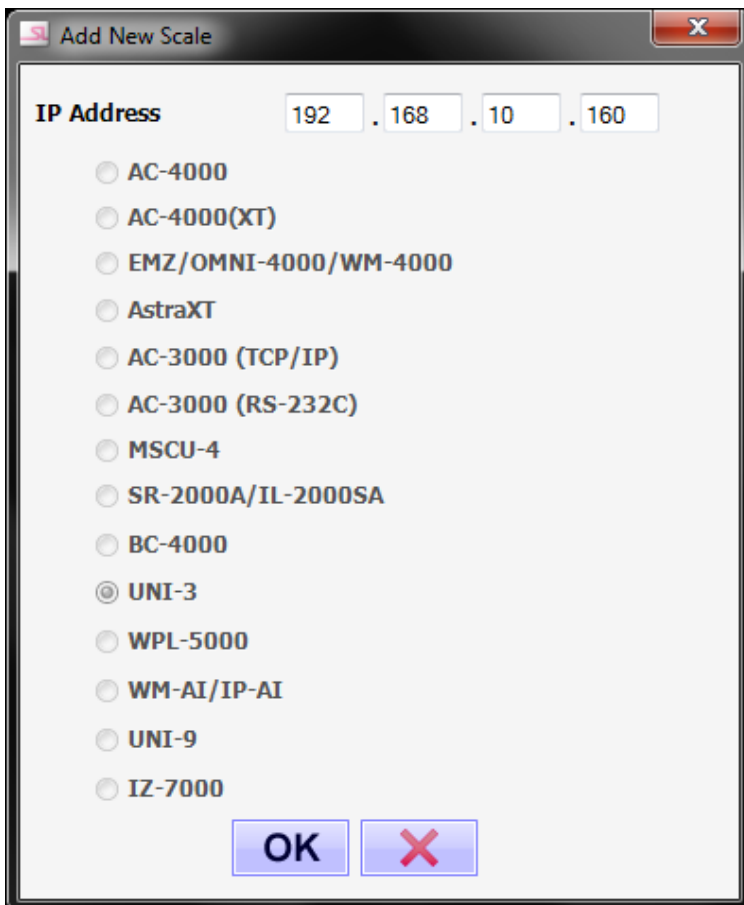
When finished, click OK to save your settings and return to the **Welcome to ScaleLink Pro 5 Lite** window.

2. Click the **Scale Setup** link to open the following window.

How to Install ScaleLink Pro 5 Lite



Click the **Delete** button to remove the default scale, then use the **Add** button to add each scale in your network. The following window appears each time you click the **Add** button.



How to Install ScaleLink Pro 5 Lite

Enter the IP address of the scale and select the scale model (if applicable), then click the **OK** button. The following window appears for editing the scale settings.

The screenshot shows the 'Edit Scale' dialog box with the following settings:

- Name: 192.168.10.160
- Scale ID: 0
- Scale Model: UNI-3
- IP Address: 192 . 168 . 10 . 160
- Machine No.: 0
- Scale Type: Bench (selected), Hanging
- Time Zone: (UTC-05:00) Eastern Time (US & Canada)
- FTP Settings: User Name, Password, Send Folder Path: C:\ishida\ScaleLink Pro 5\ScaleFirmware
- Note: Specify a path on a PC that the ScaleLink Pro 5 Lite installed.
- Buttons: OK, X

In most cases you can simply click **OK** to accept the default settings. If you need to make any changes, refer to on-line help for details.

3. When you have finished defining the scales, return to the **Welcome to ScaleLink Pro 5 Lite** window and click the **Close** button.
4. The main ScaleLink Pro 5 Lite application now starts.

Note: Using ScaleLink Pro 5 Lite with a Firewall

If you have a firewall installed on your PC, your firewall software may display popup windows when you first run ScaleLink Pro 5 Lite asking whether to allow ScaleLink Pro 5 Lite to have access to the network. Always permit access as otherwise ScaleLink Pro 5 Lite will be unable to communicate with the scales or with client PCs.

Once you have started ScaleLink Pro 5 Lite, select **Index** from the **Help** menu to open on-line help for a full explanation of how to use the software.